

 Logitech 罗技®

iS600

保护套+充电宝



Quick Start Guide  
入门指南



English. . . . .	4
简体中文 . . . . .	14
<b>www.logitech.com/support . . .</b>	<b>23</b>

# Compatibility

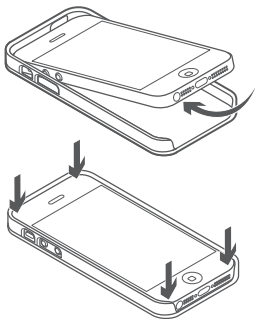
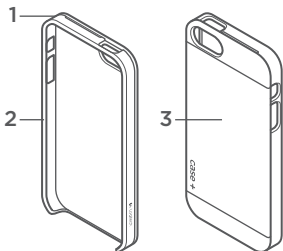
Case+Energy was designed and manufactured solely for the Apple iPhone. Please do not attempt to combine it with any other smartphone.

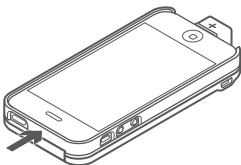
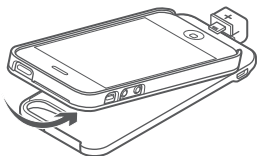
# Package Contents

1. Case+
2. +Energy battery pack
3. Micro USB to USB cable
4. Quick Start Guide
5. Important Information Document

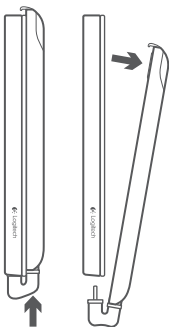


- 
1. Active Protection
  2. Raised bezel
  3. Metal back plate





Important: The Case+Energy comes charged and ready to go, but after the initial use, you will need to plug it in to charge. Charging should take about 3 hours for maximum power. You can charge it by itself or charge it attached to your phone. When coupled, the phone will charge first followed by the battery pack.



To remove the +Energy battery pack from your device, gently push the charging plug towards your phone until the top clip becomes loose. Then slide the +Energy battery pack off the bottom of the smartphone case.



- 
- The +Energy battery pack has 2300 mAh of power. That should more than double your iPhone battery life.
  - To recharge your +Energy, connect the micro USB cable to the side of your battery pack. The USB cable can be plugged in to your computer or any power source with a USB port. The LEDs located on the back of the device will show you the charge progress or completion.
  - When your iPhone and +Energy are coupled and on, your iPhone will always use the +Energy battery pack before depleting the iPhone battery.



## FAQ:

- **Will the metal in the case affect my antenna?**

In our testing, we found no degradation of signal strength (using the iOS signal test utility) with the case on vs off.

- **What do the LEDs mean?**

The LEDs on the back of your case can help you check the strength of your +Energy battery pack.

- **How many times can I charge my Case+Energy pack?**

The Case+Energy pack is rechargeable for over 500 full cycles. Partial cycles, like charging from 30% to 100% will not count as a full cycle until all of the partials equal 100%. A full cycle is from 0% to 100%. After 500 cycles, the battery could lose some of its energy capacity. This is standard with lithium batteries.

- **How do I turn the case on?**

You can turn the case on & off by holding the button down for 3 seconds. A short press for 1 second on the +Energy battery pack will allow you to check your power availability.

- **Can I charge other iOS devices with the Lightning connector?**  
No. The form fitting nature of the +Energy battery pack has been specifically designed to be attached to the iPhone.
- **Do I have full access to all my ports while using Case+Energy?**  
Yes. Logitech designed the case for full functionality, which includes easy access to your smartphone ports.

## **Go beyond with the Logitech Case+ system.**

Live life on the go with a style that's all yours—and give your smartphone the protection it deserves.

The Logitech Case+ system is a modular system that gives you what you want when you want it, including a free-mount system, kickstand, earbud wrap, and battery boost.

## Tips & Care:

- Please keep your Case+Energy battery pack away from moisture and corrosive materials.
- Do not wash the +Energy battery pack with chemicals, soaps, or detergents. Please wipe down the back of your +Energy battery pack with a soft, slightly dampened cloth. If you get dust in your plug, please gently blow the dust away with air or wipe gently with a soft, clean, dry cloth.
- There are small parts inside the +Energy battery pack, please don't let pets or children eat or swallow parts of the pack.
- Recharge your +Energy battery pack at least once every two months when not in heavy rotation or use. Charge it for at least one hour before you store it.
- Please use care and common sense when using this product. We accept no responsibility for dropped/broken phones.

## Warning:

- Do not store the +Energy battery pack in high temperature environments, including intense sunlight. Do not place battery in fire or other excessively hot environments.
- Be cautious of moisture getting into the +Energy battery pack or near open ports on your smartphone.
- Be cautious of excessive drops, bumps, abrasions, or other impacts to the +Energy battery pack. If there is damage to the +Energy battery pack, please discontinue use. Contact Logitech or dispose of it in an appropriate manner at your local battery-recycling center.
- Do not disassemble or modify the +Energy battery pack.
- Do not attempt to charge the +Energy battery pack with anything other than the micro USB to USB cable.
- If the Logitech +Energy battery pack is meant for a minor's use, the purchasing adult agrees to provide instructions and warnings prior to use. Failure to do so is the sole responsibility of the purchaser, who agrees to indemnify Logitech for any unintended use/misuse by a minor.

- All Logitech products have gone through a thorough quality assurance inspection. If the +Energy battery pack is excessively hot, emitting an odor, is deformed, cut, damaged, or demonstrating abnormal activity please stop use and contact us at [www.logitech.com/CaseEnergy](http://www.logitech.com/CaseEnergy)

Never dispose of batteries in the garbage. Disposal of batteries in the garbage is unlawful under state and federal environmental laws and regulations. Always take used batteries to your local battery-recycling center.

# 兼容性

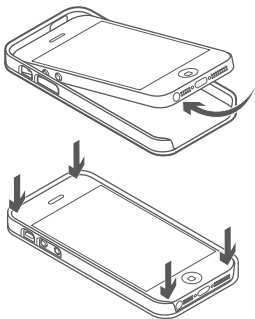
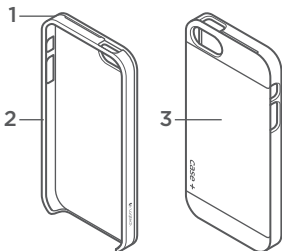
保护套+充电宝 专为 Apple iPhone 设计制造。请勿将其与任何其他智能手机配合使用。

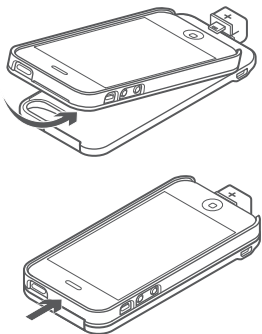
# 包装内容

1. 保护套+
2. 充电宝 电池组
3. 微型 USB 到 USB 的连接线
4. 入门指南
5. 重要信息文档



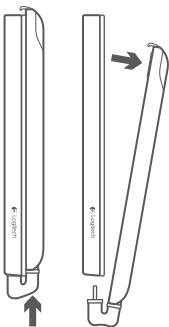
1. 主动保护
2. 提升的挡板
3. 金属材质背板





重要提示：保护套+充电宝 开箱即已充电，可随时使用，但在首次使用后需将其插入电源进行充电。为获得最大电量，充电应持续 3 小时左右。您可单独对其充电，也可连在手机上对其进行充电。两者同时充电时，手机会先于电池组进行充电。





要将充电宝电池组从设备取下，可朝手机方向轻推充电插头至顶部的夹子松动。然后将充电宝电池组从智能手机保护盒的底部滑出。



- 
- 充电宝 电池组的容量为 2300 mAh。这意味着可将 iPhone 电池的使用时间延长至两倍以上。
  - 要给 充电宝 充电，将微型 USB 连接线连接至电池组的侧面。将 USB 连接线插入电脑或任何带有 USB 端口的电源。设备背面的 LED 指示灯将显示充电进度以及是否已充电完成。
  - 在 iPhone 和 充电宝 结合在一起且同时开启的情况下，iPhone 总会在其电量耗尽之前通过 充电宝 电池组进行充电。

# 常见问题：

- **保护盒上的金属材料是否会影响我的天线？**

经过测试，我们发现无论手机与保护盒连接或是断开，信号强度均不会降低（使用 iOS 信号测试设备）。

- **LED 指示灯有哪些用处？**

保护盒背面的 LED 指示灯可帮助您检查充电宝 电池组的电量。

- **保护套+充电宝 电池组可充电多少次？**

保护套+充电宝 电池组可充电 500 个完整周期以上。部分周期（如从 30% 充至 100%）将不计为完整周期，除非所有的部分等于 100%。从 0% 至 100% 为一个完整周期。500 个周期后，电池的容量将会有所降低。这是锂电池的标准性能。

- **如何开启保护盒？**

按住按钮 3 秒钟可打开或关闭保护套。短暂按住充电宝电池组 1 秒钟可查看电量状况。

- **我能否通过高速接口为其他 iOS 设备充电？**

不能。高速接口的形状专门根据充电宝电池组的特征而设计，仅可用于搭配 iPhone 使用。

- **使用 保护套+充电宝 时，所有端口是否均处于可用状态？**

是的。罗技所设计的保护盒支持产品的全部功能，包括轻松使用智能手机端口。

## 了解关于罗技 保护套系统的更多信息。

乐享旅途，做回自己——让您心爱的智能手机享受应有呵护。罗技 保护套 模块化系统能在您需要时带来“及时雨”，其中包括自由安装系统、支架、耳塞包和电池升级。

## 提示与维护：

- 请勿将 保护套+充电宝 电池组置于潮湿环境中或与腐蚀性材料接触。
- 切勿用化学品、肥皂或清洁剂清洗充电宝 电池组。请用微湿的软布对充电宝 电池组的背面进行擦拭。如果插头沾上灰尘，请将其轻轻吹走，或用洁净柔软的干布轻轻擦除。
- 充电宝 电池组中存在微小部件，切勿让宠物或儿童吞食或吞咽这些微小部件。
- 在不经常使用的情况下，应至少每两个月为 充电宝 电池组充电一次。储存前，至少为其充电 1 小时。
- 使用本产品时，请使用护理常识。我们对于手机跌落/损害不承担任何责任。

## 警告：

- 切勿将充电宝储存于高温环境中(包括强烈的阳光下)。切勿将电池置于火或其他过热的环境中。
- 谨防充电宝电池组内部或智能手机的开放端口附近受潮。
- 避免充电宝电池组严重跌落、碰撞、摩擦或遭受其他冲击。如充电宝电池组受损，请停止使用。请联系罗技或通过当地的电池回收中心对电池进行妥善处理。
- 切勿拆卸或改装充电宝电池组。
- 切勿尝试通过微型 USB 到 USB 的连接线以外的线缆为充电宝电池组充电。
- 如罗技充电宝电池组的使用者为未成年人，则成人购买者同意在其使用前向未成年人提供指导并给予警告。购买者应对未履行此职责承担单方责任，并同意罗技免受因未成年人无意识/不当使用而导致的任何赔偿。
- 所有罗技产品均已通过完整的质量保证检查。如果充电宝电池组出现过热、散发气味、变形、切口、受损或任何异常情况，请通过以下网址联系我们：  
[www.logitech.com/CaseEnergy](http://www.logitech.com/CaseEnergy)

切勿将电池作为垃圾丢弃。根据州及联邦与环境相关的法律法规，将电池作为垃圾丢弃属违法行为。务必将废旧电池送至当地的电池回收中心进行处理。

Table of Toxic and Hazardous Substances/Elements and their Content

产品中有毒有害物质或元素的名称及含量  
根据中国<<电子信息产品污染控制管理办法>>

手持通讯设备配件 Mobile Accessory						
有毒有害物质或元素 Toxic or Hazardous Substances and Elements						
部件名称 Parts Name	铅 (Pb)	汞 (Hg)	镉 (Cd)	六价铬 (Cr(VI))	多溴联苯 (PPB)	多溴二苯醚 (PBDE)
电缆线/电源 Cable/Adaptor	X	0	0	0	0	0
电路板组件 PWAs	X	0	0	0	0	0
塑料外壳 Plastic enclosure	0	0	0	0	0	0
塑料部件 Plastic parts	0	0	0	0	0	0
金属部件 Metal parts	X	0	0	0	0	0
橡胶部件 Rubber parts	0	0	0	0	0	0

0 = 表示该有害物质在该部件所有均质材料中的含量均在SJ/T 11363-2006标准规定下。  
X = 表示该有害物质至少在该部件的某一均质材料中的含量超出SJ/T 11363-2006标准。  
表中标有“X”的所有部件均符合欧盟RoHS Recast法规- 2011/65/EU  
指令。此表显示“罗技科技有限公司”的电子信息产品部件中何处存在这些有毒有害物质。该产品都包含上述所有部件。  
注：环保使用期限的参考标准。取决于产品正常工作的温度和湿度等条件。





[www.logitech.com](http://www.logitech.com)

“Made for iPhone” means that an electronic accessory has been designed to connect specifically to iPhone, and has been certified by the developer to meet Apple performance standards. Apple is not responsible for the operation of this device or its compliance with safety and regulatory standards. Please note that the use of this accessory with iPhone may affect wireless performance.

“适用于 iPhone”表示电子附件为连接到 iPhone 而专门设计，并已由开发商认证能够满足 Apple 的性能标准。Apple 不对此类设备操作或其安全和法规标准合规性承担责任。请注意与 iPhone 配合使用此附件可能会影响无线性能。

© 2013 Logitech. All rights reserved. Logitech, the Logitech logo, and other Logitech marks are owned by Logitech and may be registered. iPhone is a trademark of Apple Inc., registered in the U.S. and other countries. All other trademarks are the property of their respective owners. Logitech assumes no responsibility for any errors that may appear in this manual. Information contained herein is subject to change without notice.

版权所有 © 2013 年罗技。罗技、罗技标志、Logitech 和其他罗技商标均归罗技所有，并或已注册。iPhone 是 Apple Inc. 在美国和其他国家注册的商标。所有其他商标均是其各自所有者的财产。罗技对于本手册中可能出现的任何错误不承担任何责任。本手册中包含的信息如有更改，恕不事先通知。

620-005586.005