

LOGITECH CRAYON

Setup Guide for Schools

学校设置指南



logitech 罗技®

CONTENTS / 目录

English3

简体中文5

Crayon Setup Guide for Schools

PRODUCT SETUP

To start using Logitech Crayon, simply turn on and draw. No software downloads or pairing required. Here are some tips to get started:

1. Make sure you are using iPad Pro 12.9-inch (3rd gen), iPad Pro 11-inch, iPad Air (3rd gen), iPad mini (5th gen), or iPad (6th gen). These are the only devices that are compatible with Logitech Crayon.
2. Make sure iPad is updated to iOS 12.2 or above. To check your iOS version, go to iPad Settings → General → Software.
3. Disconnect any previously connected digital pencils, such as Apple Pencil®, prior to using Crayon by going to iPad Settings → Bluetooth → Select the device you want to disconnect. If you do not want to forget other digital pencils, simply turn your *Bluetooth*® off before using Crayon.
4. Press the power button for 1 second. If the LED turns green, you're ready to go. If LED turns red, charge Crayon before use.

SOFTWARE UPDATES

Updating the iOS on your iPad may affect your experience with Crayon. If you notice changes in functionality, simply follow these steps:

1. Download Logitech Crayon software update at <https://support.logitech.com/product/crayon/downloads>
2. Connect Logitech Crayon to laptop via lightning cable.
3. Follow the prompts to update software.

There is no limit to how many Crayons you can connect at one time. The firmware update app can update 8 devices at a time. Every update takes about 2 minutes. To get notifications about software updates, product tips, and more, visit <https://support.logitech.com/product/crayon/register>

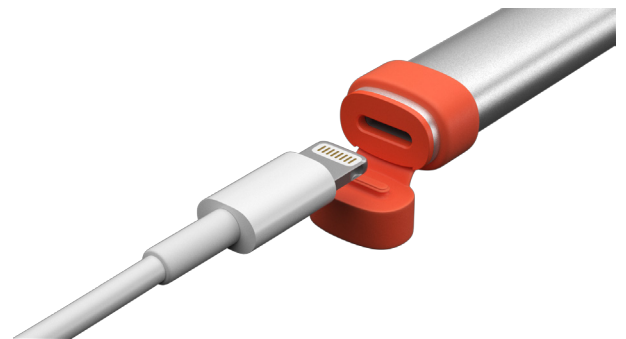
USE

- Use with hundreds of Apple Pencil compatible apps, which are downloadable in the App Store.
- Logitech Crayon is not pressure sensitive, so there is no need to press down hard on the iPad.
- Do not remove, chew, or rip off Crayon parts, such as cap or tip. Damaging Crayon in this manner will void the warranty.

HOW TO CHARGE

1. Flip open the cap.
2. Insert lightning cable.
3. Connect cable to a power adapter or computer to charge.
It takes about 30 minutes to charge Crayon from 0 to 100%.

Note: Crayon will not work while charging.

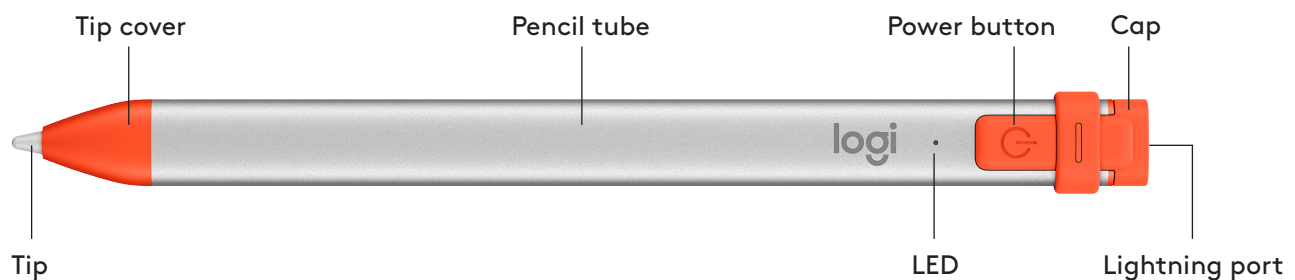


LED behavior	Logitech Crayon status
Fade in green	Power on
Fade out green	Power off
Solid green	Fully charged
Breathing green	Charging
Blinking red	Battery level is critical (less than 5%)
Red when user presses button	Battery level is low (less than 10%)
Green when user presses button	Battery level is good
Yellow	Firmware update

CHARGING TIPS

- Crayon may not come with a 100% charged battery, so plan to have additional charging ports, cables or a charging hub available to fully charge Crayon prior to deployment. A fully-charged Crayon will not lose significant battery life if Crayon is not used immediately (e.g. put in storage for a few months.).
- It's helpful to keep at least one lightning cable on hand in the classroom if students forget to charge their Crayon at home.

KNOW YOUR PRODUCT



REPLACEABLE PARTS FOR SCHOOLS

The tip can be damaged if Logitech Crayon is dropped and will also wear down with use. If either of these occur, the tip will need to be replaced to avoid damaging the screen. Replaceable tips, tip covers, and caps can be purchased at <https://support.logitech.com/product/crayon/spare-parts>

CARE AND STORAGE TIPS FOR SCHOOLS

- To preserve battery, power Crayon off when you are done using it. If you forget, Crayon will automatically shut off after 30 minutes of being idle.
- If using a keyboard case, do not carry Crayon between the iPad screen and keyboard cover, as the screen may crack.
- When carrying Crayon around, slide it into a pencil holder of an iPad case or in a pocket of a backpack where it won't get crushed.
- Though Crayon is designed with 4-foot drop protection, avoid drops as this might damage the tip of your Crayon or the electronics inside.
- Do not leave the cap open as dirt, dust, and other foreign objects can get inside the charging port.
- If you need to clean Crayon, spray a cloth with water or a gentle cleaner (less than 15% alcohol) until it's damp (not soaked), and wipe the surface of the Crayon. Avoid getting moisture in the charging port, and make sure Crayon is completely dry before storing.
- The empty Crayon boxes may be useful for storage of Crayons when not in use.
- Keep Crayons in a dry place, as they are not waterproof and can be damaged by moisture.

Crayon 学校设置指南

产品设置

要开始使用罗技 Crayon，只需打开开关，即可开始绘制。无需下载软件或进行配对。产品入门提示：

1. 请确保您使用的是 12.9 英寸 iPad Pro (第三代)、11 英寸 iPad Pro、iPad Air (第三代)、Pad mini (第五代) 或 iPad (第六代)。罗技 Crayon 仅支持这些设备。
2. 请确保 iPad 已更新至 iOS 12.2 或更高版本。查看 iOS 版本，请前往 iPad 设置 → 通用 → 软件。
3. 使用 Crayon 前，请断开早前连接的任何数字笔，如 Apple Pencil®。请前往 iPad 设置 → 蓝牙 → 选择想要断开连接的设备。如果不想忽略其他数字笔，只需在使用 Crayon 前关闭蓝牙™。
4. 按下电源按钮 1 秒钟。LED 变为绿色时即可开始使用。如果 LED 变为红色，请在使用前为 Crayon 充电。

软件更新

更新 iPad 的 iOS 可能会影响 Crayon 的使用体验。如果发现功能出现变化，只需按以下步骤操作：

1. 下载罗技 Crayon 软件更新请访问 <https://support.logitech.com/product/crayon/downloads>
2. 通过闪电线缆将罗技 Crayon 连接至笔记本电脑。
3. 按提示操作更新软件。

对同时连接的 Crayon 数量并无限制。固件更新应用程序可同时为 8 个设备进行更新。每次更新大约需要 2 分钟。要获得软件更新、产品使用技巧及更多其他信息通知，请访问 <https://support.logitech.com/product/crayon/register>

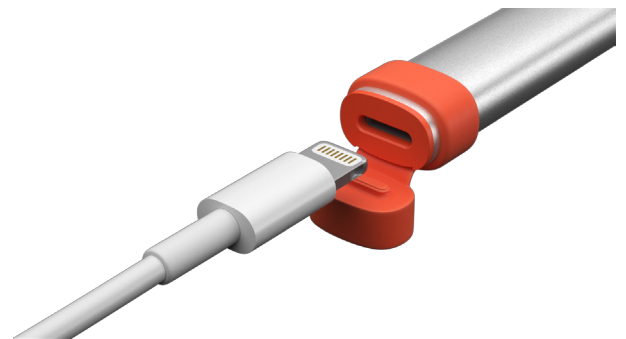
使用

- 支持数百款兼容 Apple Pencil 的应用程序，可在 App Store 下载。
- 罗技 Crayon 并不支持压感，所以无需用力按压 iPad 屏幕。
- 请勿移除、咀嚼或撕扯 Crayon 部件，如顶盖或笔尖。以此类方式对 Crayon 造成的损坏将使保修失效。

如何充电

1. 翻开顶盖。
2. 插入闪电线缆。
3. 连接线缆至电源适配器或电脑，开始充电。
大约需要 30 分钟将 Crayon 电量从 0 充至 100%。

请注意：充电时 Crayon 无法工作。



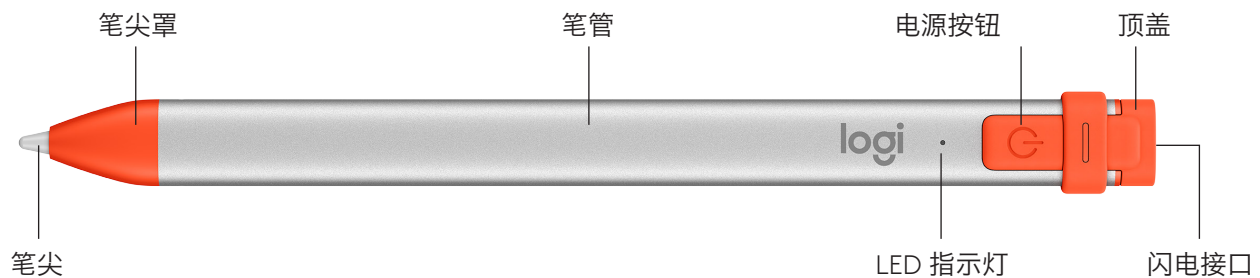
LED 状态	罗技 Crayon 状态
绿色渐亮	电源开启
绿色渐暗	电源关闭
绿色常亮	电量满
绿色呼吸灯	正在充电
红色闪烁	电量过低 (少于 5%)
按下按钮时亮起红色	电量低 (少于 10%)
按下按钮时亮起绿色	电量良好
黄色	固件更新

充电提示

Crayon 出厂时可能不是 100% 电量, 因此在部署前应安排好额外的充电端口、线缆或充电集线器以对 Crayon 进行完全充电。完全充电后的 Crayon 即便未立即投入使用 (如储存数月), 也不会流失过多电量。

建议在教室保留至少一根闪电线缆, 以免学生忘记在家给 Crayon 充电。

了解您的产品



学校用可更换部件

罗技 Crayon 掉落时可能损伤笔尖, 正常使用时也会磨损笔尖。如果出现以上情况, 建议更换笔尖, 以免损伤屏幕。购买替换笔尖、笔尖罩和顶盖请访问 <https://support.logitech.com/product/crayon/spare-parts>

学校的维护与储存提示

- 为节省电量, 使用后应关闭 Crayon 电源。如果忘记关闭电源, Crayon 会在闲置 30 分钟后自动关闭。
- 如果使用键盘保护套, 请勿在 iPad 屏幕和键盘保护套之间夹放 Crayon, 以免造成屏幕破裂。
- 随身携带 Crayon 时, 可将其装入 iPad 保护套的笔套或背包口袋中, 以避免挤压。
- 虽然 Crayon 设计具有 4 英尺跌落保护性能, 但应尽量避免跌落, 因为这可能会损坏 Crayon 笔尖或者内部电子设备。
- 不使用端口时请盖好顶盖, 避免灰尘或其他异物进入充电端口。
- 如需清洁 Crayon, 可用水或温和清洁剂 (酒精浓度低于 15%) 沾湿布面 (请勿浸透), 然后擦拭 Crayon 表面。请避免充电端口受潮, 并确保储存之前 Crayon 保持完全干燥。
- 空的 Crayon 包装盒可用来储存暂时不使用的 Crayon。
- 请在干燥空间储存 Crayon, 因为它们不防水, 可能被潮湿损坏。