

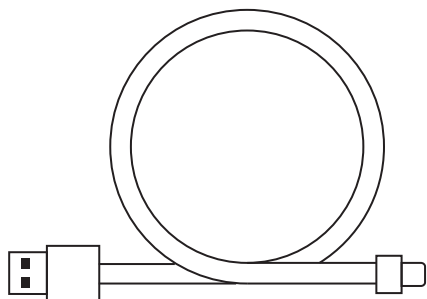
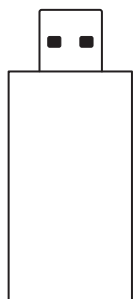
# G535

Wireless Gaming Headset

**SETUP GUIDE**



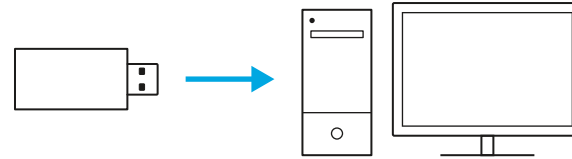
logitech 



English . . . . .	3	Česká verze. . . . .	63
Deutsch . . . . .	7	Slovenčina . . . . .	67
Français . . . . .	11	Українська . . . . .	71
Italiano . . . . .	15	Eesti . . . . .	75
Español. . . . .	19	Latviski . . . . .	79
Português . . . . .	23	Lietuvių. . . . .	83
Nederlands. . . . .	27	Български. . . . .	87
Svenska. . . . .	31	Hrvatski . . . . .	91
Dansk . . . . .	35	Srpski. . . . .	95
Norsk . . . . .	39	Slovenščina. . . . .	99
Suomi. . . . .	43	Română . . . . .	103
Ελληνικά. . . . .	47	Türkçe . . . . .	107
По-русски . . . . .	51	111 . . . . . العربية	
Po polsku . . . . .	55	115 . . . . . עברית	
Magyar . . . . .	59		

# SETUP INSTRUCTIONS

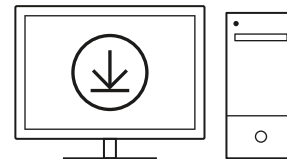
- Insert receiver into the USB port of your PC.



- Short press to turn ON.

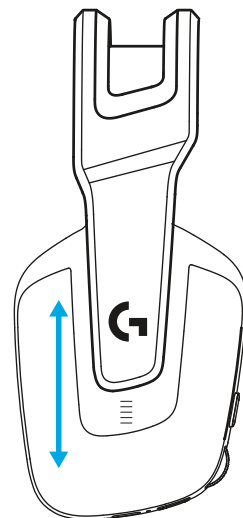


- (Optional) Download Logitech G HUB software to access advanced features. Download at [logitechG.com/ghub](https://logitechG.com/ghub)

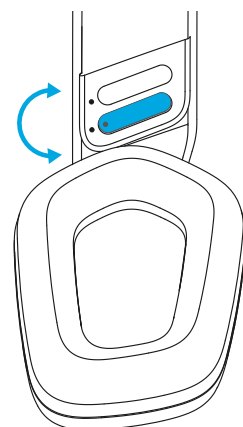


[logitechG.com/ghub](https://logitechG.com/ghub)

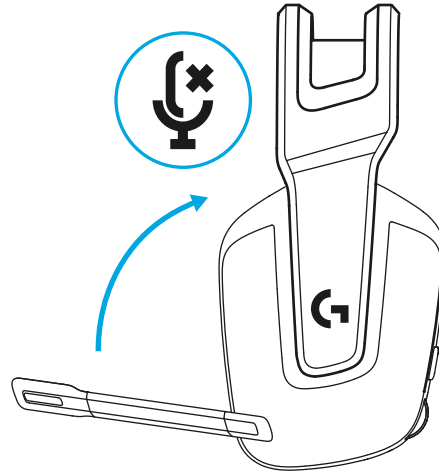
- The earcups can be adjusted up and down.



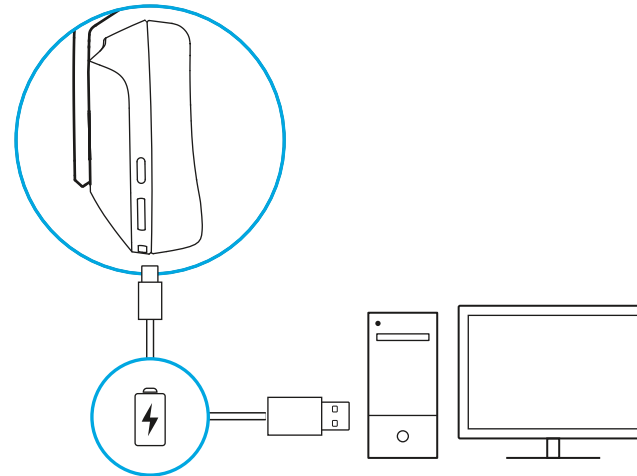
- The length of the headband can be adjusted.



- Flip boom up to mute.

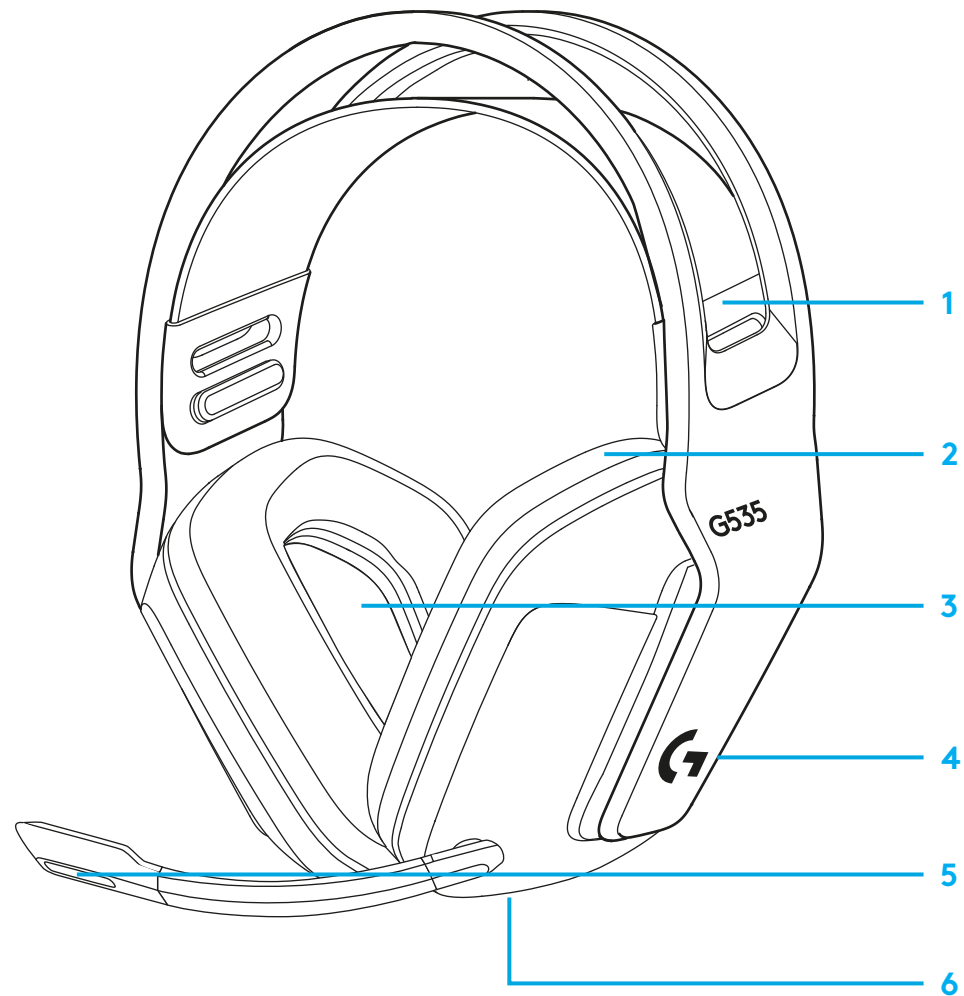


- Charge Headset when low on battery.



## FEATURES

- 1 Adjustable, reversible suspension band
- 2 Memory foam earpads
- 3 40 mm drivers
- 4 On-ear volume control
- 5 Flip-to-mute 6-mm mic
- 6 USB-C charging port

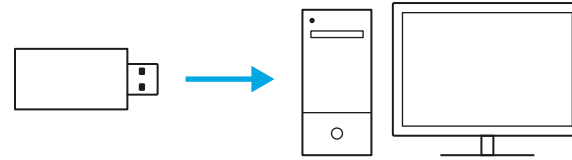


## FREQUENTLY ASKED QUESTIONS

[www.logitechG.com/support/G535](http://www.logitechG.com/support/G535)

# INSTALLATIONSANVISNINGAR

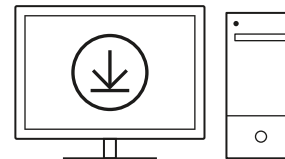
- Sätt in mottagaren i USB-porten på datorn.



- Kort tryck för att slå PÅ.

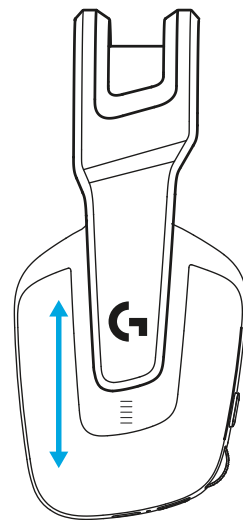


- (Valfritt) Ladda ner Logitech G HUB-programvaran för åtkomst till avancerade funktioner. Ladda ner på [logitechG.com/g hub](https://logitechG.com/g hub)

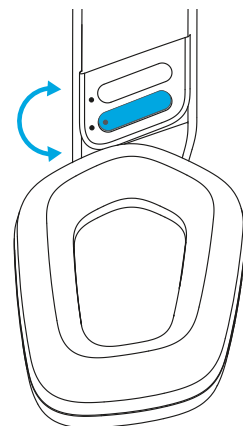


[logitechG.com/g hub](https://logitechG.com/g hub)

- Öronkuddarna kan justeras upp och ner.

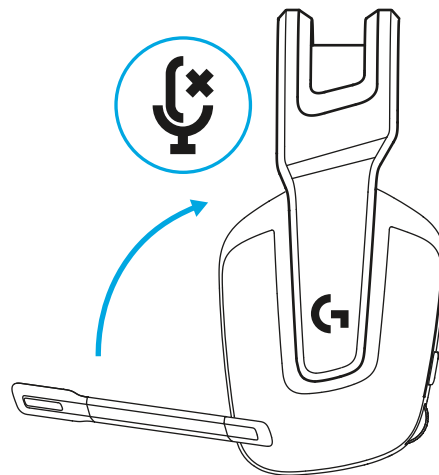


- Längden på bygeln kan justeras.

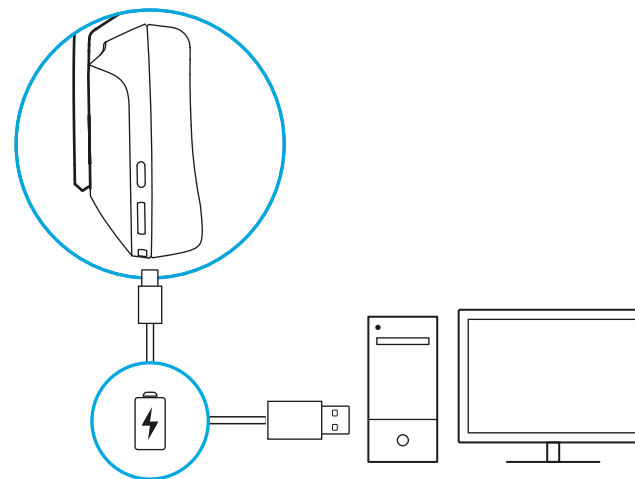




- Vrid upp mikrofonarmen för att stänga av mikrofonljudet.

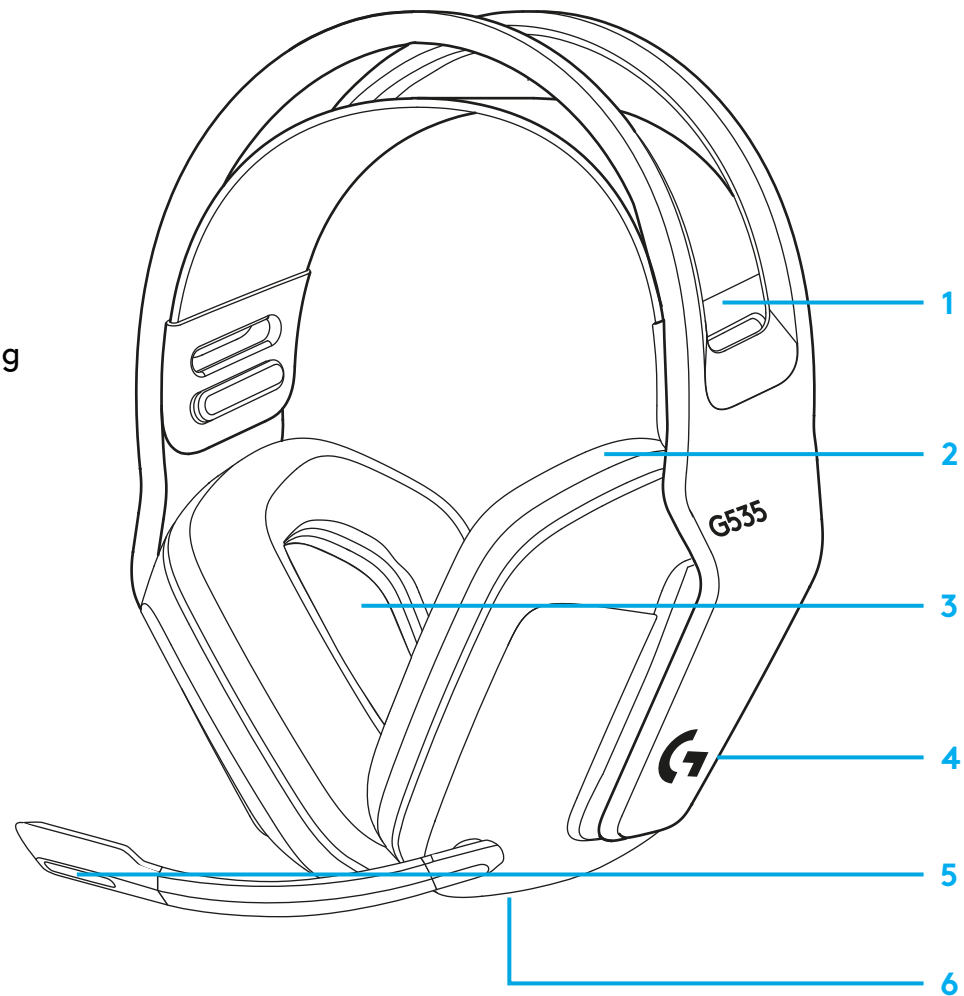


- Ladda headsetet när batterinivån är låg.



# FUNKTIONER

- 1 Justerbart, vändbart bygelband
- 2 Öronkuddar i minnesskum
- 3 40 mm högtalarelement
- 4 Volymreglering på öronkudden
- 5 6 mm mikrofon som vrids upp för tillfällig avstängning
- 6 USB-C-laddningsport

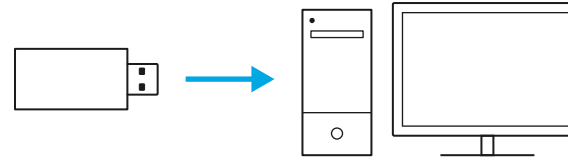


## VANLIGA FRÅGOR

[www.logitechG.com/support/G535](http://www.logitechG.com/support/G535)

# INSTALLATION

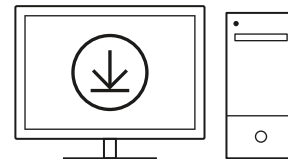
- Schließen Sie den Empfänger am USB-Anschluss des PC an.



- Kurz drücken zum Einschalten.

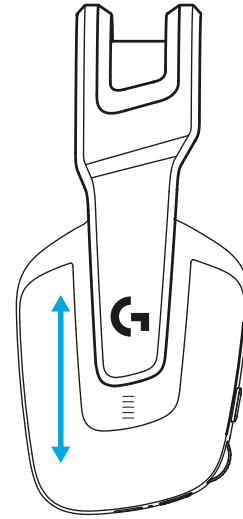


- (Optional) Für erweiterte Funktionen die Logitech G HUB Software herunterladen. Download unter [logitechG.com/ghub](https://logitechG.com/ghub)

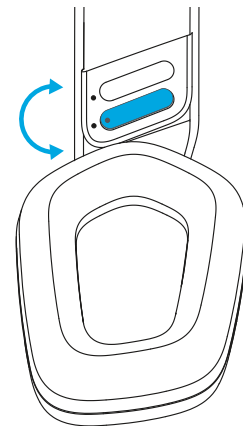


[logitechG.com/ghub](https://logitechG.com/ghub)

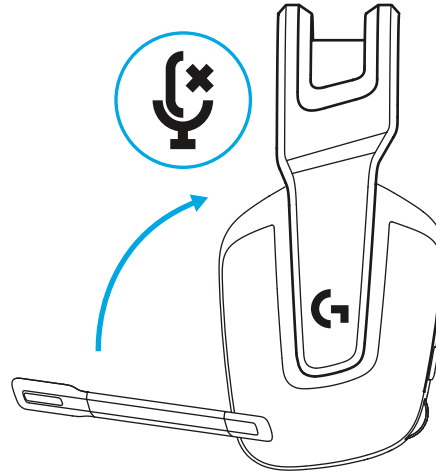
- Die Hörmuscheln können nach oben oder unten versetzt werden.



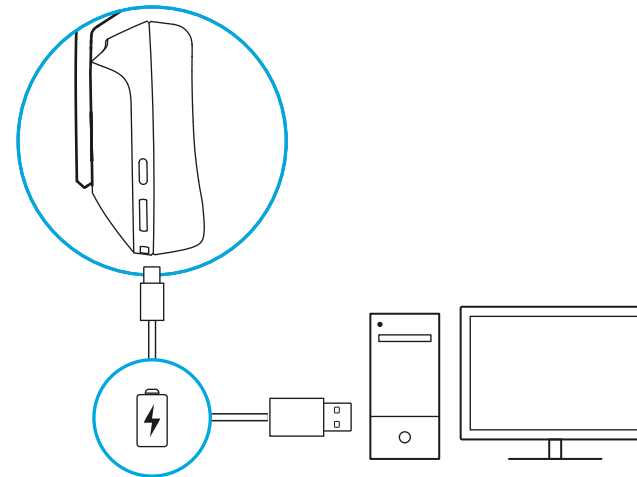
- Die Länge des Kopfbügels kann verstellt werden.



- Zum Stummschalten Mikrofonbügel nach oben drehen.

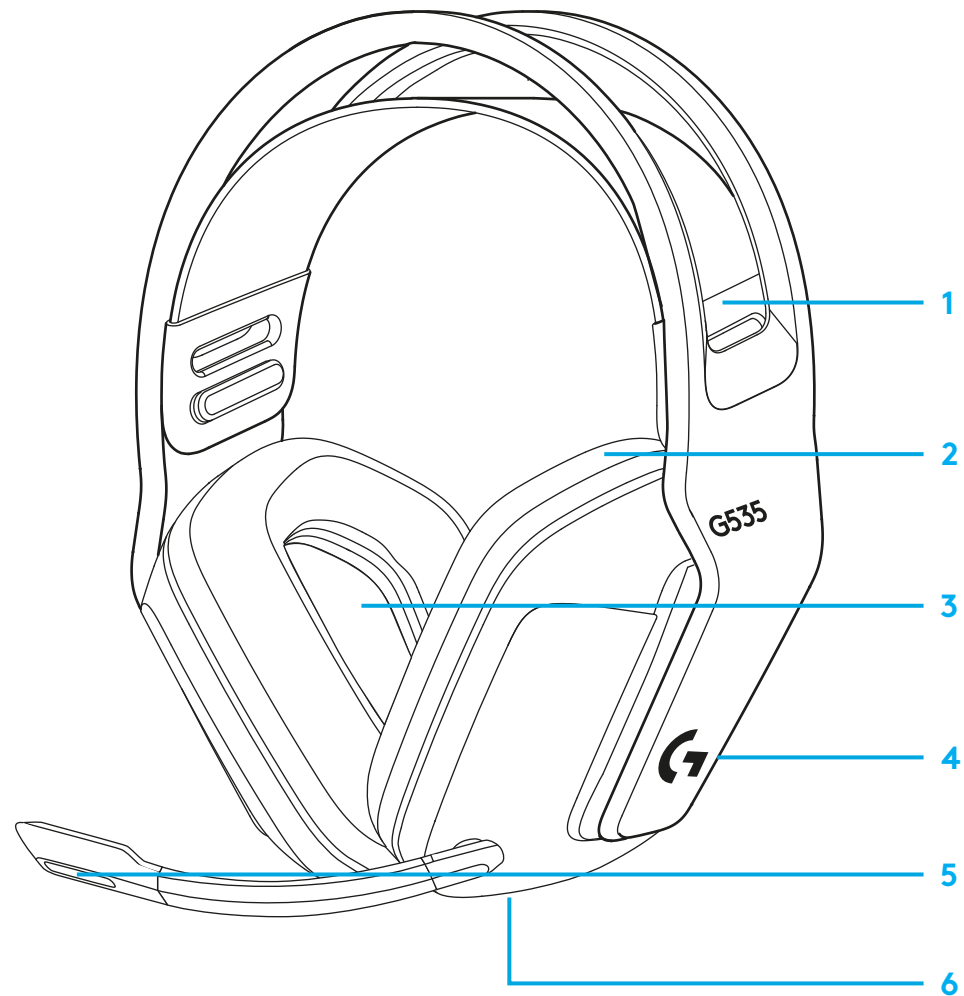


- Headset bei niedrigem Akkustand aufladen.



# PRODUKTEIGENSCHAFTEN

- 1 Verstellbares Wende-Aufhängungsband
- 2 Ohrpolster aus Memory Foam
- 3 40-mm-Lautsprecher
- 4 Lautstärkeregler an der Ohrmuschel
- 5 6-mm-Mikrofon mit Flip-Stummschalter
- 6 USB-C-Ladeanschluss

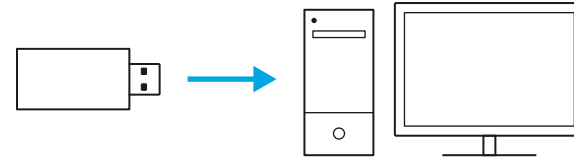


## HÄUFIG GESTELLTE FRAGEN (FAQ)

[www.logitechG.com/support/G535](http://www.logitechG.com/support/G535)

# INSTRUCTIONS D'INSTALLATION

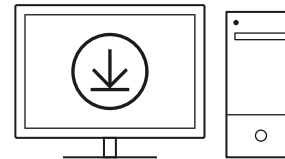
- Insérez le récepteur dans le port USB de votre PC.



- Appuyez brièvement pour mettre le casque sous tension.

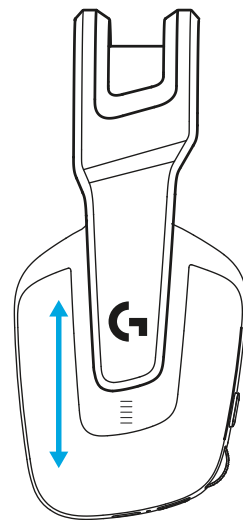


- (Facultatif) Téléchargez le logiciel Logitech G HUB pour accéder à des fonctionnalités avancées. Téléchargez-le sur [logitechG.com/ghub](https://logitechG.com/ghub)

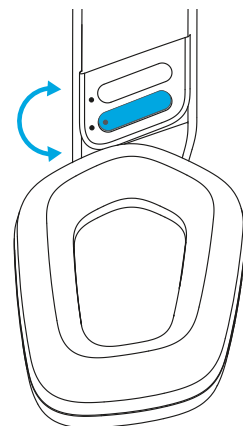


[logitechG.com/ghub](https://logitechG.com/ghub)

- Les oreillettes peuvent être ajustées de haut en bas.

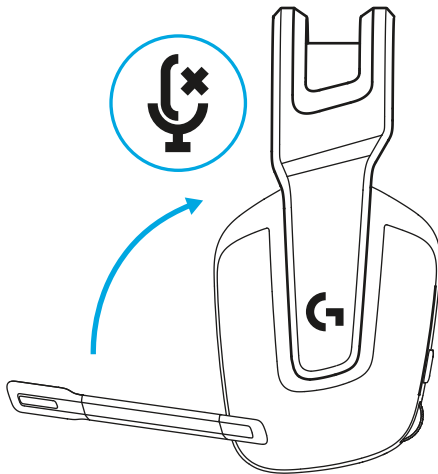


- La longueur du bandeau peut être ajustée.

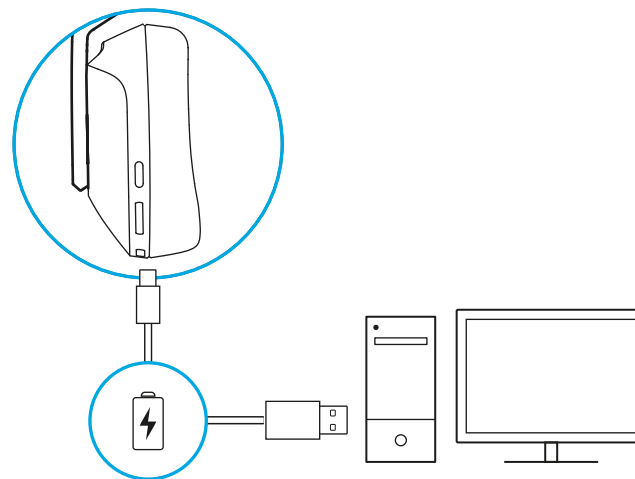




- Déplacez la tige du micro vers le haut pour mettre en sourdine.

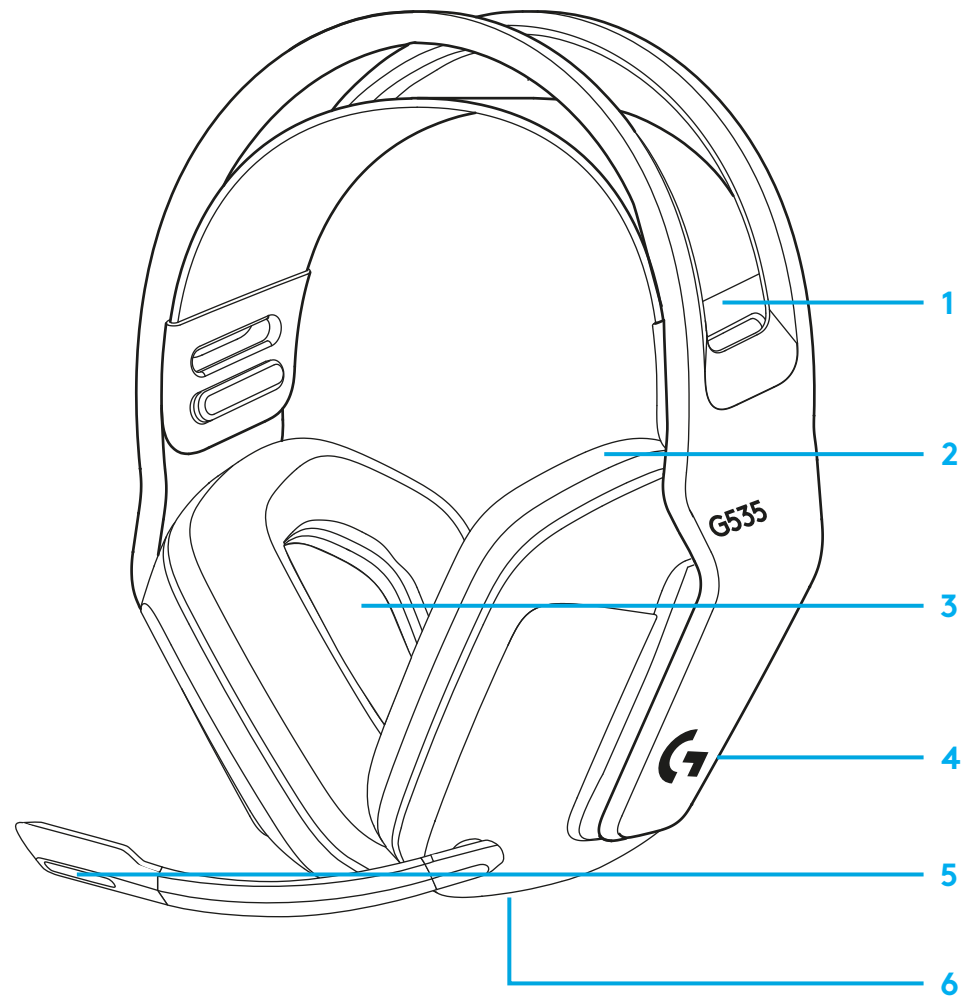


- Chargez le casque lorsque la batterie est faible.



# CARACTÉRISTIQUES

- 1 Bandeau de suspension réglable et réversible
- 2 Oreillettes à mémoire de forme
- 3 Transducteurs 40 mm
- 4 Contrôle du volume sur l'oreillette
- 5 Micro 6 mm avec fonction sourdine flip-up
- 6 Port de charge USB-C

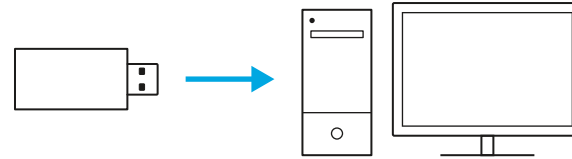


## QUESTIONS FRÉQUENTES

[www.logitechG.com/support/G535](http://www.logitechG.com/support/G535)

# ISTRUZIONI PER L'INSTALLAZIONE

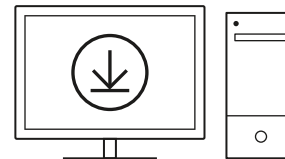
- Inserisci il ricevitore nella porta USB del tuo PC.



- Esercita una pressione breve per accendere.

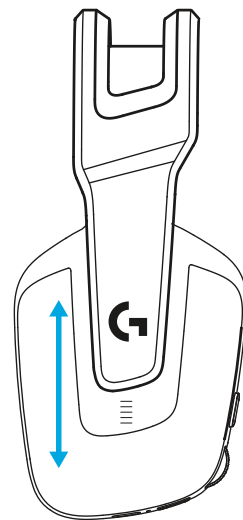


- (Opzionale) Scarica il software Logitech G HUB per accedere alle funzioni avanzate. Scaricalo all'indirizzo [logitechG.com/ghub](https://logitechG.com/ghub)

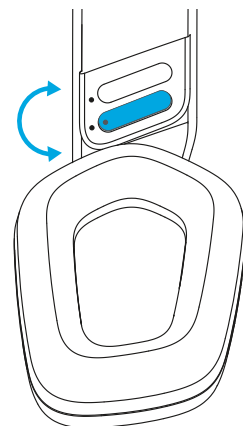


[logitechG.com/ghub](https://logitechG.com/ghub)

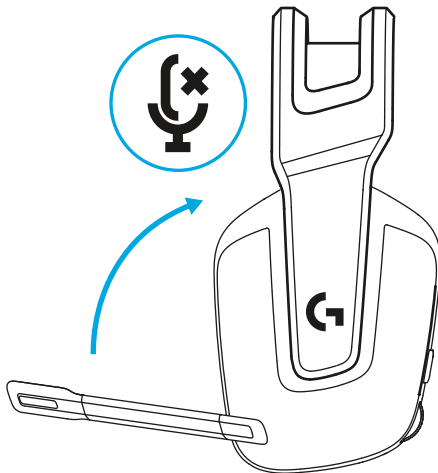
- È possibile regolare i copriorecchie spostandoli verso l'alto o verso il basso.



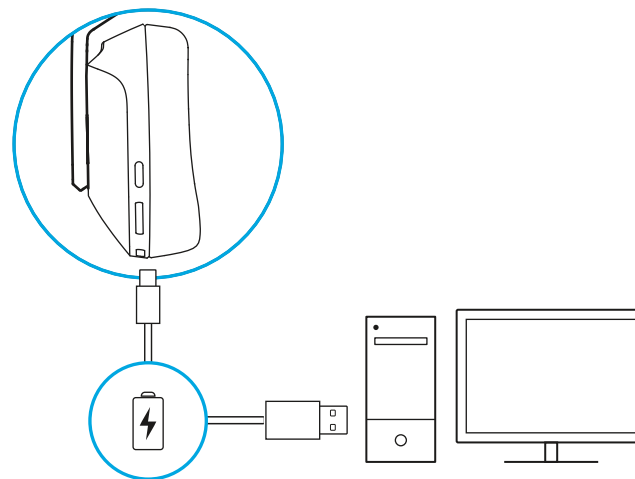
- La lunghezza della fascia per la testa può essere regolata.



- Sposta il braccio del microfono verso l'alto per disattivare l'audio.

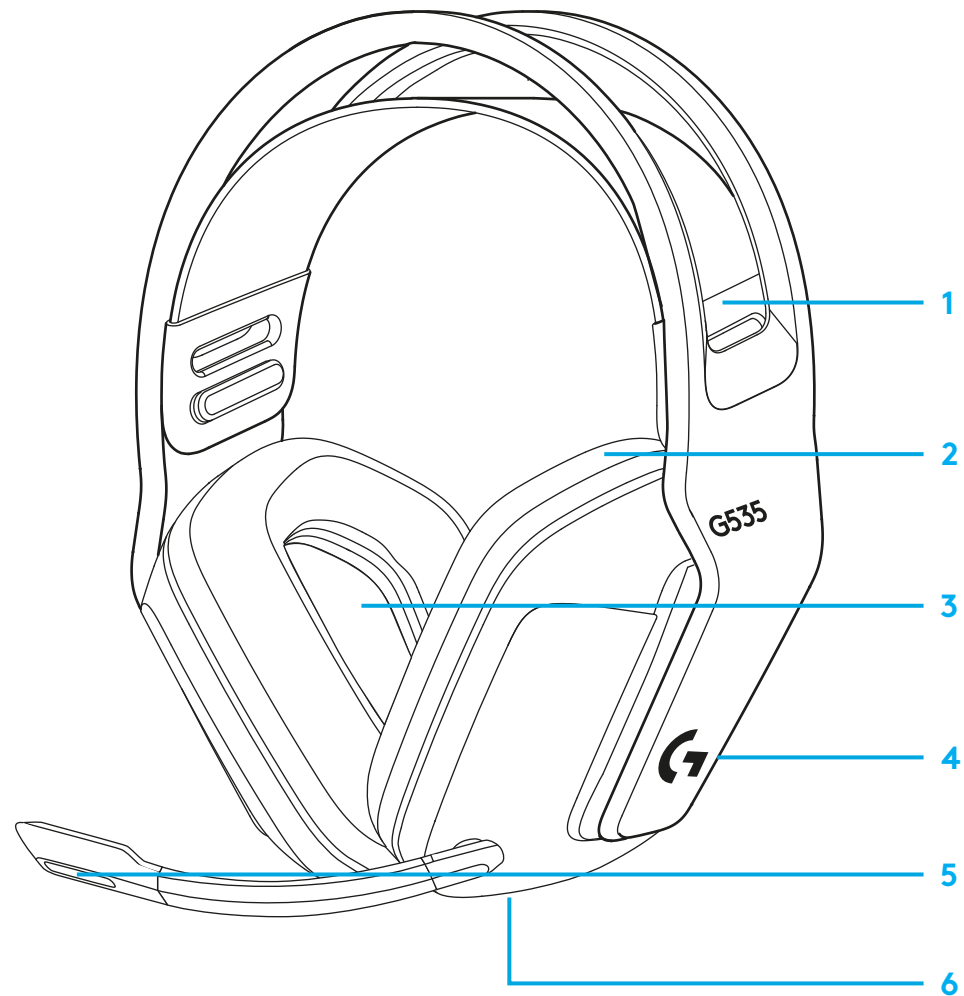


- Carica la cuffia con microfono quando la batteria è esaurita.



## CARATTERISTICHE

- 1 Fascia di sospensione regolabile e reversibile
- 2 Imbottiture in memory foam
- 3 Driver da 40 mm
- 4 Controllo bassi/volume sull'orecchio
- 5 Microfono flip-to-mute da 6 mm
- 6 Porta di ricarica USB-C

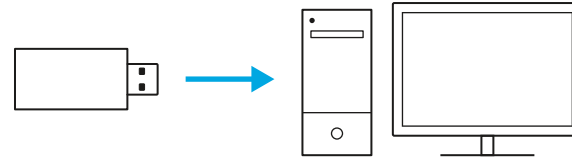


## DOMANDE FREQUENTI

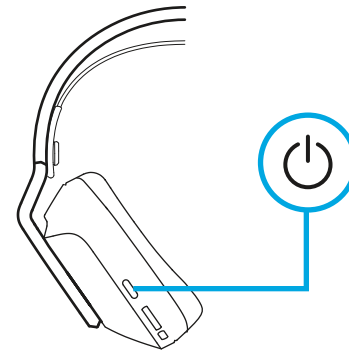
[www.logitechG.com/support/G535](http://www.logitechG.com/support/G535)

# INSTRUCCIONES DE INSTALACIÓN

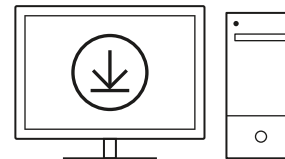
- Inserta el receptor en el puerto USB del PC.



- Pulsa brevemente para encender los auriculares.

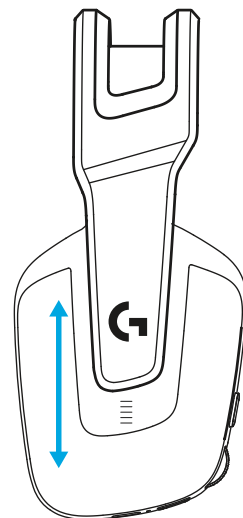


- (Opcional) Descarga el software Logitech G HUB para acceder a las funciones avanzadas. Descargable desde [logitechG.com/ghub](https://logitechG.com/ghub)

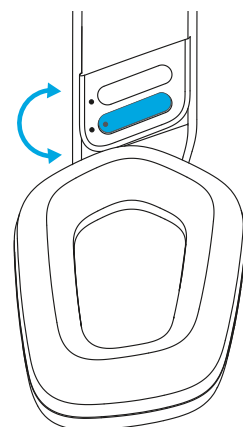


[logitechG.com/ghub](https://logitechG.com/ghub)

- Las copas de los auriculares se pueden subir y bajar.

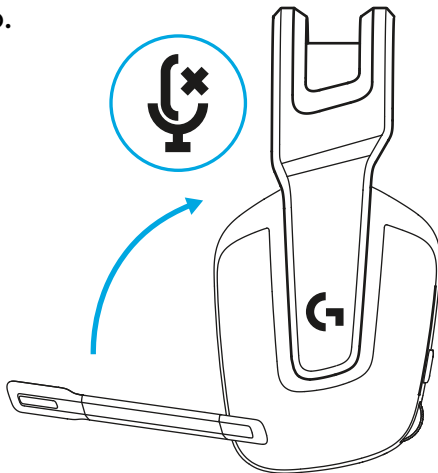


- La longitud de la diadema también es ajustable.

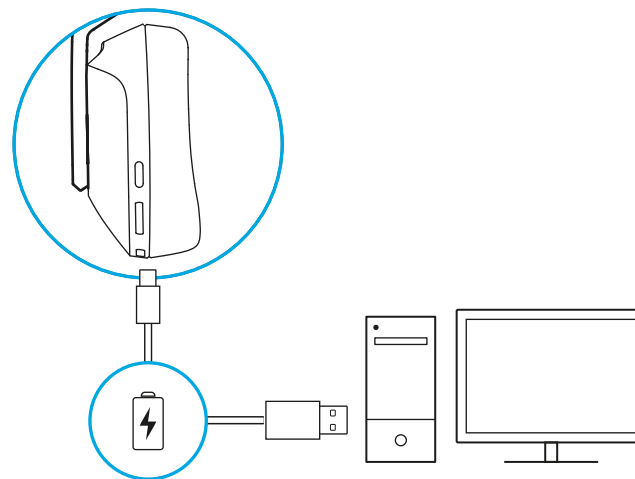




- Gira hacia arriba la varilla del micrófono para silenciarlo.

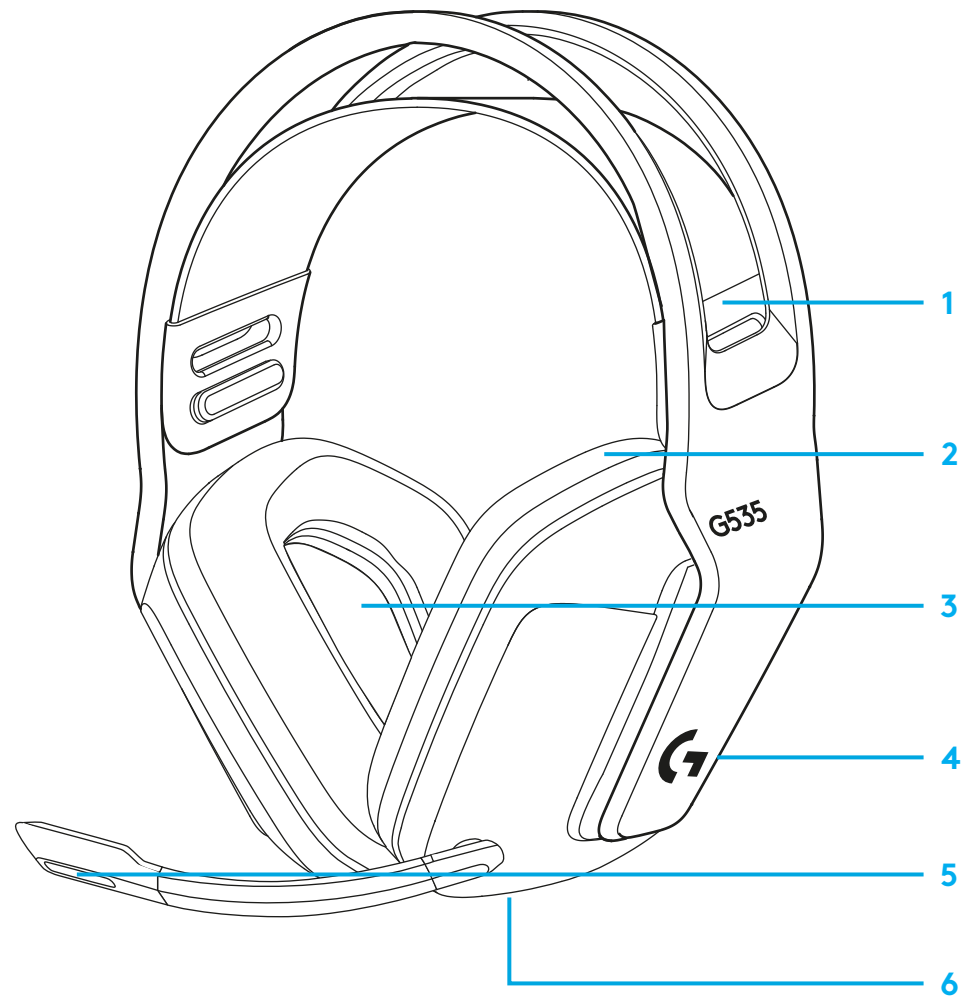


- Carga los auriculares cuando quede poca batería.



# CARACTERÍSTICAS

- 1 Banda de suspensión ajustable y reversible
- 2 Almohadillas de espuma viscoelástica
- 3 Transductores de 40 mm
- 4 Control de volumen en el auricular
- 5 Micrófono volteable para silenciar de 6 mm
- 6 Puerto de carga USB-C

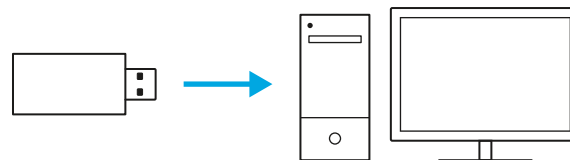


## PREGUNTAS MÁS FRECUENTES

[www.logitechG.com/support/G535](http://www.logitechG.com/support/G535)

# INSTRUÇÕES DE INSTALAÇÃO

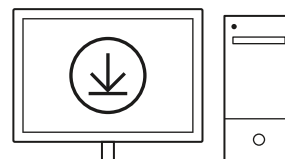
- Introduza o receptor na porta USB do computador.



- Prima brevemente para ligar.

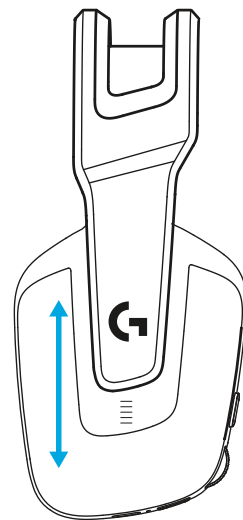


- (Opcional) Transfira o software Logitech G HUB para aceder a funcionalidades avançadas. Transfira-o em [logitechG.com/ghub](https://logitechG.com/ghub)

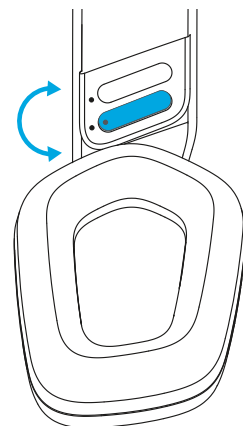


[logitechG.com/ghub](https://logitechG.com/ghub)

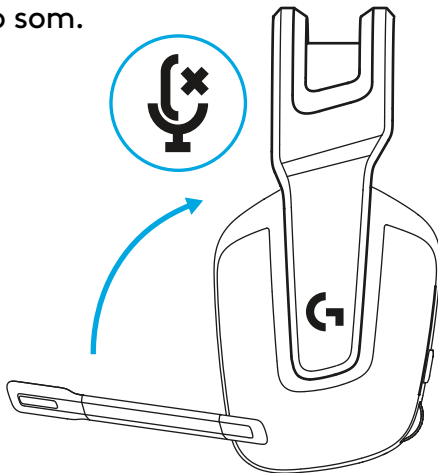
- Pode ajustar os auriculares para cima e para baixo.



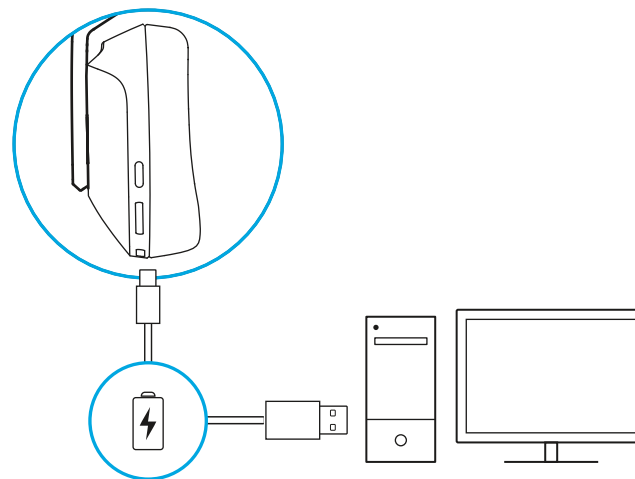
- Pode ajustar o tamanho da alça de cabeça.



- Mova a haste do microfone para cima para desactivar o som.

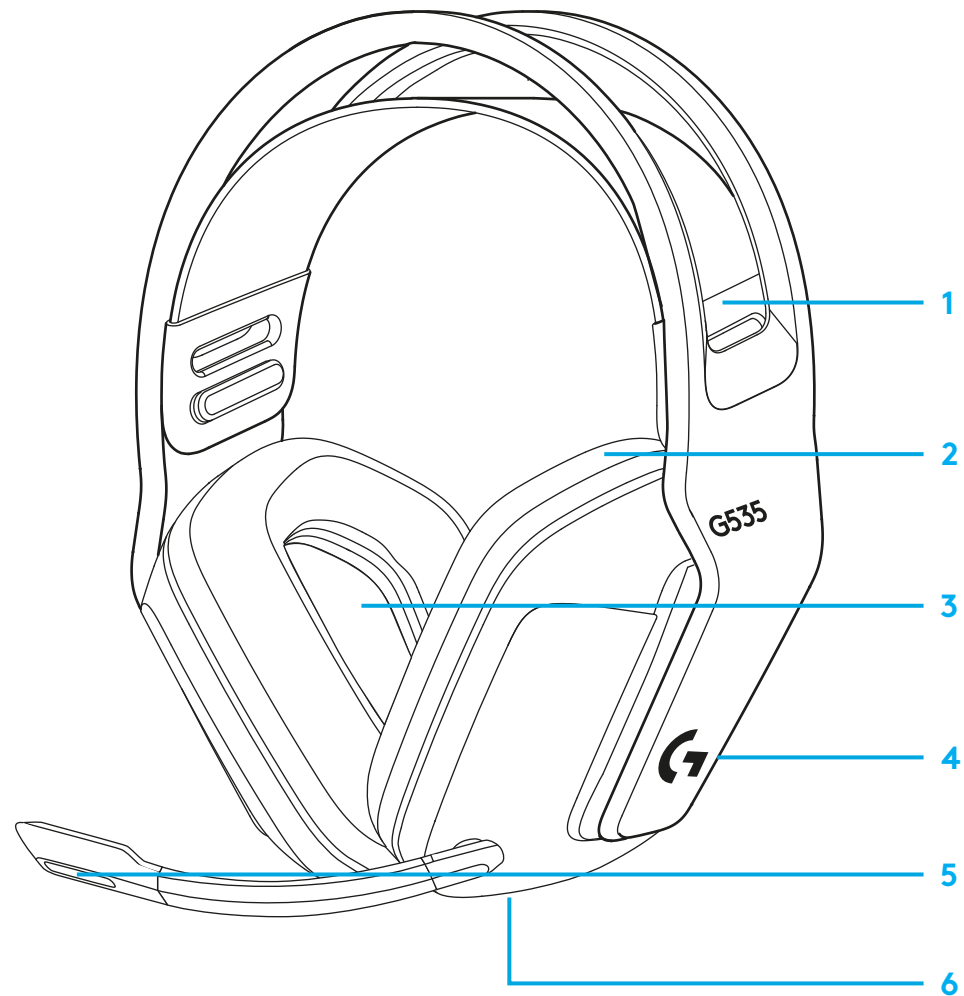


- Carregue os auscultadores quando a bateria estiver fraca.



## FUNCIONALIDADES

- 1 Alça ajustável e reversível
- 2 Auriculares de espuma com memória
- 3 Controladores de 40 mm
- 4 Controlo de volume no auricular
- 5 Microfone Flip-to-mute de 6 mm
- 6 Porta de carregamento USB-C

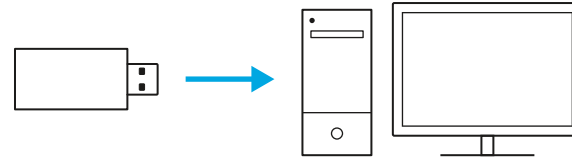


## PERGUNTAS FREQUENTES

[www.logitechG.com/support/G535](http://www.logitechG.com/support/G535)

# INSTALLATIE-INSTRUCTIES

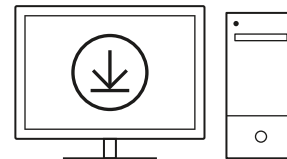
- Sluit de ontvanger aan op de USB-poort van je pc.



- Kort indrukken om AAN te zetten.

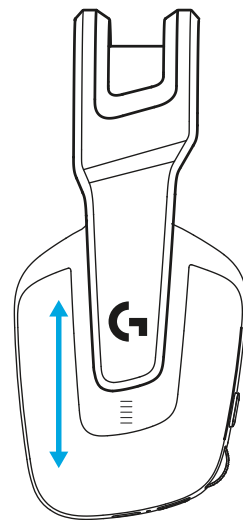


- (Optioneel) Download de Logitech G HUB-software voor geavanceerde functies. Te downloaden via [logitechG.com/ghub](https://logitechG.com/ghub)

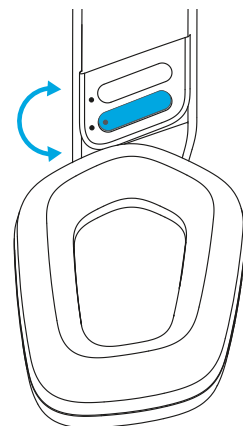


[logitechG.com/ghub](https://logitechG.com/ghub)

- De oorstukken zijn in hoogte verstelbaar.

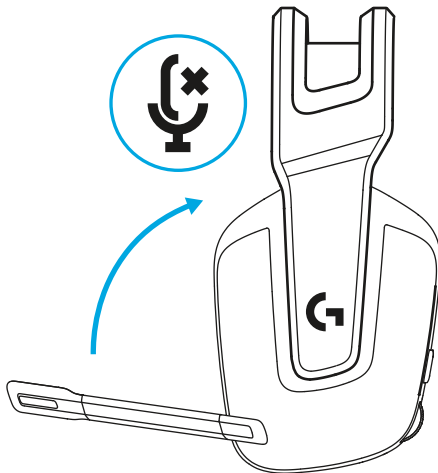


- De lengte van de hoofdband kan worden aangepast.

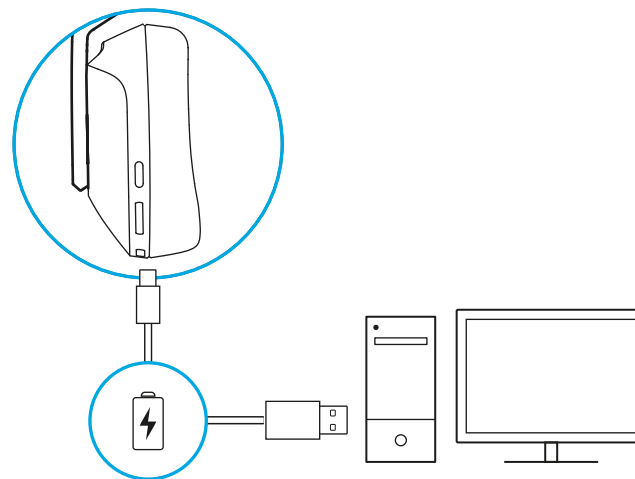




- Draai microfoonarm omhoog om te dempen.

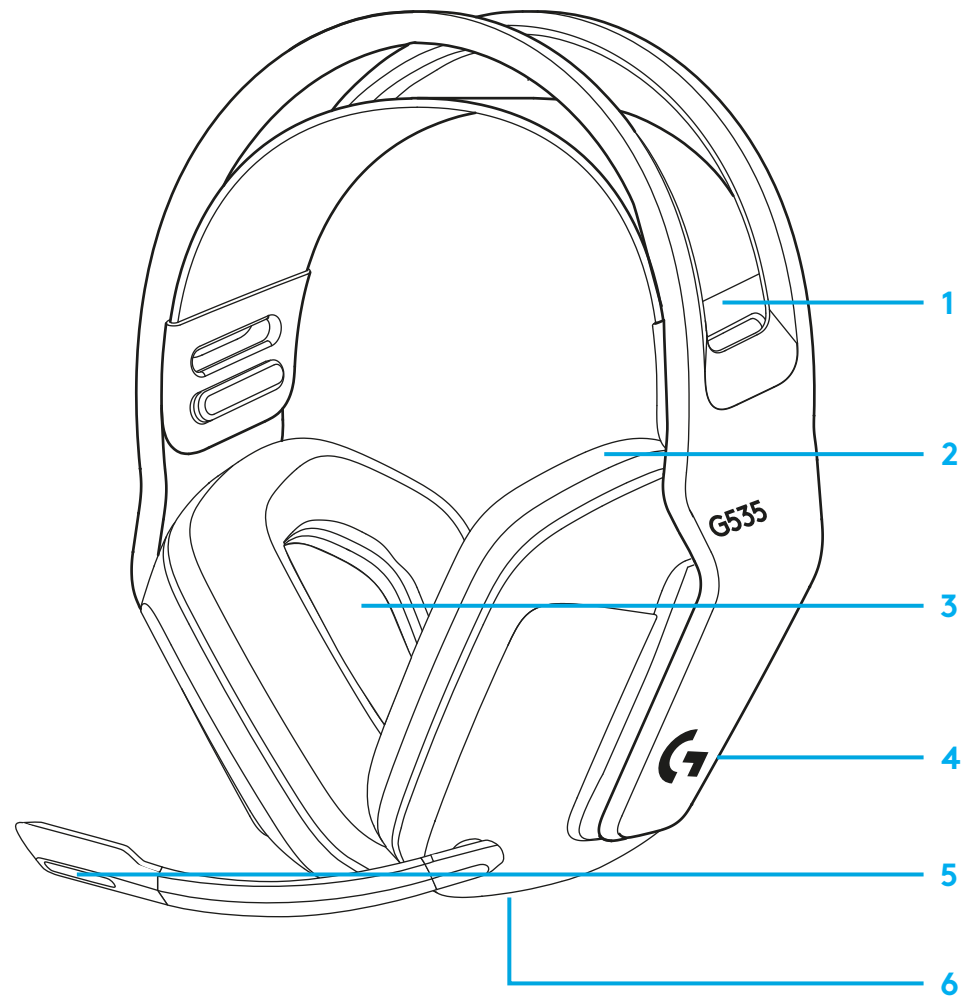


- Laad de headset op wanneer het batterijvermogen laag is.



# FUNCTIES

- 1 Verstelbare, omkeerbare hoofdbandophanging
- 2 Oorkussens van traagschuim
- 3 40mm-drivers
- 4 Volumeregeling op oorstuk
- 5 Flip-to-mute microfoon van 6 mm
- 6 USB-C-oplaadpoort

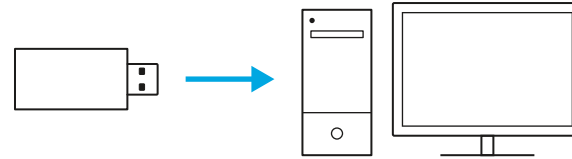


## VEELGESTELDE VRAGEN

[www.logitechG.com/support/G535](http://www.logitechG.com/support/G535)

# INSTALLATIONSVEJLEDNING

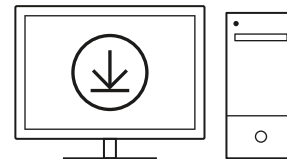
- Sæt modtageren i USB-porten på computeren.



- Tryk kort for at tænde.

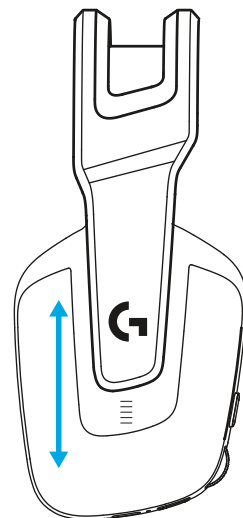


- (Valgfrit) Download Logitech G HUB-softwaren for at få adgang til de avancerede funktioner. Download på [logitechG.com/GHUB](https://logitechG.com/GHUB)

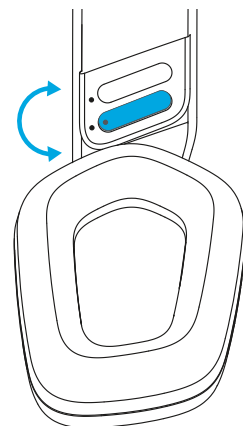


[logitechG.com/ghub](https://logitechG.com/ghub)

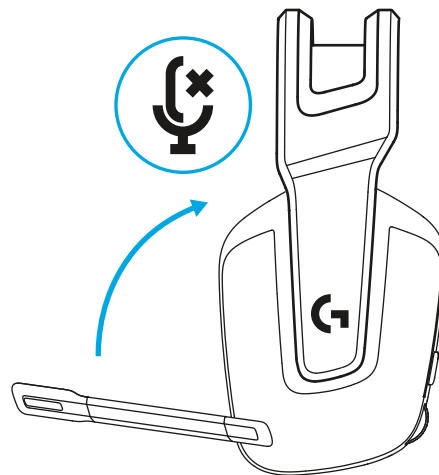
- Ørestykkerne kan justeres op og ned.



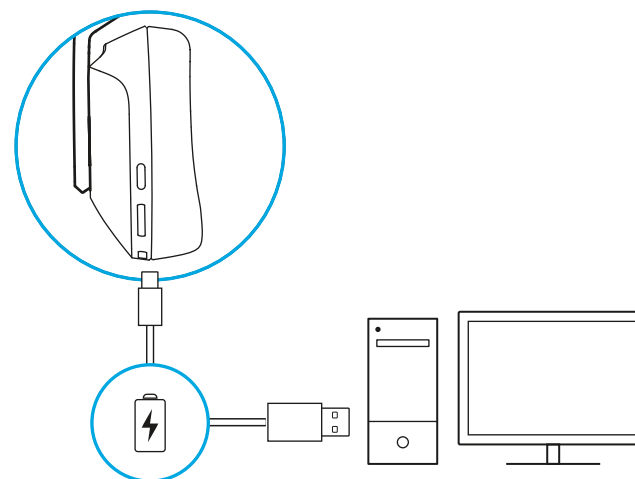
- Hovedbøjlen kan justeres i længde.



- Flyt mikrofonarmen op for at slå lyden fra.

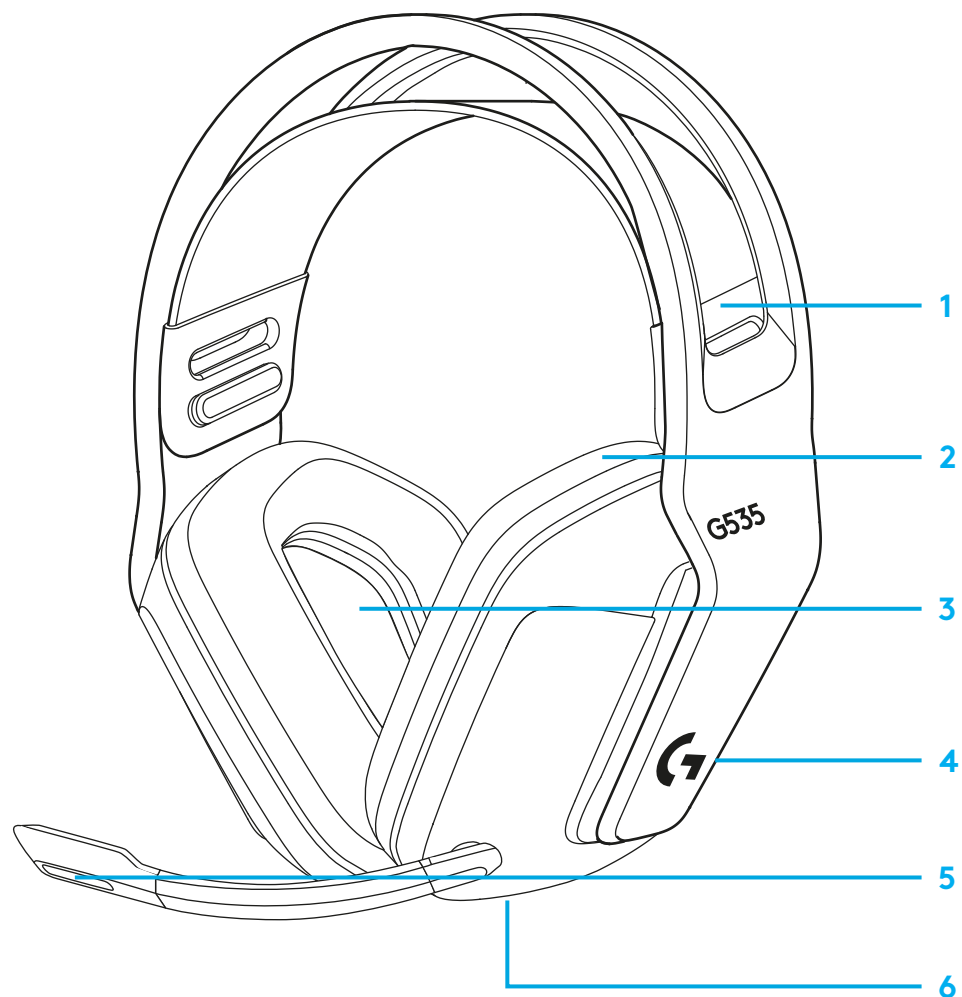


- Oplad headsettet, når batteriet er lavt.



## FUNKTIONER

- 1 Justerbar, vendbar stop
- 2 Ørepuder med memoryskum
- 3 40-mm-højtalereheder
- 4 Kontrolknapper til justering af lydstyrken
- 5 6 mm mikrofon, som kan slås fra ved at dreje den
- 6 USB-C port til opladning

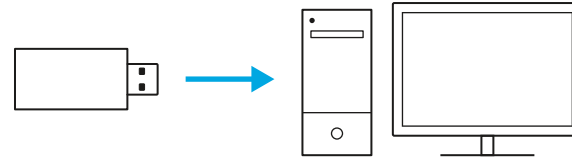


## OFTE STILLEDE SPØRGSMÅL

[www.logitechG.com/support/G535](http://www.logitechG.com/support/G535)

# KONFIGURERINGSVEILEDNING

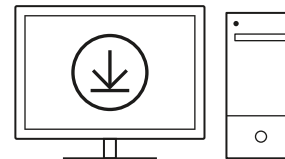
- Sett mottakeren inn i USB-porten på PC-en.



- Trykk kort for å slå den PÅ.

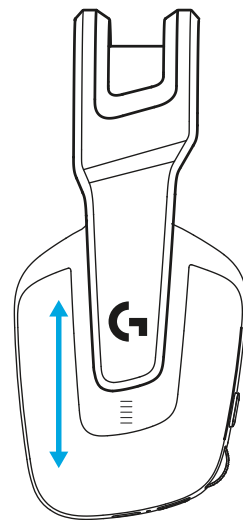


- (Valgfritt) Last ned Logitech G HUB-programvaren for å få tilgang til avanserte funksjoner. Kan lastes ned fra [logitechG.com/ghub](https://logitechG.com/ghub)

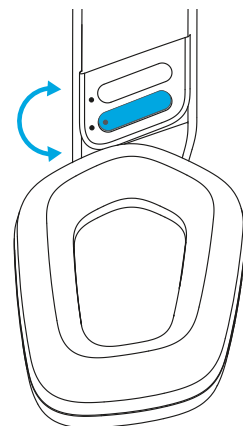


[logitechG.com/ghub](https://logitechG.com/ghub)

- Øreklokkene kan justeres opp og ned.

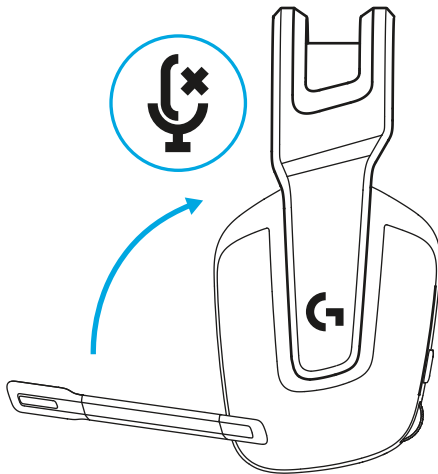


- Lengden på hodebøylen kan justeres.

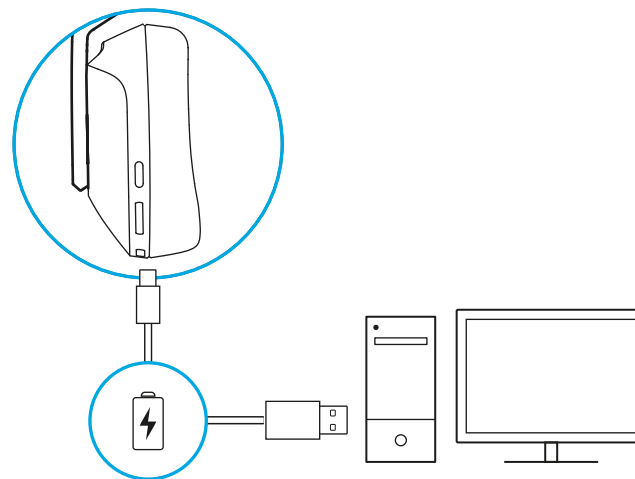




- Flipp opp mikrofonarmen for å dempe.

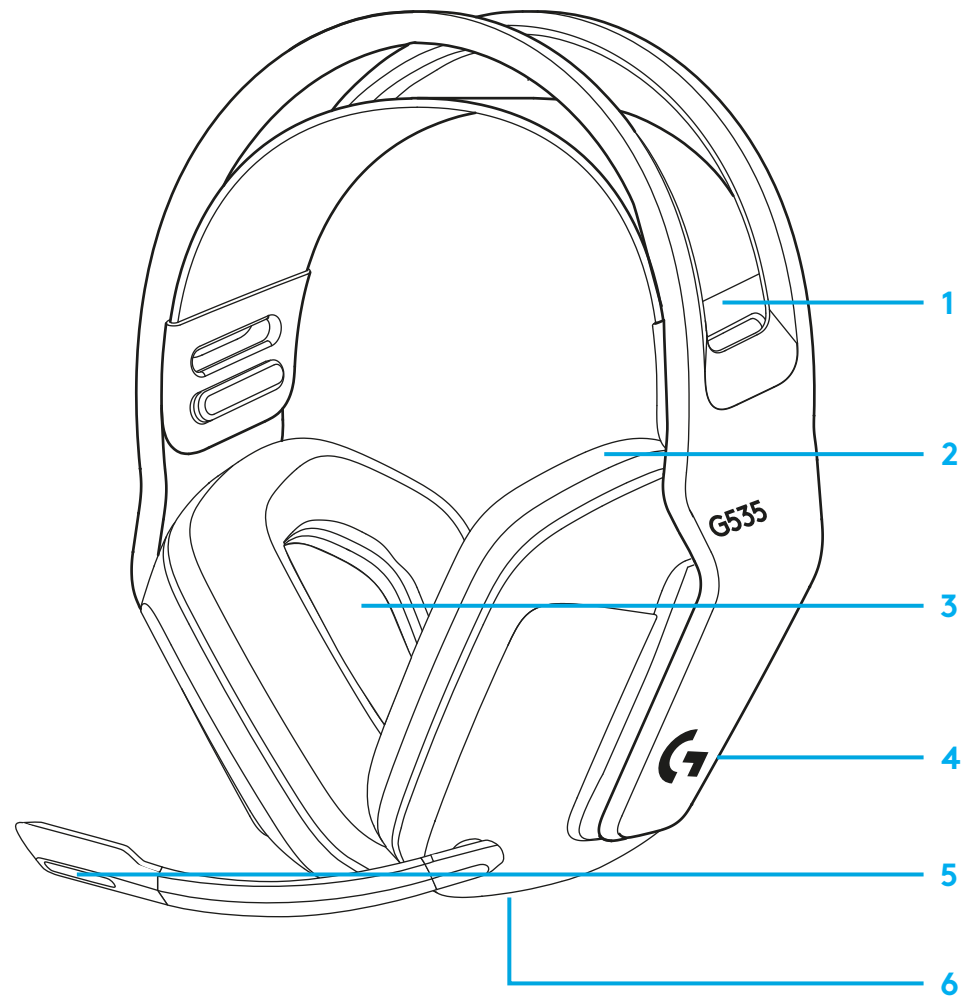


- Lad hodesettet når batterinivået er lavt.



## FUNKSJONER

- 1 Justerbart, reversibelt elastisk bånd
- 2 Øreputer med minneskum
- 3 40 mm-drivere
- 4 Volumkontroll på øret
- 5 6 mm mikrofon med flipp-for-å-dempe
- 6 USB-C-ladeport

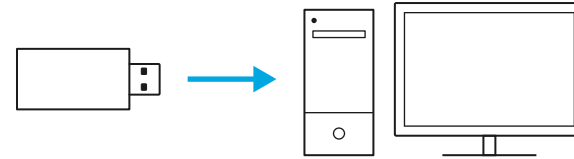


## VANLIGE SPØRSMÅL

[www.logitechG.com/support/G535](http://www.logitechG.com/support/G535)

# ASENNUSOHJEET

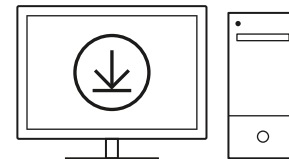
- Työnnä vastaanotin tietokoneen USB-porttiin.



- Kytke virta lyhyellä painalluksella.

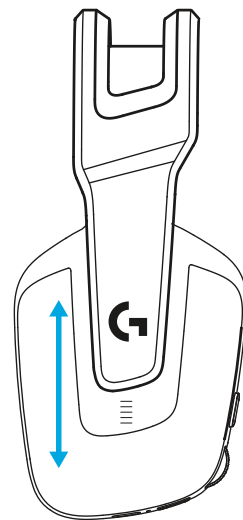


- (Valinnainen): Saat lisäominaisuuksia lataamalla Logitech G HUB -ohjelmiston. Lataa se osoitteesta [logitechG.com/ghub](https://logitechG.com/ghub)

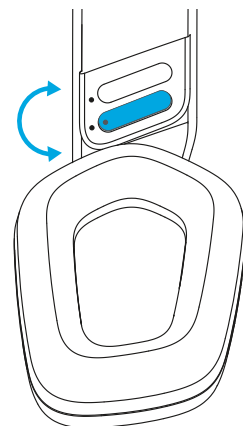


[logitechG.com/ghub](https://logitechG.com/ghub)

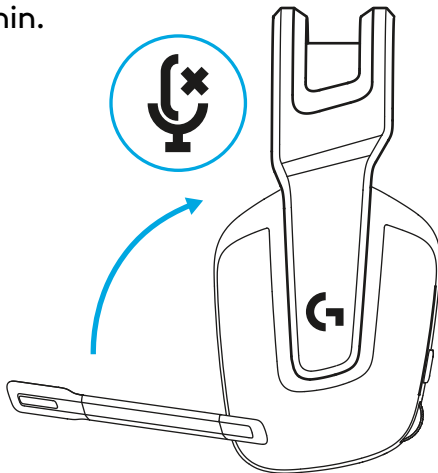
- Korvakuppeja voi säätää ylös- tai alaspäin.



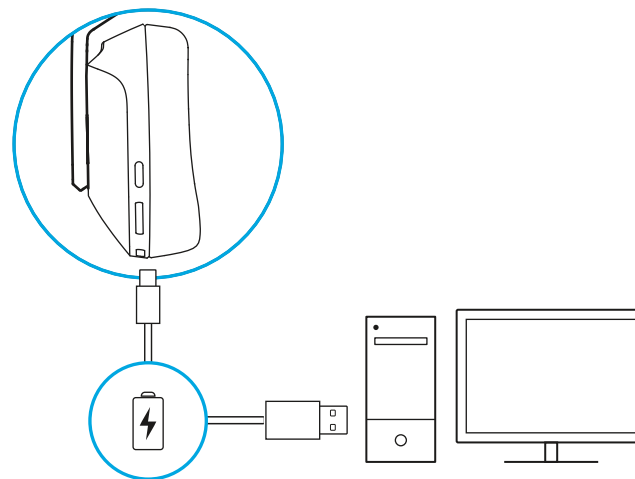
- Pantaosan pituutta voi myös säätää.



- Käännä mikrofonin puomi ylös vaimentaaksesi mikrofonin.

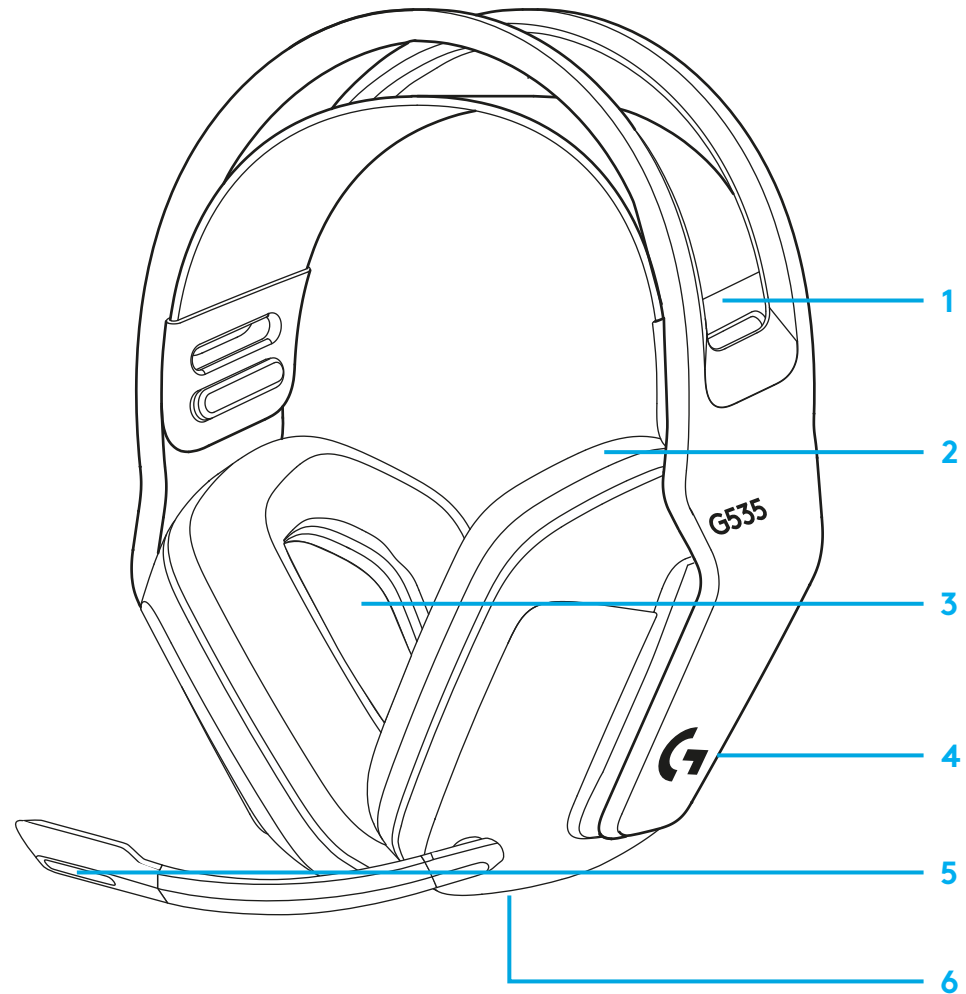


- Lataa kuulokemikrofoni, kun akku on vähissä.



## OMINAISUUDET

- 1 Säädettävä ja käännettävä jousitettu hihna
- 2 Muodon muistavat vahtomuovikorvatyyny
- 3 40 mm:n kaiuttimelementit
- 4 Äänenvoimakkuuden säädin korvakupissa
- 5 Kääntämällä vaimennettava 6 mm:n mikrofoni
- 6 USB-C-latausportti

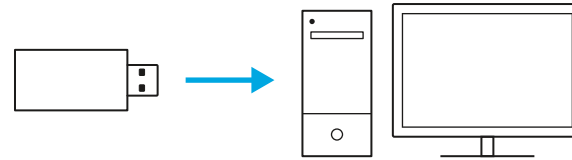


## USEIN KYSYTYT KYSYMYKSET

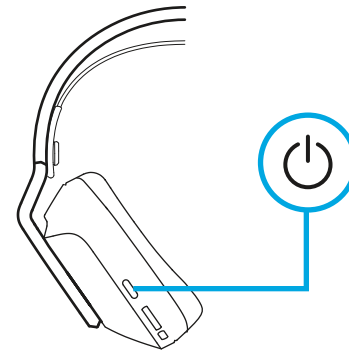
[www.logitechG.com/support/G535](http://www.logitechG.com/support/G535)

## ΟΔΗΓΙΕΣ ΕΓΚΑΤΑΣΤΑΣΗΣ

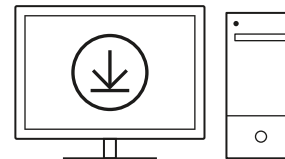
– Τοποθετήστε τον δέκτη στη θύρα USB του υπολογιστή.



– Πιέστε στιγμιαία για ενεργοποίηση.

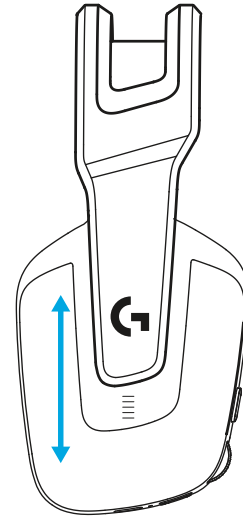


– (Προαιρετικά) Κατεβάστε το λογισμικό Logitech G HUB για να αποκτήσετε πρόσβαση σε σύνθετες λειτουργίες. Κατεβάστε το από τη διεύθυνση [logitechG.com/ghub](https://logitechG.com/ghub)

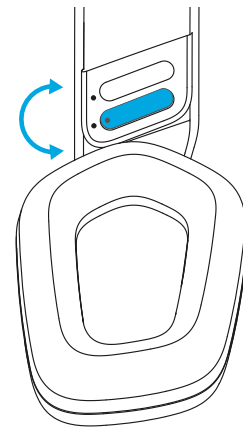


[logitechG.com/ghub](https://logitechG.com/ghub)

- Μπορείτε να ρυθμίσετε τα ακουστικά επάνω και κάτω.

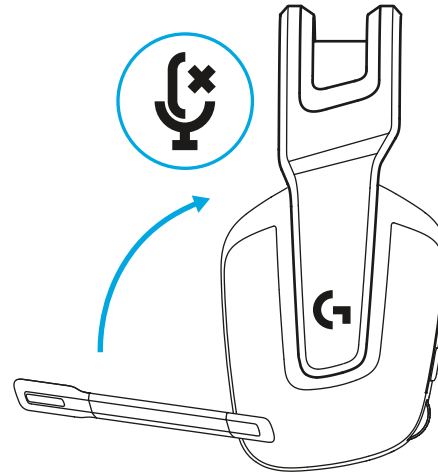


- Μπορείτε να ρυθμίσετε το μήκος του στηρίγματος κεφαλής.

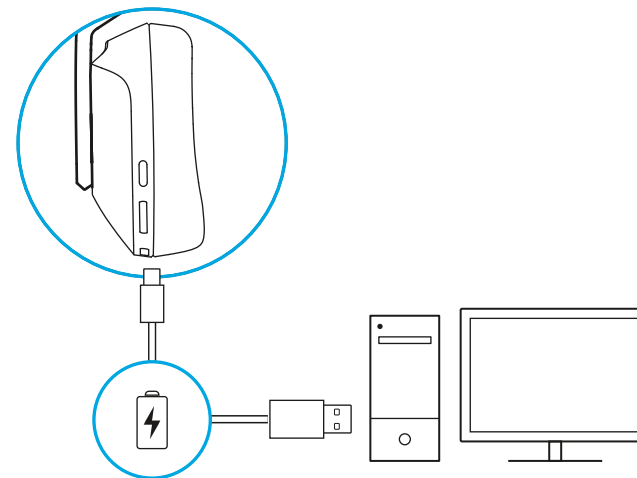




- Μετακινήστε τον βραχίονα προς τα επάνω για σίγαση.

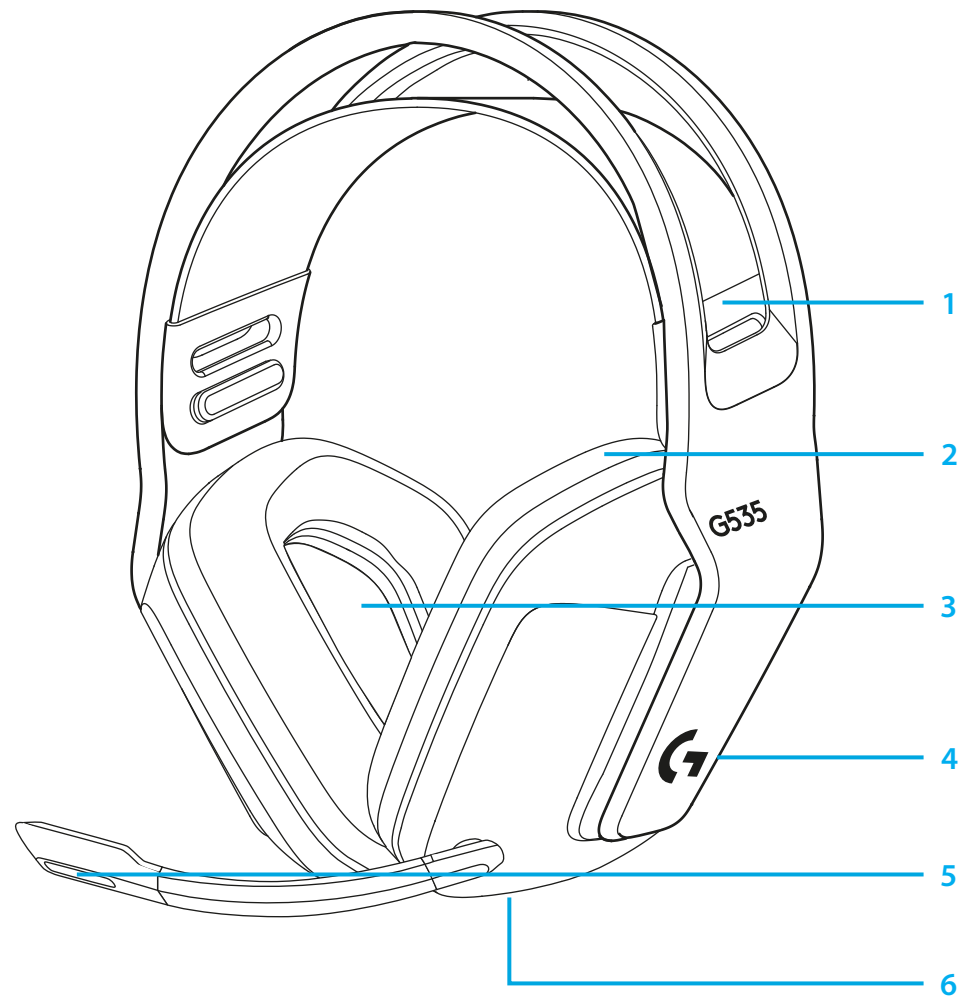


- Φορτίστε το σετ μικροφώνου-ακουστικών όταν η ισχύς της μπαταρίας είναι χαμηλή.



## ΧΑΡΑΚΤΗΡΙΣΤΙΚΑ

- 1 Προσαρμόσιμος ιμάντας με ανάρτηση και δυνατότητα αλλαγής πλευράς
- 2 Μαξιλαράκια για τα αυτιά από αφρό μνήμης
- 3 Οδηγοί 40 mm
- 4 Στοιχείο ελέγχου έντασης ήχου στο ακουστικό
- 5 Μικρόφωνο 6 mm με δυνατότητα σίγασης με αναδίπλωση
- 6 Θύρα φόρτισης USB-C

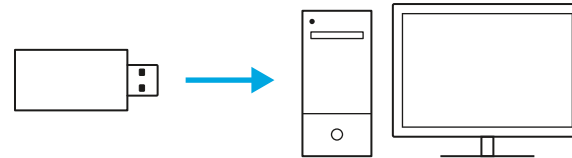


## ΣΥΝΗΘΕΙΣ ΕΡΩΤΗΣΕΙΣ

[www.logitechG.com/support/G535](http://www.logitechG.com/support/G535)

## ПОДГОТОВКА К РАБОТЕ

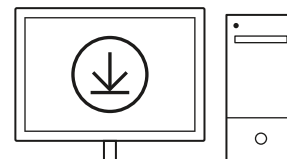
– Вставьте приемник в USB-порт компьютера.



– Нажмите выключатель питания и быстро отпустите его, чтобы включить устройство.

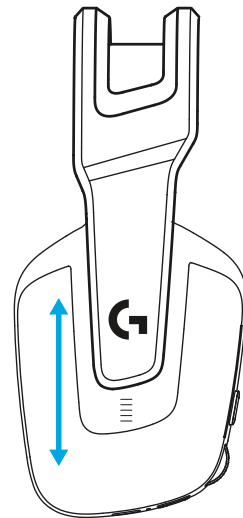


– (Дополнительно). Чтобы воспользоваться дополнительными функциями, требуется ПО Logitech G HUB. Его можно загрузить по адресу [logitechG.com/ghub](https://logitechG.com/ghub)

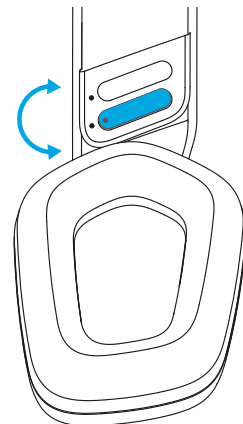


[logitechG.com/ghub](https://logitechG.com/ghub)

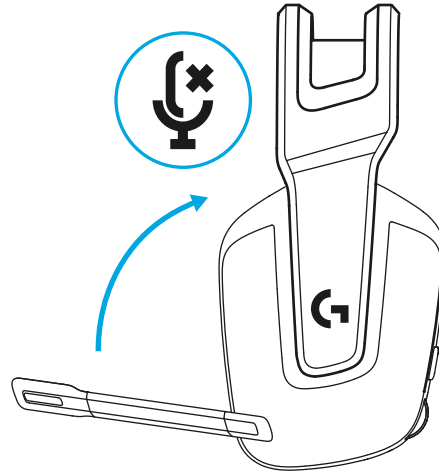
- При необходимости чашки наушников можно разместить выше или ниже.



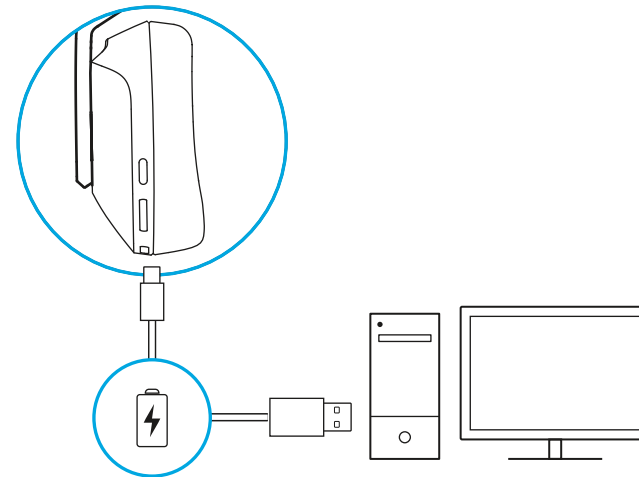
- Пользователь может также отрегулировать длину оголовья.



- Чтобы отключить звук, поверните микрофон вверх.

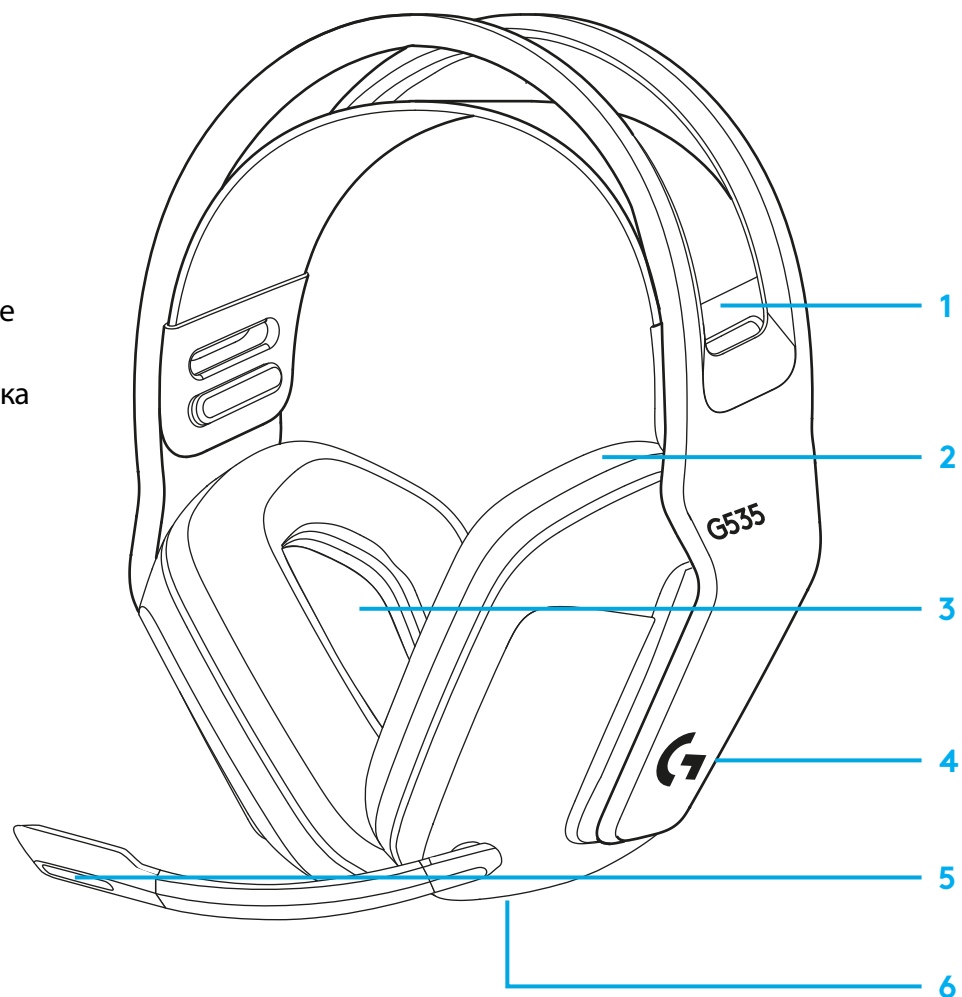


- Когда уровень заряда станет низким, зарядите гарнитуру.



## ХАРАКТЕРИСТИКИ

- 1 Мягкое двустороннее оголовье с возможностью регулировки размера
- 2 Амбушюры из мягкого наполнителя с эффектом памяти
- 3 Диффузоры 40 мм
- 4 Элементы управления громкостью находятся на наушнике
- 5 6-миллиметровый микрофон с функцией отключения звука при повороте
- 6 Порт USB-C для зарядки

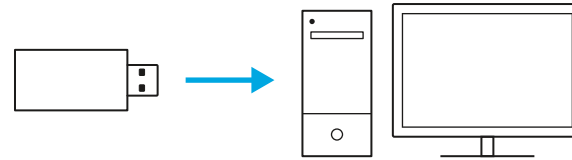


## ВОПРОСЫ И ОТВЕТЫ

[www.logitechG.com/support/G535](http://www.logitechG.com/support/G535)

# PRZYGOTOWANIE

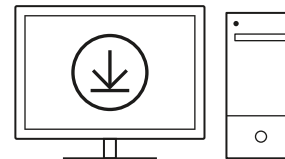
- Podłącz odbiornik do portu USB komputera PC.



- Naciśnij i przytrzymaj krótko, aby włączyć.

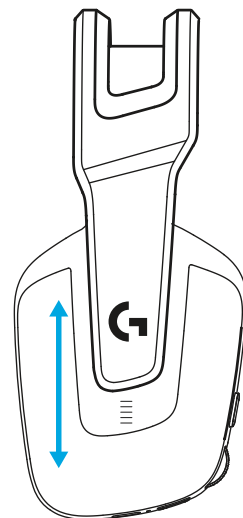


- (Opcjonalnie) Pobierz oprogramowanie Logitech G HUB, aby uzyskać dostęp do zaawansowanych funkcji. Pobierz ze strony [logitechG.com/g Hub](https://logitechG.com/g Hub)

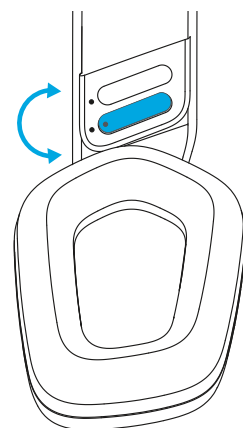


[logitechG.com/g Hub](https://logitechG.com/g Hub)

- Muszle słuchawkowe można regulować w górę i w dół.

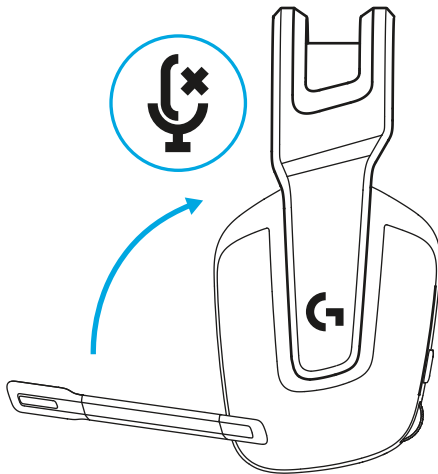


- Długość pałki można także regulować.

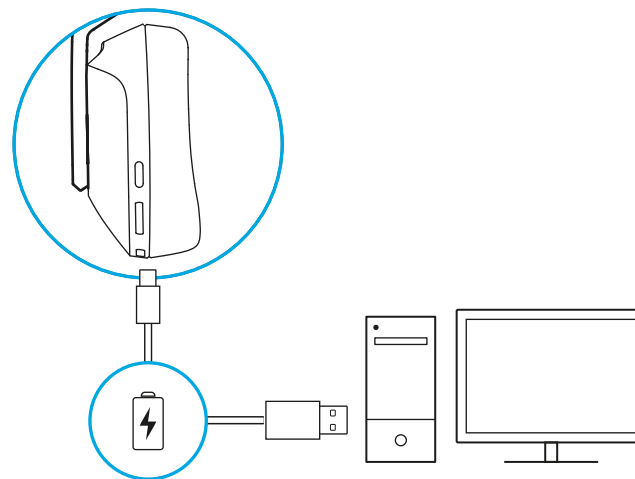




- Obróć wysięgnik mikrofonu w górę aby wyciszyć.

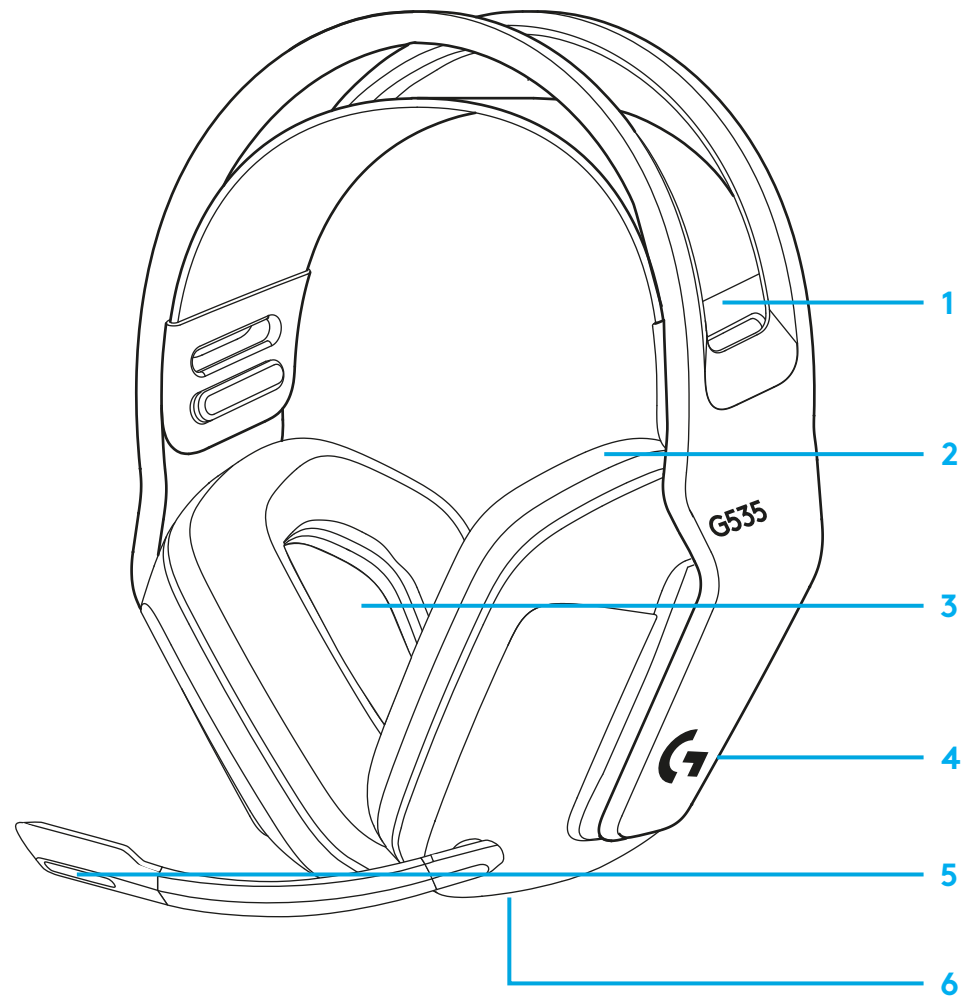


- Naładuj zestaw słuchawkowy, gdy poziom naładowania baterii jest niski.



## FUNKCJE

- 1 Regulowana, dwustronna opaska nośna
- 2 Nauszniki z pianki zapamiętującej kształt
- 3 Membrany o średnicy 40 mm
- 4 Regulacja głośności przy uchu
- 5 6-milimetrowy mikrofon z możliwością wyciszenia
- 6 Port ładowania USB-C

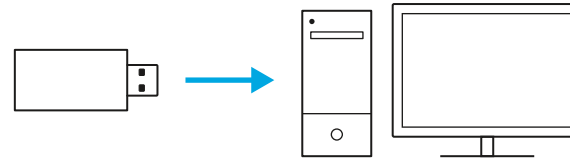


## CZĘSTO ZADAWANE PYTANIA

[www.logitechG.com/support/G535](http://www.logitechG.com/support/G535)

# ÜZEMBE HELYEZÉSI ÚTMUTATÓ

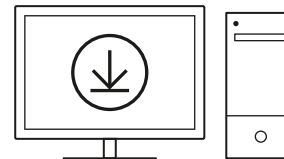
- Helyezze be a vevőegységet a számítógép USB-portjába.



- Nyomja meg röviden a bekapcsoláshoz.

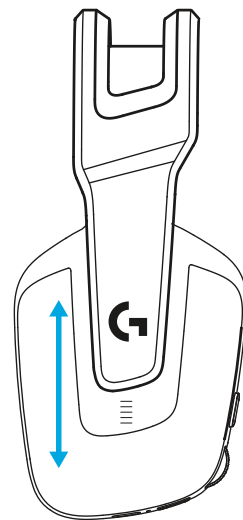


- (Nem kötelező) Töltse le a Logitech G HUB szoftvert a speciális funkciók eléréséhez. Letölthető a [LogitechG.com/ghub](https://LogitechG.com/ghub) weblapról.

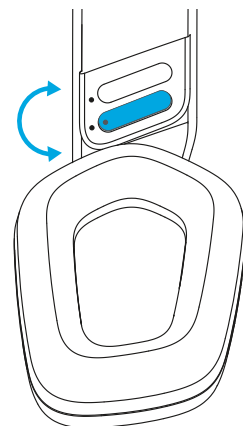


[logitechG.com/ghub](https://logitechG.com/ghub)

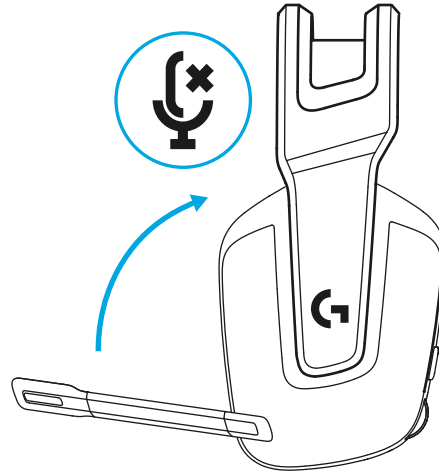
- A fülpárnák felfelé és lefelé állíthatók.



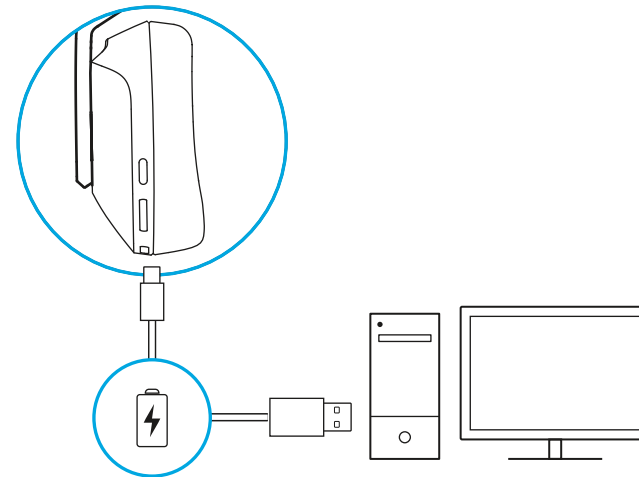
- A fejpánt hossza állítható.



- Billentse felfelé a mikrofonkart a némításhoz.

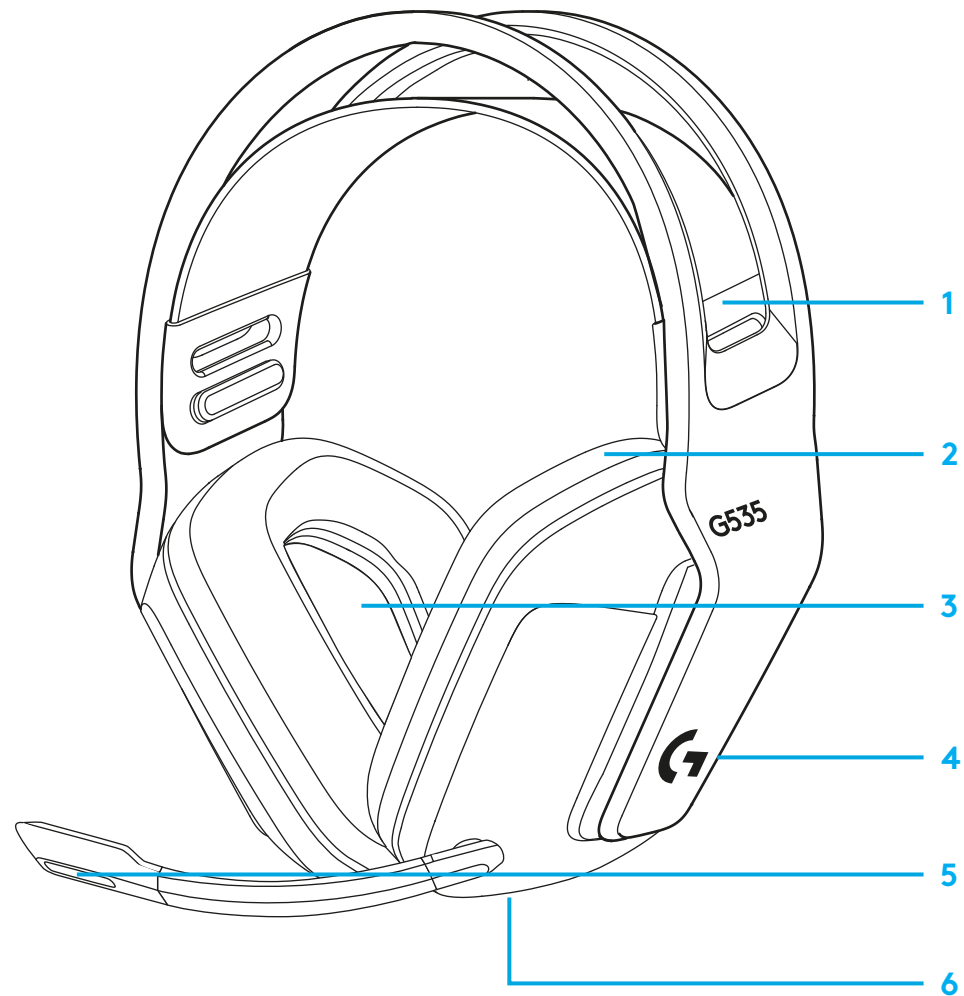


- Ha alacsony az akkumulátor töltöttsége, töltsé a mikrofonos fejhallgatót.



# JELLEMZŐK

- 1 Állítható, kifordítható felfüggesztő fejpánt
- 2 Memóriahabos fülpárnák
- 3 40 mm-es hangsugárzók
- 4 Fülön állítható hangerőszabályzó
- 5 Felbillentéssel némítható 6 mm-es mikrofon
- 6 USB-C töltőaljzat

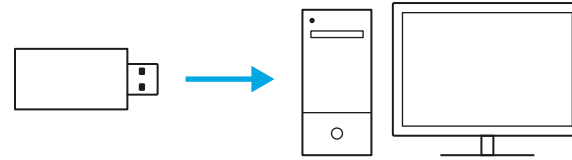


## GYAKORI KÉRDÉSEK

[www.logitechG.com/support/G535](http://www.logitechG.com/support/G535)

# POKYNY PRO NASTAVENÍ

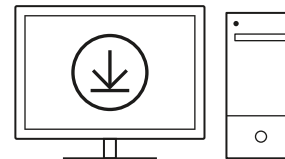
- Zapojte přijímač do portu USB na svém počítači PC.



- Krátkým stiskem zapněte soupravu.

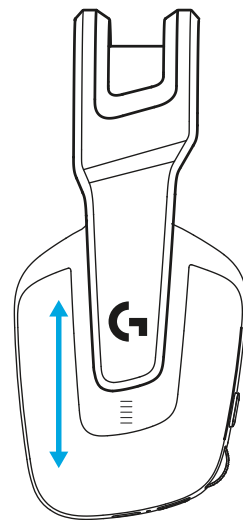


- (Volitelně) Stáhněte si software Logitech G HUB pro přístup k pokročilým funkcím. Ke stažení na stránce [logitechG.com/ghub](https://logitechG.com/ghub)

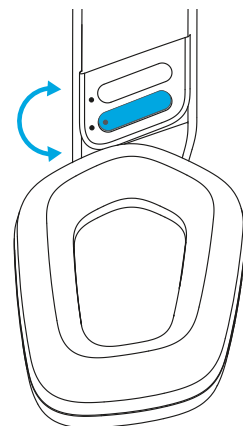


[logitechG.com/ghub](https://logitechG.com/ghub)

- Náušníky je možné posouvat nahoru a dolů.

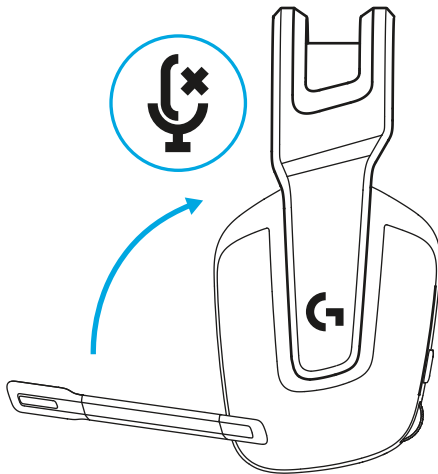


- Můžete si nastavit délku hlavového mostu.

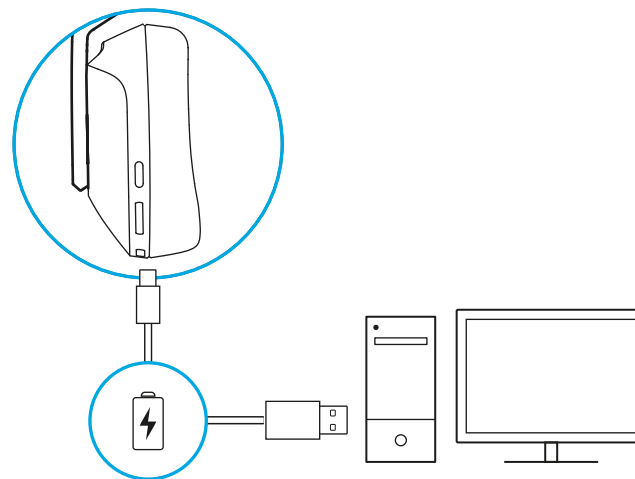




- Sklopte držák mikrofonu pro ztlumení.

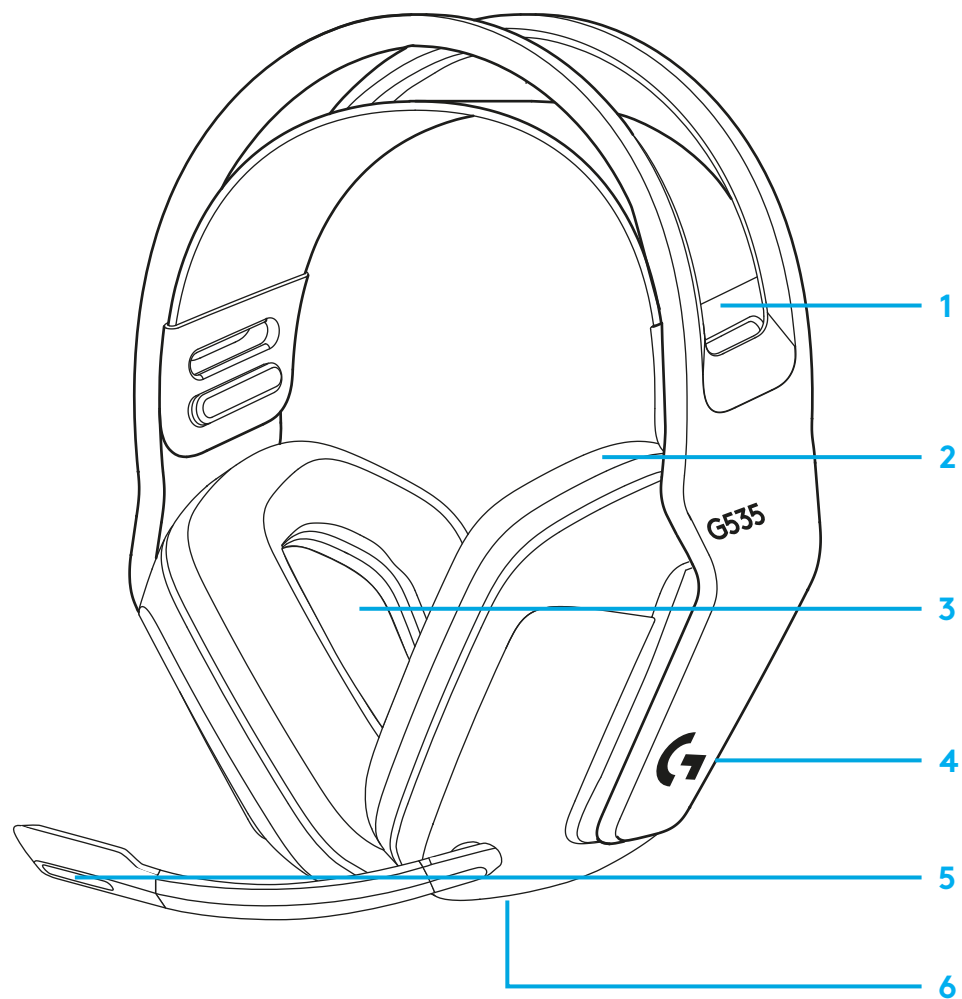


- Když se blíží vybití baterie, náhlavní soupravu nabijte.



## FUNKCE

- 1 Nastavitelný oboustranný závěsný popruh
- 2 Náušníky s paměťovou pěnou
- 3 40mm měniče
- 4 Ovládání hlasitosti na sluchátku
- 5 6mm mikrofon s funkcí ztlumení sklopením
- 6 Nabíjecí port USB-C

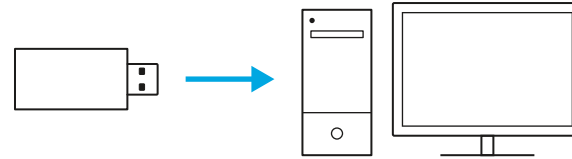


## ČASTÉ DOTAZY

[www.logitechG.com/support/G535](http://www.logitechG.com/support/G535)

## POKYNY NA NASTAVENIE

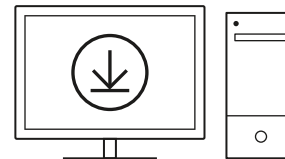
- Zapojte prijímač do portu USB na svojom počítači PC.



- Krátkym stlačením zapnite súpravu.

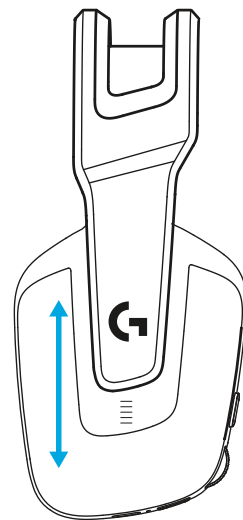


- (Voliteľne) prevezmite si softvér Logitech G HUB na prístup k pokročilým funkciám. Na prevzatie na stránke [logitechG.com/ghub](https://logitechG.com/ghub)

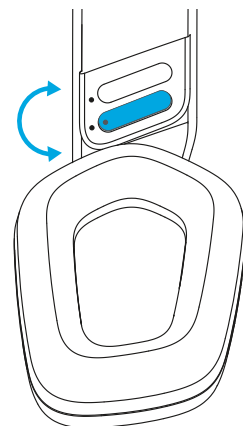


[logitechG.com/ghub](https://logitechG.com/ghub)

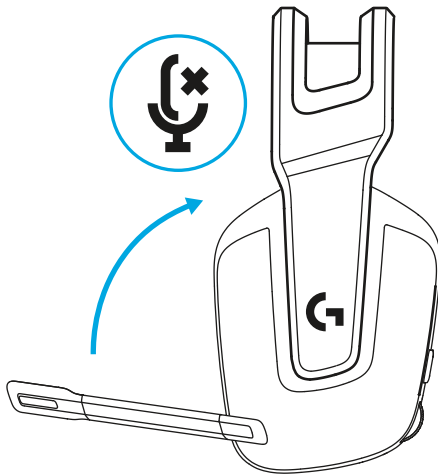
- Náušníky je možné posúvať nahor a dole.



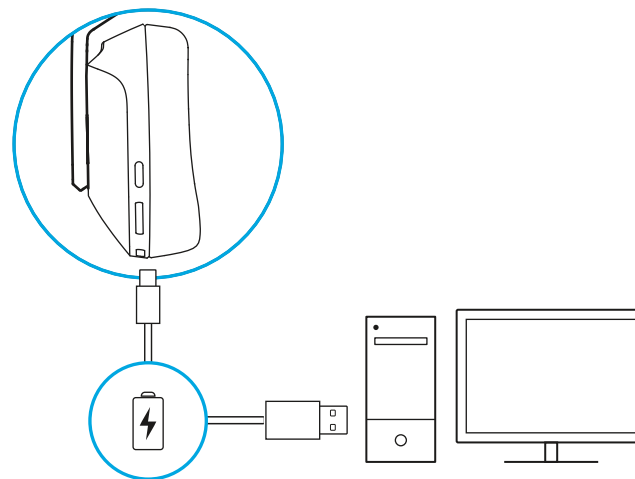
- Môžete si nastaviť dĺžku hlavového mosta.



- Sklopte držiak mikrofónu na stlmenie.

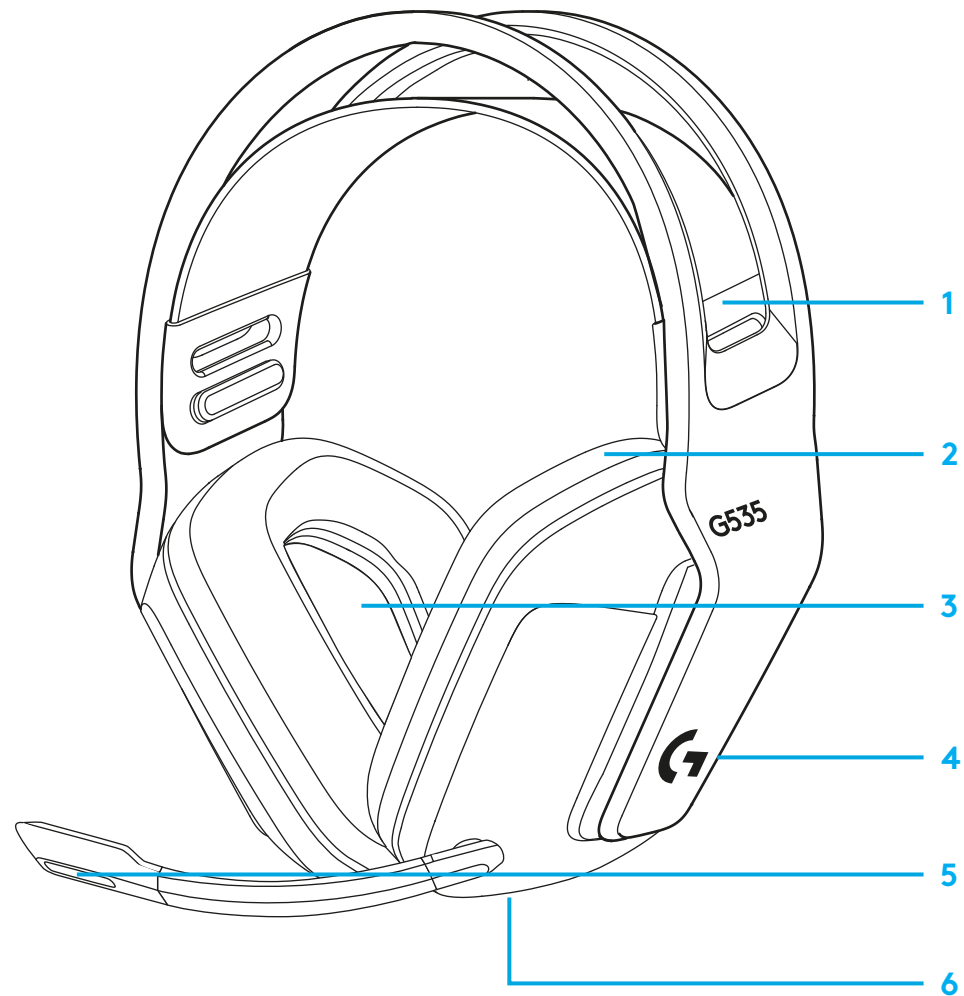


- Keď sa blíži vybitie batérie, náhlavnú súpravu nabite.



# FUNKCIE

- 1 Nastaviteľný obojstranný závesný popruh
- 2 Náušníky s pamäťovou penou
- 3 40mm meniče
- 4 Ovládanie hlasitosti na slúchadle
- 5 6mm mikrofón s funkciou stlmenia sklopením
- 6 Nabíjací port USB-C

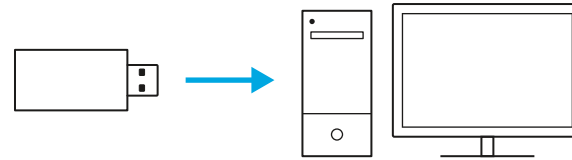


## ČASTO KLADENÉ OTÁZKY

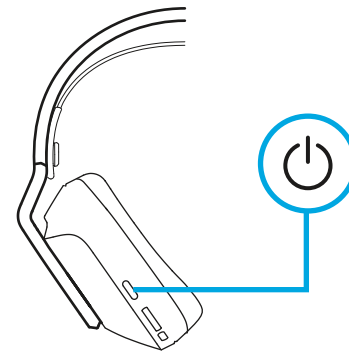
[www.logitechG.com/support/G535](http://www.logitechG.com/support/G535)

## ПІДГОТОВКА ДО РОБОТИ

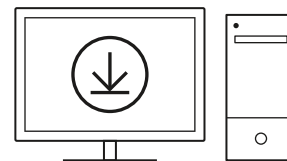
- Вставте приймач у USB-порт комп'ютера.



- Натисніть вимикач живлення та швидко відпустіть його, щоб увімкнути пристрій.

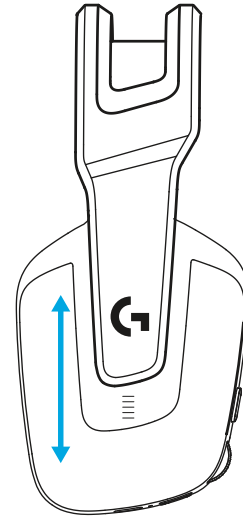


- (Додатково). Щоб отримати доступ до додаткових функцій, потрібне ПЗ Logitech G HUB. Завантажити його можна на сторінці [logitechG.com/ghub](https://logitechG.com/ghub)

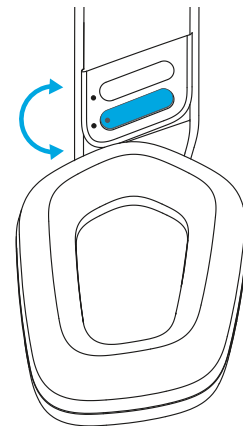


[logitechG.com/ghub](https://logitechG.com/ghub)

- За потреби чашки навушників можна розташувати вище або нижче.

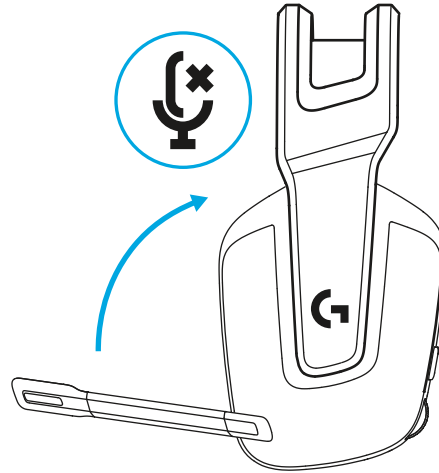


- Користувач також може відрегулювати довжину наголів'я.

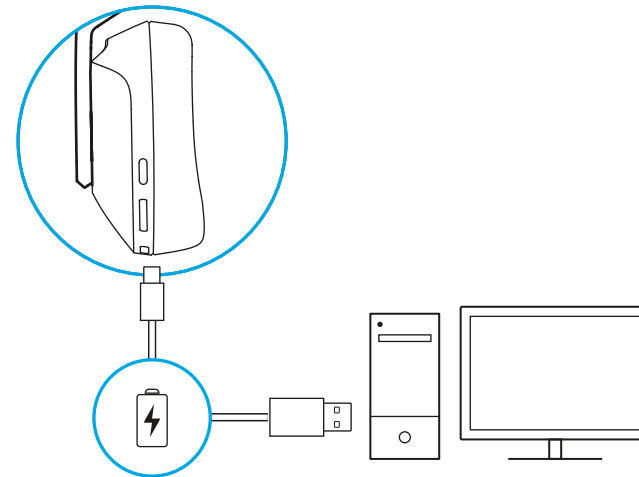




- Поверніть мікрофон угору, щоб вимкнути звук.

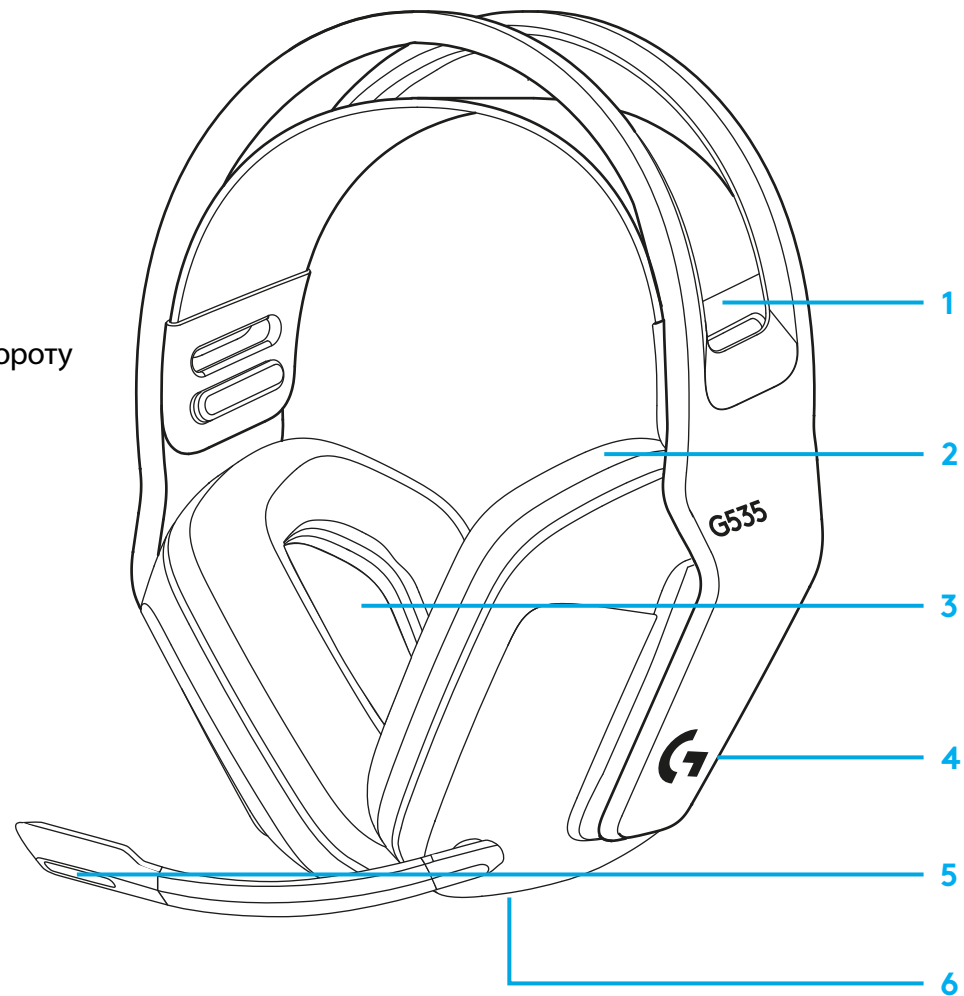


- Зарядіть гарнітуру, коли рівень заряду батареї стане низьким.



## ХАРАКТЕРИСТИКИ

- 1 М'яке симетричне наголів'я, яке можна регулювати
- 2 Амбушури з піноматеріалу
- 3 Дифузори 40 мм
- 4 Елементи керування гучністю знаходяться на навушнику
- 5 Мікрофон (6 мм) із функцією вимкнення звуку під час повороту
- 6 Порт USB-C для заряджання

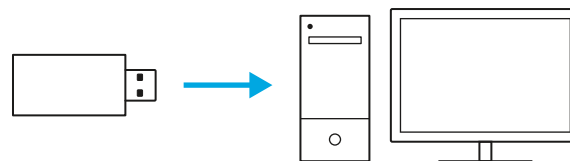


## ЗАПИТАННЯ Й ВІДПОВІДІ

[www.logitechG.com/support/G535](http://www.logitechG.com/support/G535)

# SEADISTAMISE JUHISED

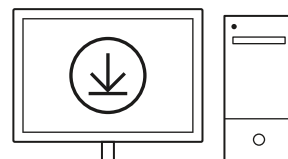
- Sisestage vastuvõtja oma arvuti USB-porti.



- Vajutage korraks, et SISSE lülitada.

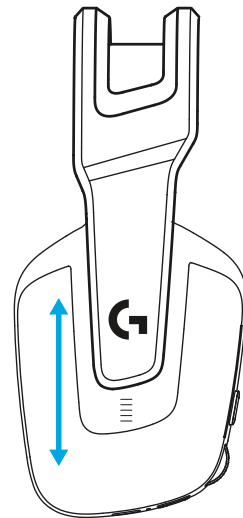


- (Valikuline) Lisafunktsioonide kasutamiseks laadige alla tarkvara Logitech G HUB. Laadige alla aadressilt [logitechG.com/ghub](https://logitechG.com/ghub)

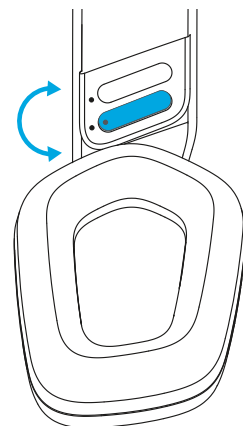


[logitechG.com/ghub](https://logitechG.com/ghub)

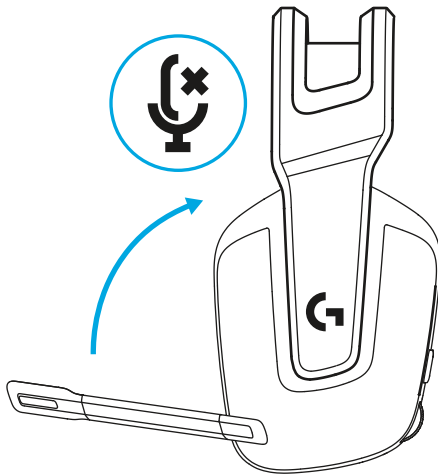
- Kõrvaklappe saab reguleerida üles ja alla.



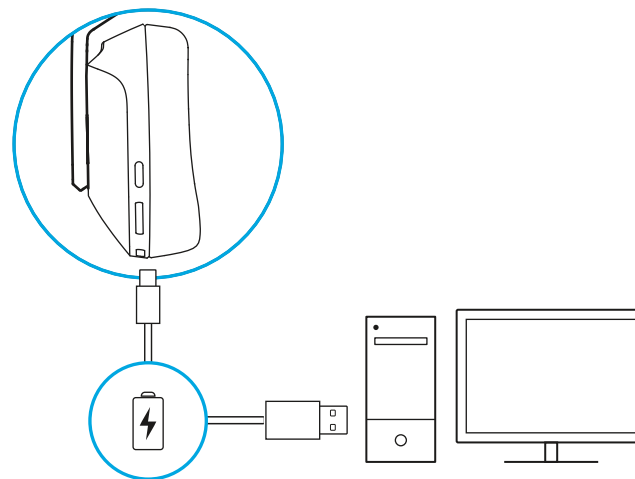
- Peaosa pikkust saab reguleerida.



- Vaigistamiseks keerake mikrofonivars üles.

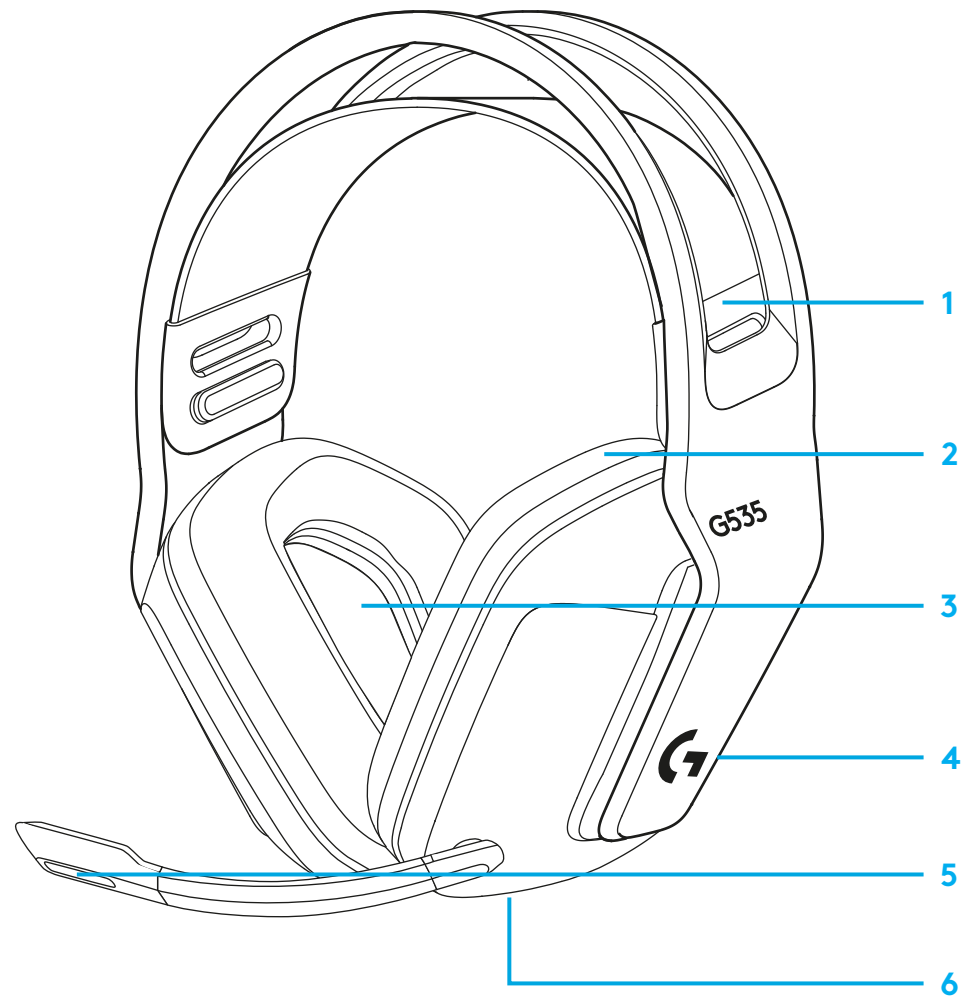


- Aku tühjenemisel laadige peakomplekti.



# KIRJELDUS

- 1 Reguleeritav, ümberpööratav kinnitusrihm
- 2 Memory-foam tehnoloogiat kasutavad kõrvapadjad
- 3 40 mm draiverid
- 4 Helitugevus kõrva peal
- 5 Vaigistamiseks keeratav 6 mm mikrofon
- 6 USB-C-laadimisport

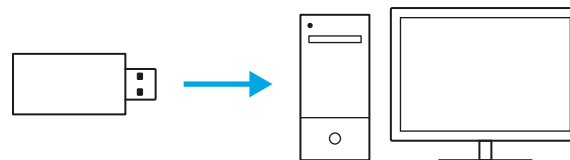


## KORDUMA KIPPUVAD KÜSIMUSED

[www.logitechG.com/support/G535](http://www.logitechG.com/support/G535)

# SAGATAVOŠANA DARBAM

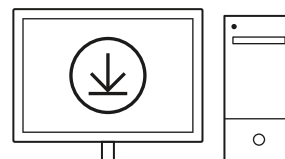
- Ievietojiet uztvērēju sava datora USB pieslēgvieta.



- Īsi nospiediet, lai ieslēgtu.

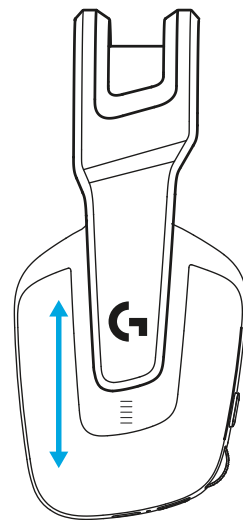


- (Pēc izvēles) Lejupielādējiet "Logitech G HUB" programmatūru, lai piekļūtu papildfunkcijām. Lejupielādējiet vietnē [logitechG.com/ghub](https://logitechG.com/ghub)

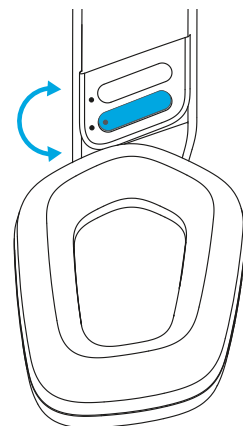


[logitechG.com/ghub](https://logitechG.com/ghub)

- Austiņas var bīdīt uz augšu un uz leju.

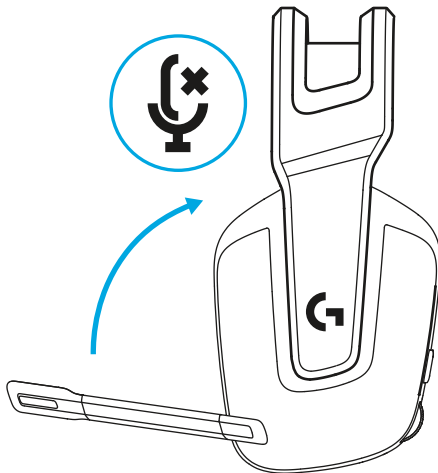


- Var pielāgot galvas stīpas garumu.

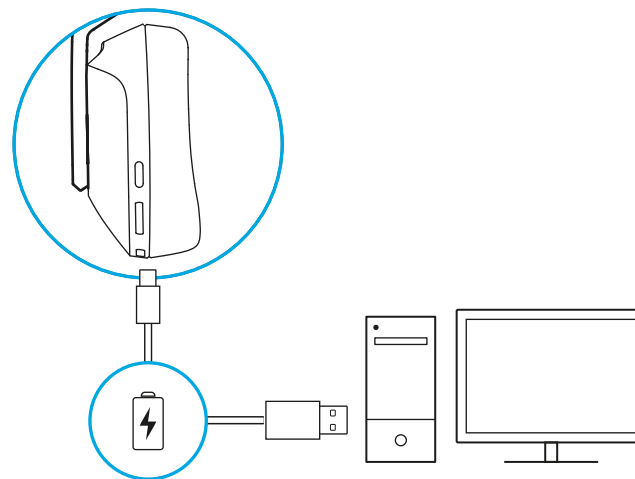




- Pārvietojiet kātu augšup, lai izslēgtu skaņu.

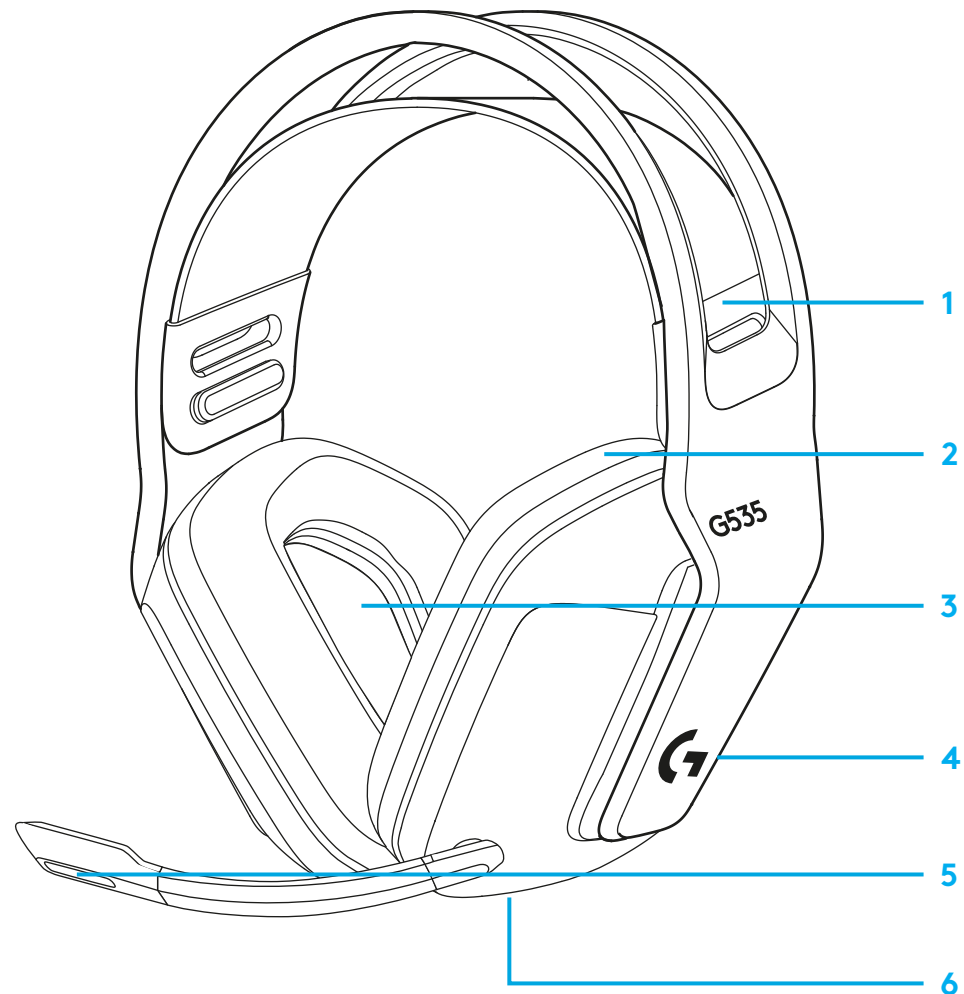


- Uzlādējiet austiņas, kad akumulatora līmenis ir zems.



## APRAKSTS

- 1 Pielāgojama abpusēja elastīga sikсна
- 2 Austiņas ar “memory foam” putu materiālu
- 3 40 mm skandas
- 4 Skaļuma pielāgošana uz austiņas
- 5 6 mm mikrofons, apvēršot var izslēgt skaņu
- 6 USB-C uzlādes pieslēgvietā

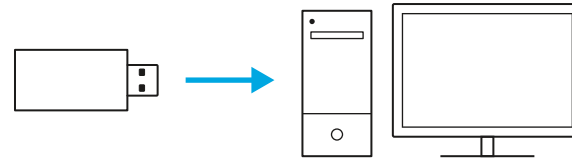


## BIEŽĀK UZDOTIE JAUTĀJUMI

[www.logitechG.com/support/G535](http://www.logitechG.com/support/G535)

# SĄRANKOS INSTRUKCIJOS

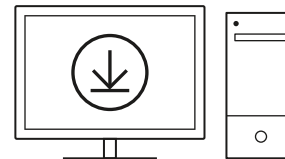
- Įkiškite imtuvą į savo kompiuterio USB lizdą.



- Trumpai nuspauskite norėdami įjungti.

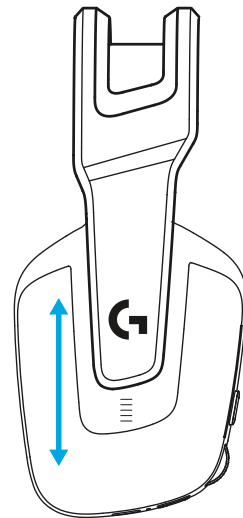


- (Pasirinktinai) Atsisiųskite „Logitech G HUB“ programinę įrangą, norėdami prieiti prie papildomų funkcijų. Atsisiųskite iš [logitechG.com/ghub](https://logitechG.com/ghub)

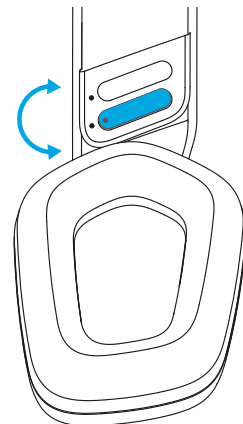


[logitechG.com/ghub](https://logitechG.com/ghub)

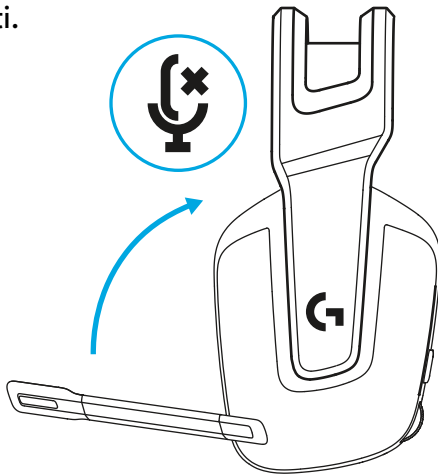
- Ausinių pagalvėles galima reguliuoti traukiant aukštyn ir žemyn.



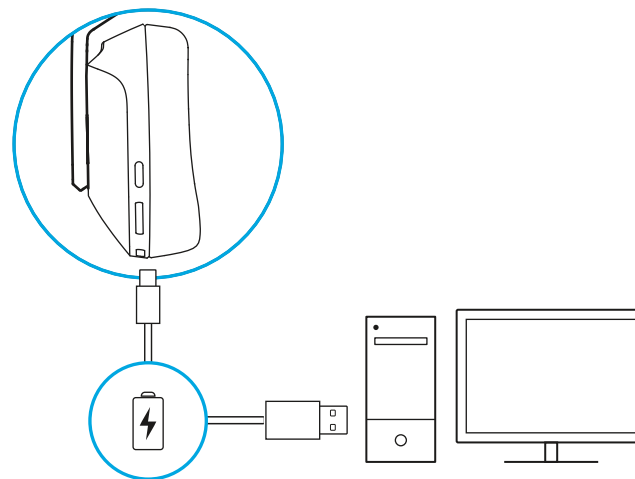
- Taip pat galima reguliuoti lankelio ilgį.



- Pajudinkite mikrofono stiebą aukštyn norėdami nutildyti.

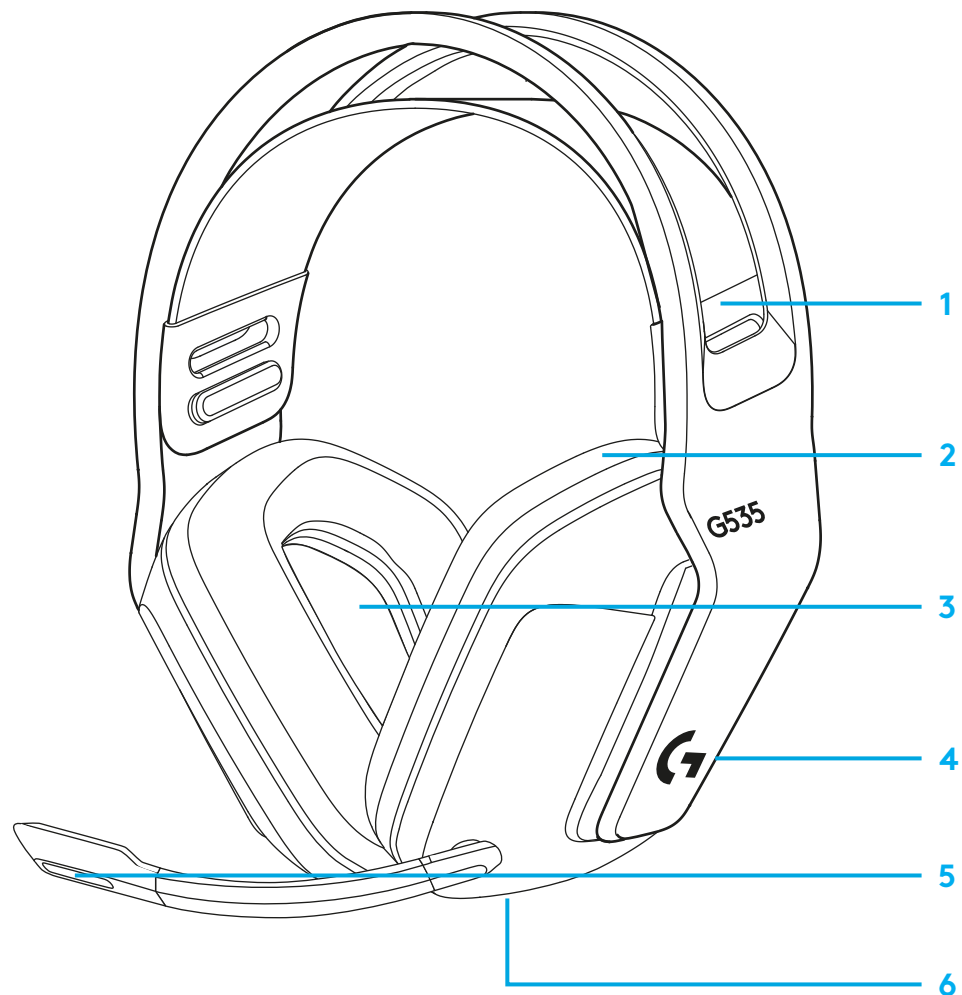


- Įkraukite ausines, kai akumuliatorius išsekęs.



## FUNKCIJOS

- 1 Reguliuojama, apgręžiama juosta
- 2 Prisitaikančios ausinių pagalvėlės
- 3 40 mm keitliai
- 4 Garsumo valdiklis ant ausinės
- 5 Nutildomas 6 mm mikrofonas
- 6 USB-C įkrovimo jungtis

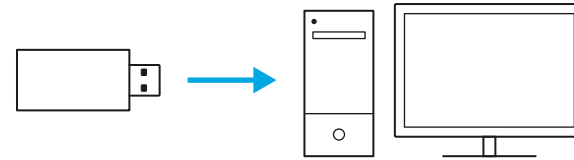


## DAŽNIAUSIAI UŽDUODAMI KLAUSIMAI

[www.logitechG.com/support/G535](http://www.logitechG.com/support/G535)

## ИНСТРУКЦИИ ЗА СВЪРЗВАНЕ

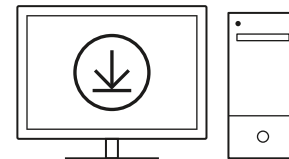
- Включете приемника в USB порта на компютъра ви.



- Натиснете за кратко, за да ВКЛЮЧИТЕ.

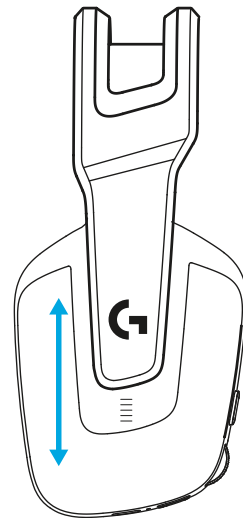


- (Като опция) Изтеглете софтуера Logitech G HUB за достъп до разширени функции. Изтеглете от [logitechG.com/GHUB](https://logitechG.com/GHUB).

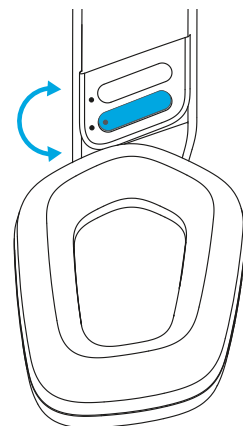


[logitechG.com/ghub](https://logitechG.com/ghub)

- Тапите за уши могат да се настройват в посока нагоре и надолу.

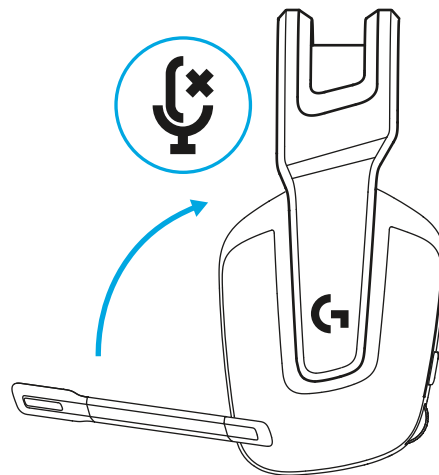


- Дължината на лентата за глава може да бъде настроена.

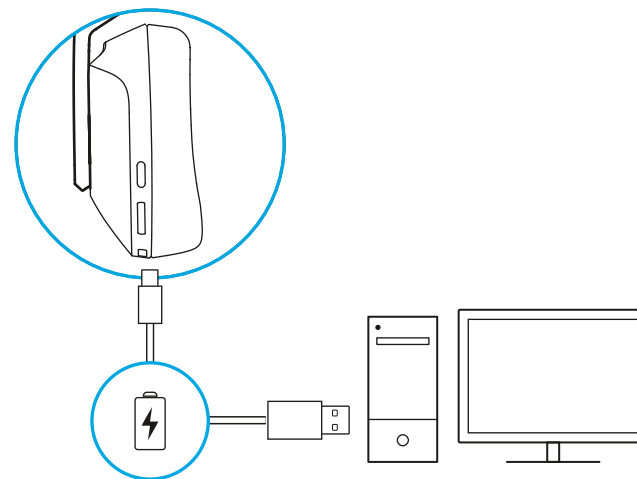




- Обърнете стойката нагоре за изключване на звука.

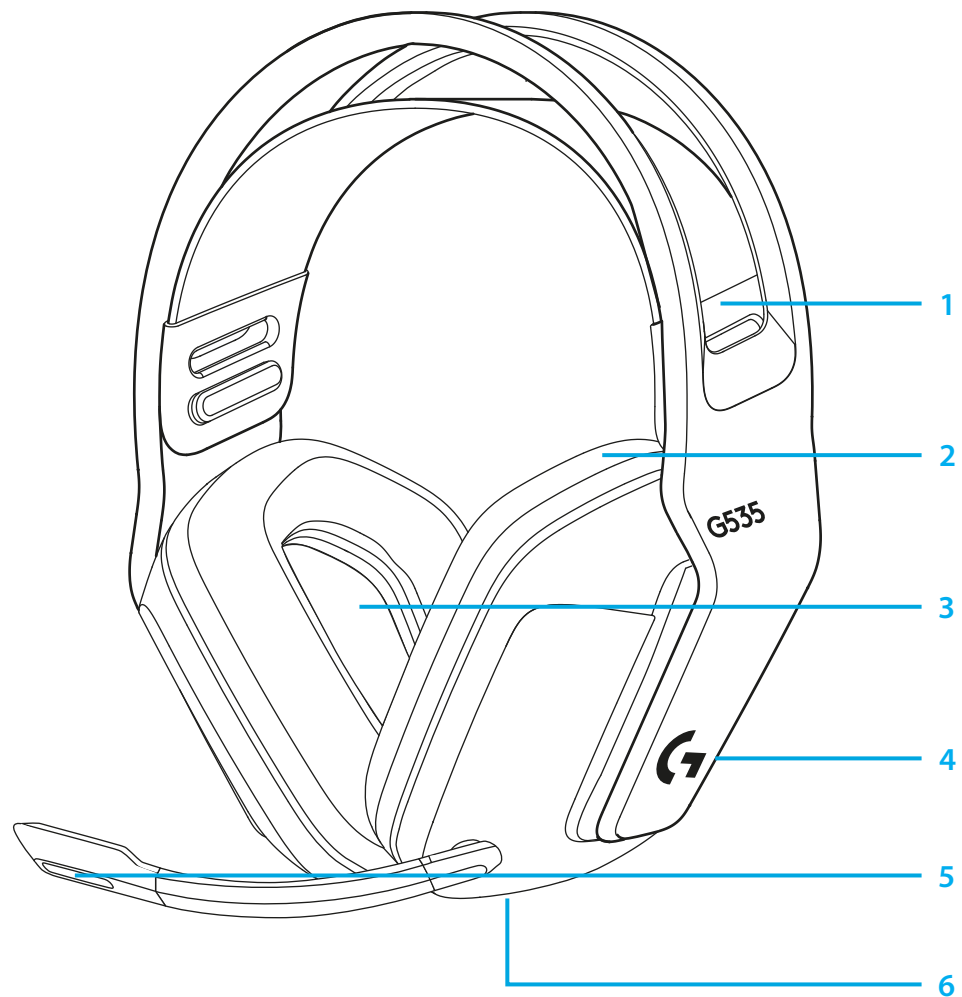


- Когато слушалките се изтощат, ги заредете.



## ХАРАКТЕРИСТИКИ

- 1 Регулируема лента с двулицево окачване
- 2 Чашки за ухо от мемори пiana
- 3 40 мм централни конзоли
- 4 Бутони за управление от ушите на силата на звука
- 5 6 мм микрофон със завъртане за спиране на звука
- 6 USB C порт за зареждане

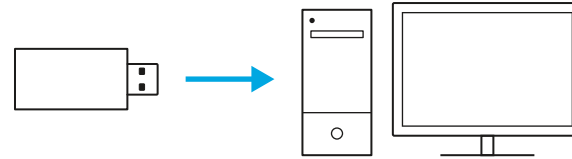


## ЧЕСТО ЗАДАВАНИ ВЪПРОСИ

[www.logitechG.com/support/G535](http://www.logitechG.com/support/G535)

## UPUTE ZA POSTAVLJANJE

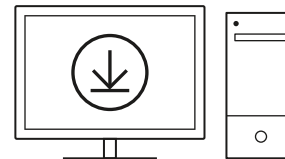
- Utaknite prijemnik u USB priključak računala.



- Nakratko pritisnite za UKLJUČIVANJE.

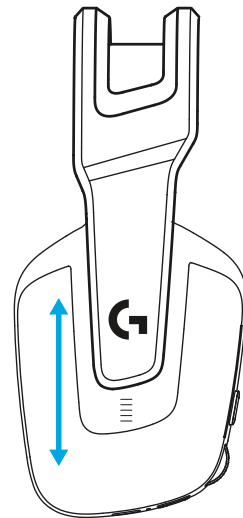


- (Opcija) Preuzmite Logitech G HUB softver za pristup naprednim značajkama. Preuzmite na adresi [logitechG.com/ghub](https://logitechG.com/ghub)

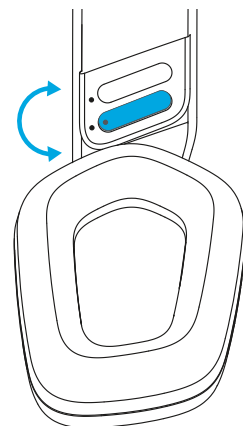


[logitechG.com/ghub](https://logitechG.com/ghub)

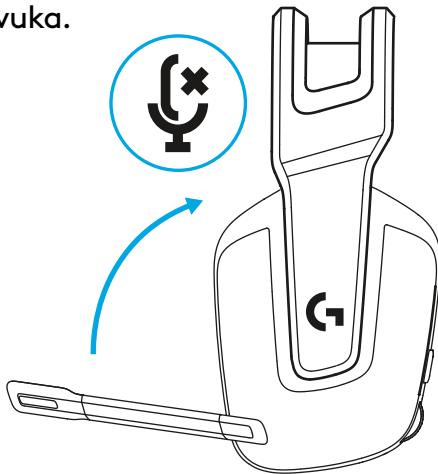
- Školjke se mogu podešavati prema gore i prema dolje.



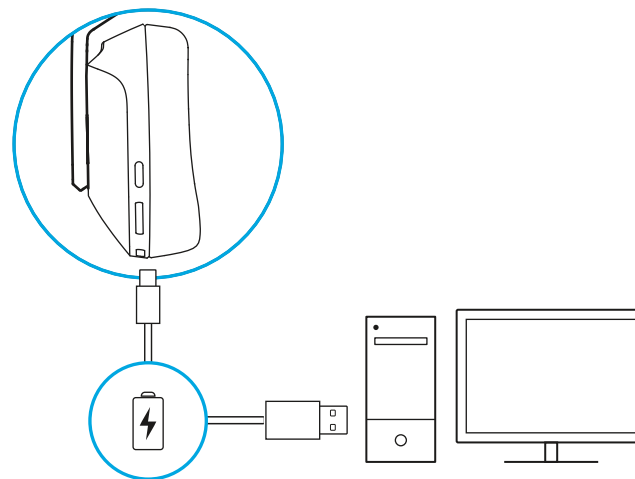
- Duljina držača za glavu može se prilagoditi.



- Okrenite nosač mikrofona prema gore za isključivanje zvuka.

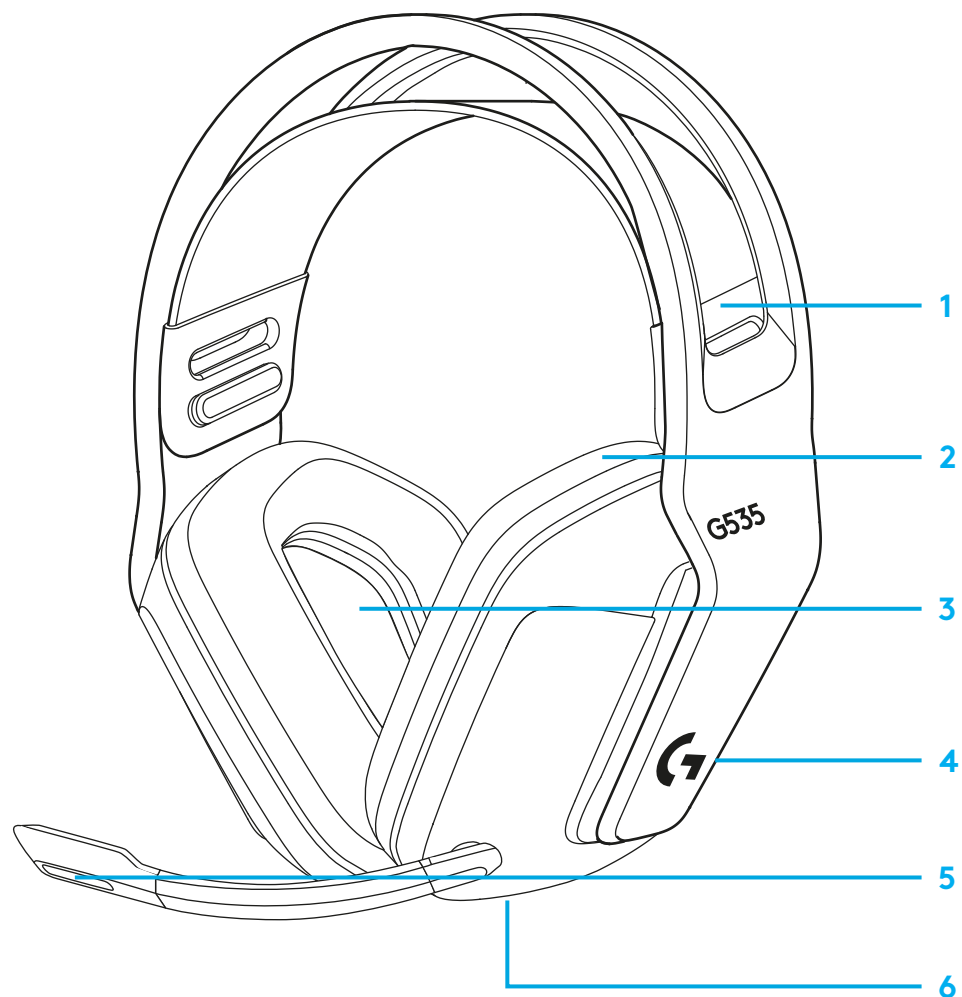


- Napunite slušalice kada je baterija prazna.



## ZNAČAJKE

- 1 Prilagodljiva, reverzibilna ovjesna traka
- 2 Jastučići za uši od memorijske pjene
- 3 Zvučnici od 40 mm
- 4 Regulator glasnoće na slušalicama
- 5 Mikrofon od 6 mm koji se utišava preokretanjem
- 6 USB-C priključak za punjenje

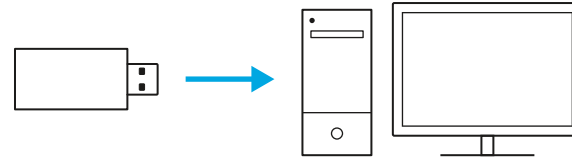


## ČESTA PITANJA

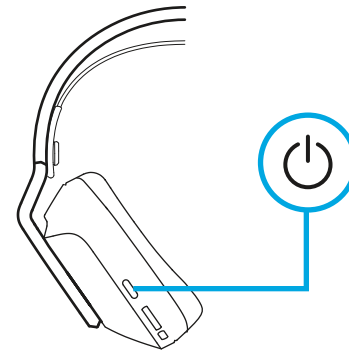
[www.logitechG.com/support/G535](http://www.logitechG.com/support/G535)

# UPUTSTVA ZA PODEŠAVANJE

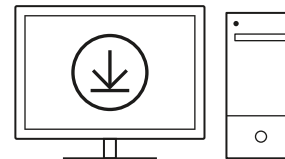
- Umetnite prijemnik u USB port na računaru.



- Kratko pritisnite da biste UKLJUČILI uređaj.

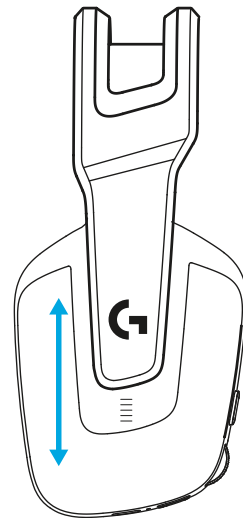


- (Opciono) Preuzmite softver Logitech G HUB da biste pristupili naprednim funkcijama. Preuzmite na [logitechG.com/ghub](https://logitechG.com/ghub)

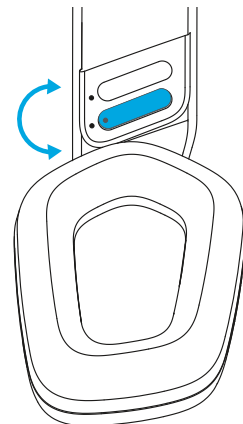


[logitechG.com/ghub](https://logitechG.com/ghub)

- Školjke slušalica se mogu podešavati naviše i naniže.

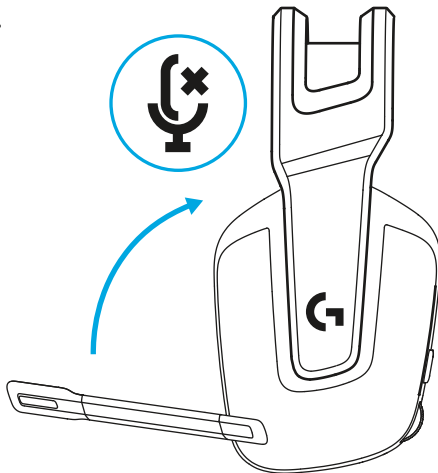


- Dužina držača za glavu se može podešavati.

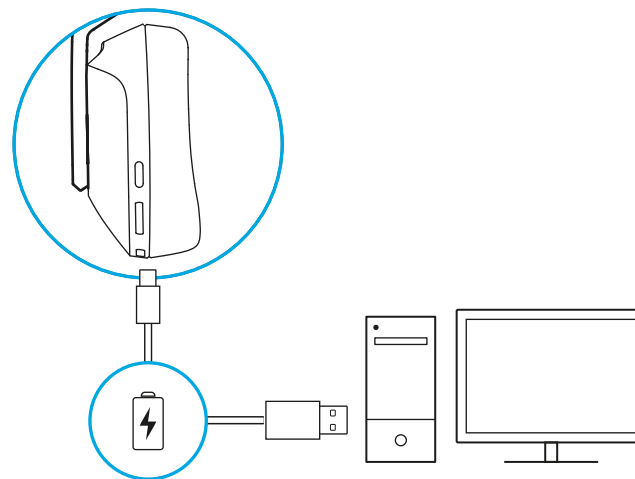




- Okrenite držač mikrofona nagore da biste isključili zvuk.

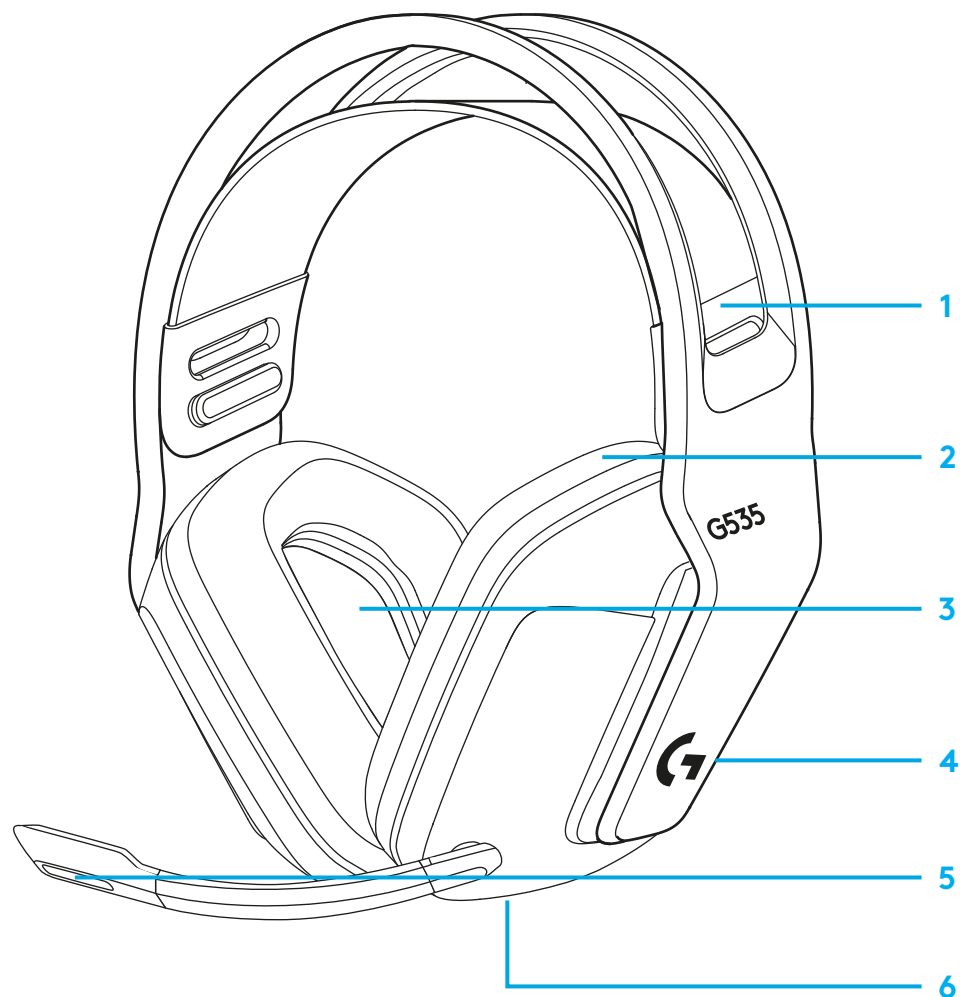


- Napunite slušalice kada je nizak nivo baterije.



## FUNKCIJE

- 1 Podesiva i zamenjiva traka za glavu
- 2 Jastučići za slušalice od memorijske pene
- 3 Drajveri od 40 mm
- 4 Kontrola jačine zvuka na slušalici
- 5 Mikrofon od 6 mm sa funkcijom isključivanja zvuka okretanjem
- 6 USB-C port za punjenje

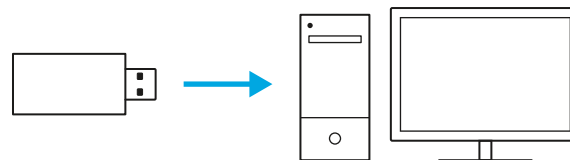


## NAJČEŠĆA PITANJA

[www.logitechG.com/support/G535](http://www.logitechG.com/support/G535)

# NAVODILA ZA NAMESTITEV

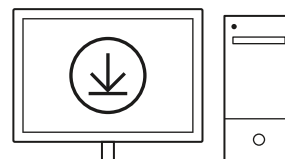
- Vstavite sprejemnik v USB priključek vašega računalnika.



- Kratko pritisnite za VKLJUČITEV.

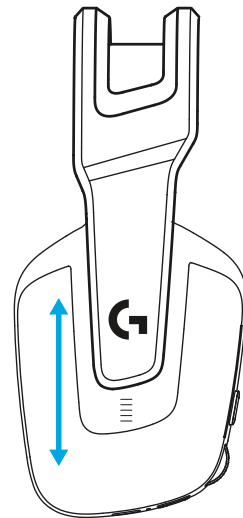


- (Izbirno) Prenesite programsko opremo Logitech G HUB za dostop do naprednih funkcij. Prenesite z naslova [logitechG.com/ GHUB](https://logitechG.com/GHUB).

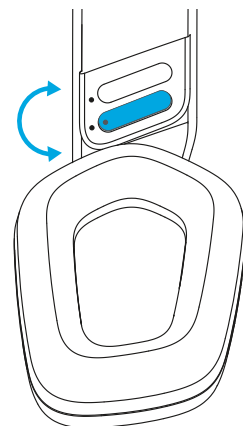


[logitechG.com/ghub](https://logitechG.com/ghub)

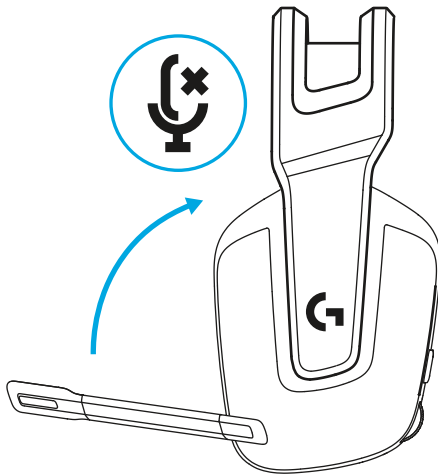
- Ušesni skodelici lahko prilagodite navzgor in navzdol.



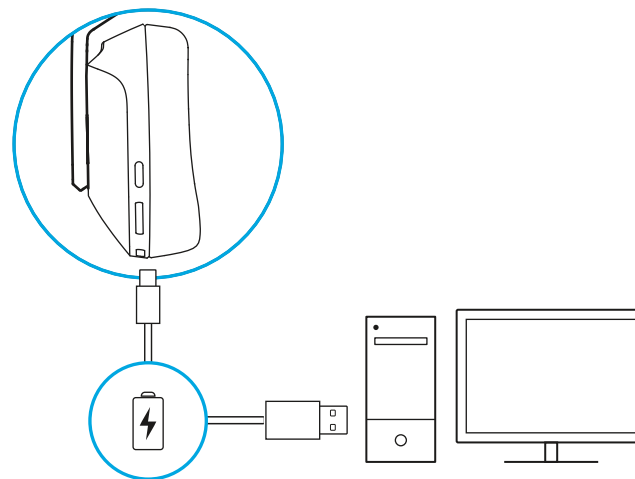
- Nastavite lahko dolžino naglavnega traku.



- Za utišanje preklopite držalo mikrofona.

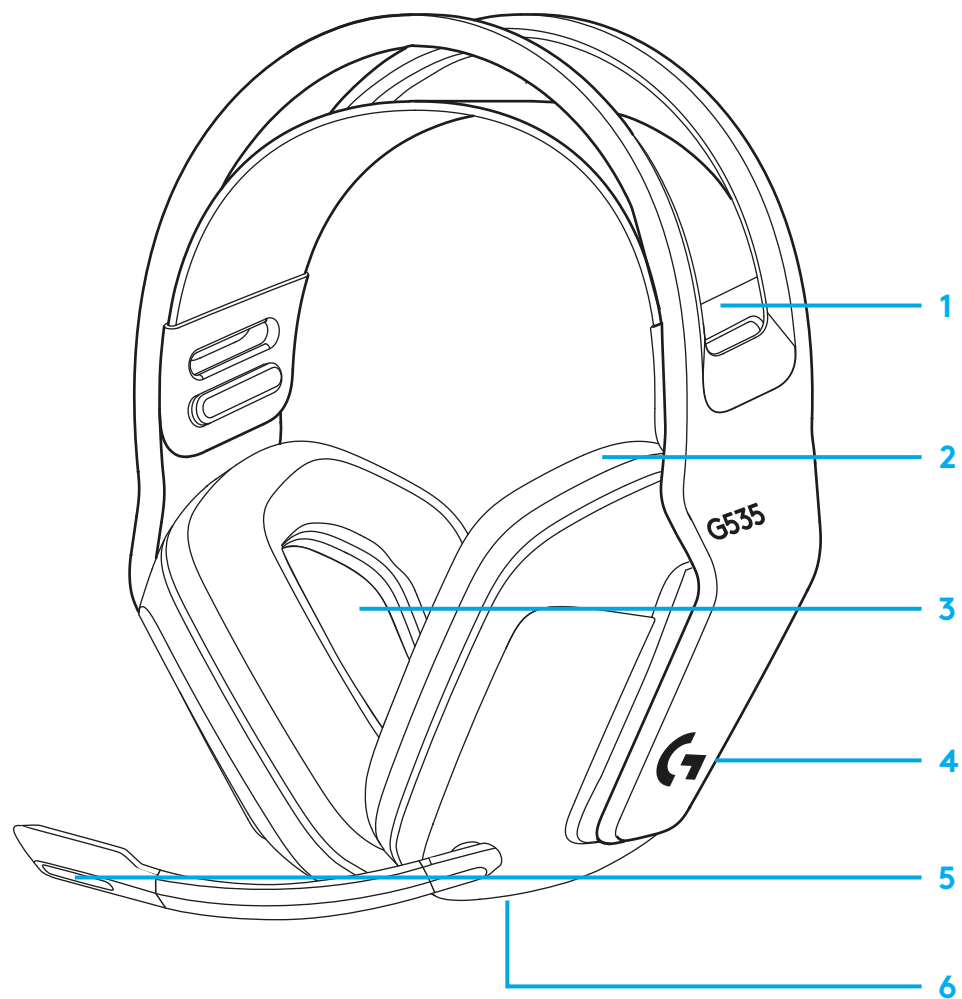


- Slušalke napolnite, ko je baterija izpraznjena.



## FUNKCIJE

- 1 Nastavljiv, obrnljiv raztezni trak
- 2 Ušesne blazinice s spominsko peno
- 3 40-milimetrska zvočnika
- 4 Nastavitev glasnosti na ušesu
- 5 6-milimetrski mikrofonski preklopni utišanje
- 6 Vrata za polnjenje USB C

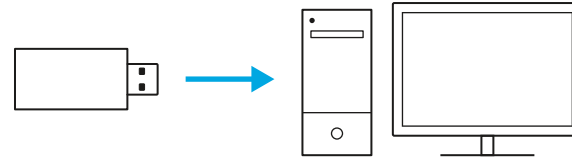


## POGOSTA VPRAŠANJA

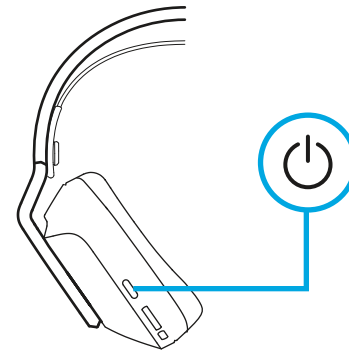
[www.logitechG.com/support/G535](http://www.logitechG.com/support/G535)

# INSTRUCȚIUNI DE CONFIGURARE

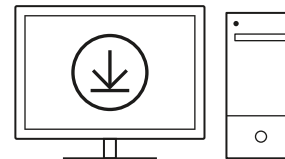
- Introduceți receiverul în portul USB al computerului dvs.



- Apăsați scurt pentru PORNIRE.

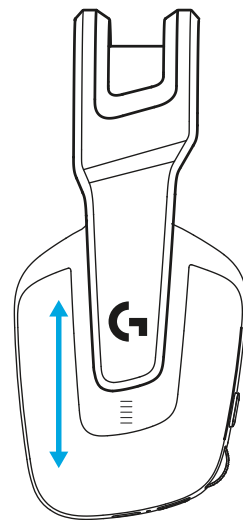


- (Opțional) Pentru a accesa funcțiile avansate, descărcați software-ul G HUB de la Logitech. Descărcați accesând [logitechG.com/ghub](https://logitechG.com/ghub).

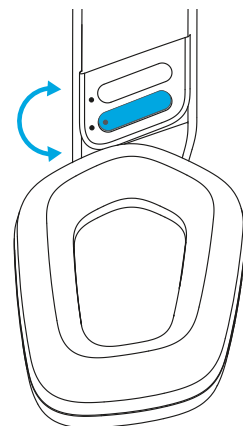


[logitechG.com/ghub](https://logitechG.com/ghub)

- Suporturile de căști din jurul urechii pot fi reglate în sus și în jos.

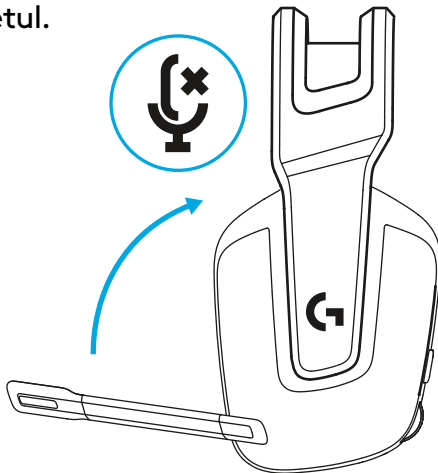


- Lungimea benzii poate fi reglată.

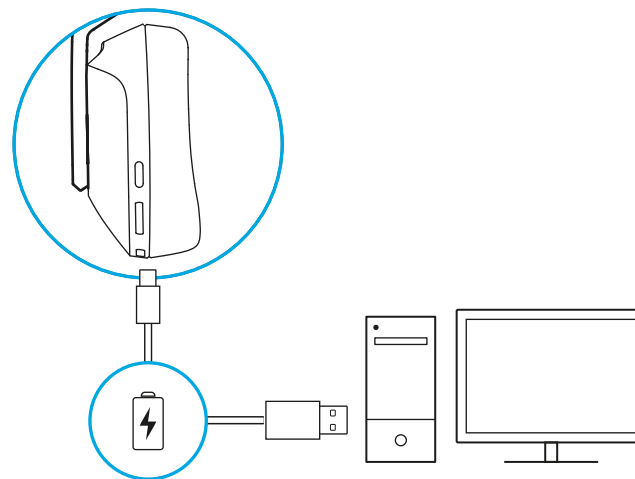




- Rotiți în sus brațul microfonului pentru a dezactiva sunetul.

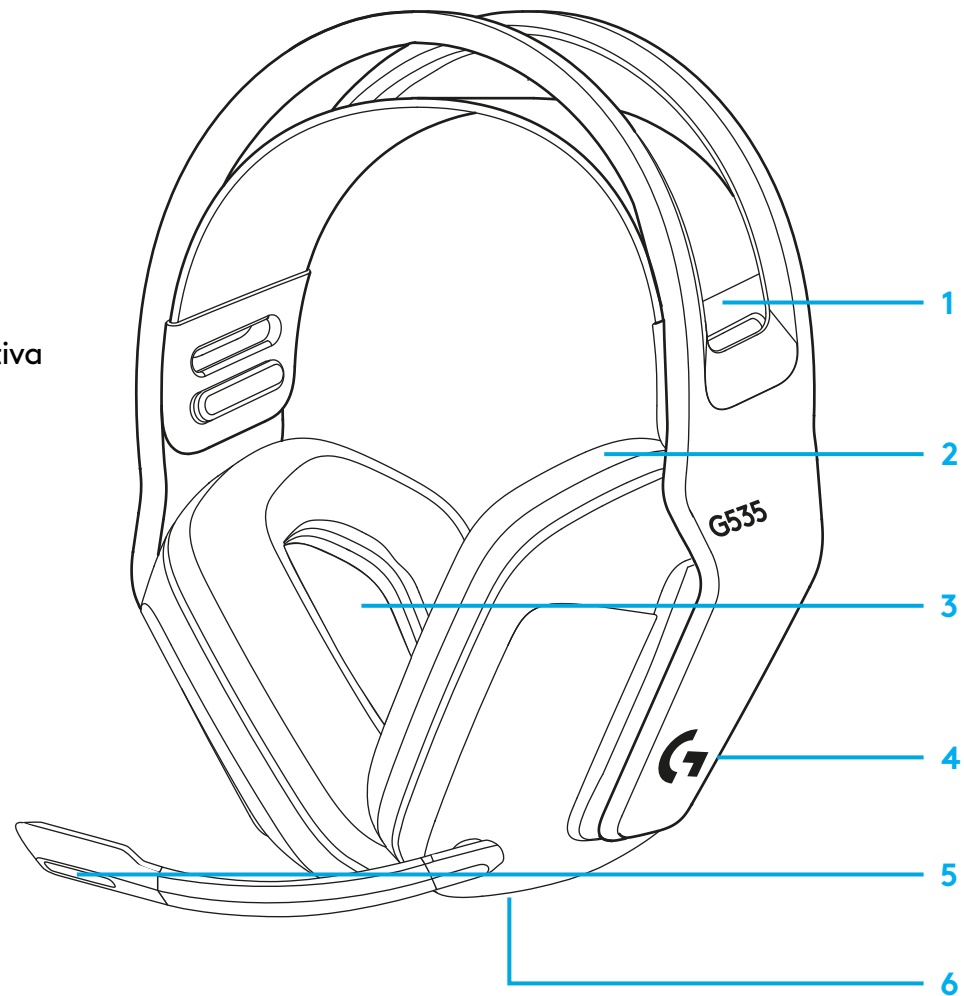


- Încărcați căștile când nivelul bateriei este scăzut.



## CARACTERISTICI

- 1 Bandă ajustabilă de suspensie, reversibilă
- 2 Suporturi de urechi din spumă cu memorie
- 3 Difuzoare de 40 mm
- 4 Control volum de pe cască
- 5 Microfon de 6 mm, ce poate fi rotit pentru a-l dezactiva
- 6 Port de încărcare USB-C

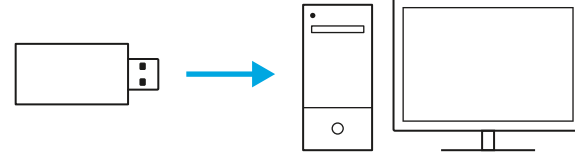


## ÎNTREBĂRI FRECVENTE

[www.logitechG.com/support/G535](http://www.logitechG.com/support/G535)

# KURULUM YÖNERGELERİ

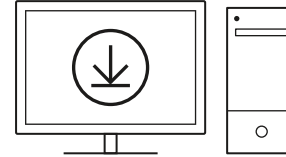
- Alıcıyı bilgisayarınızın USB bağlantı noktasına takın.



- Açmak için kısa basın.

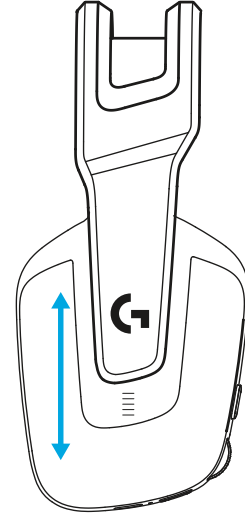


- (İsteğe bağlı) Gelişmiş özelliklere erişmek için Logitech G HUB yazılımını indirin. [logitechG.com/ghub](https://logitechG.com/ghub) adresinden indirin

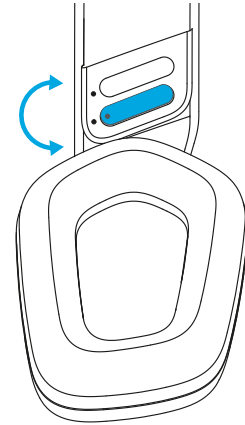


[logitechG.com/ghub](https://logitechG.com/ghub)

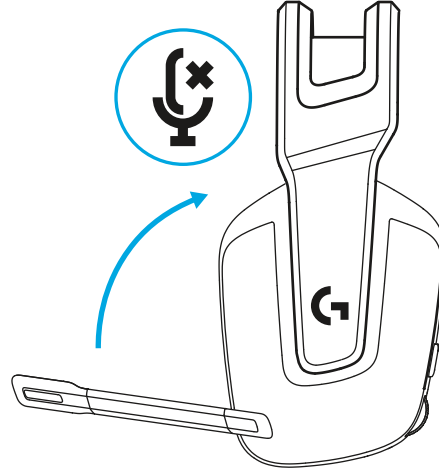
- Kulaklıklar yukarı ve aşağı ayarlanabilir.



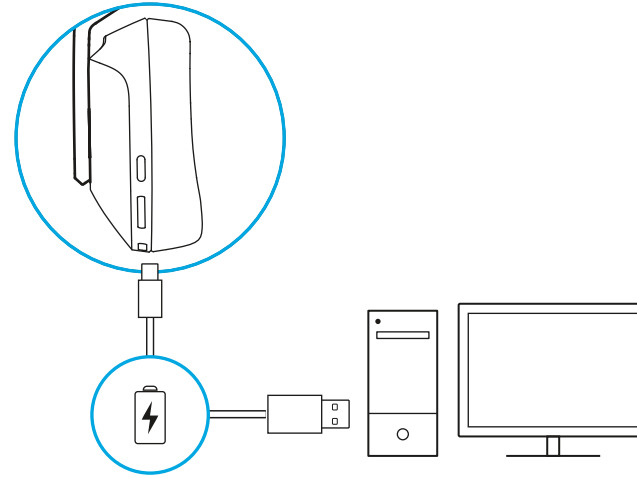
- Başlığın uzunluğu ayarlanabilir.



- Mikrofon kolunu yukarı döndürerek sesi kapatın.

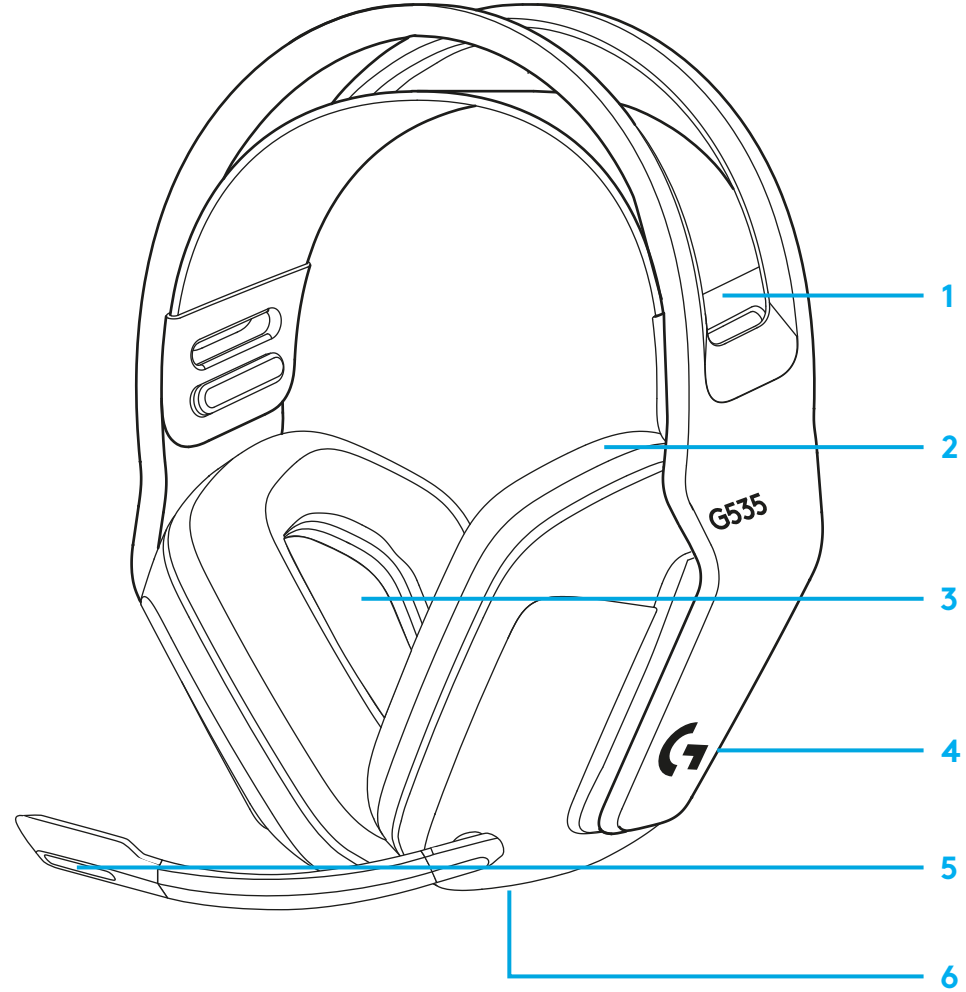


- Pili azaldığında kulaklığı şarj edin.



## ÖZELLİKLER

- 1 Ayarlanabilir, ters çevrilebilir süspansiyonlu kayış
- 2 Hafızalı köpükten kulaklık süngerleri
- 3 40 mm'lik sürücüler
- 4 Kulak üzeri ses düzeyi kontrolü
- 5 6 mm katlanarak sessize alınan mikrofon
- 6 USB-C şarj bağlantı noktası

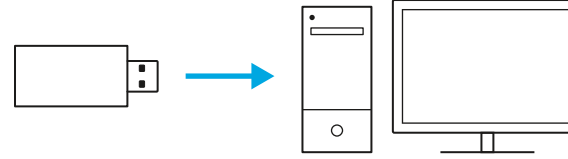


## SIKÇA SORULAN SORULAR

[www.logitechG.com/support/G535](http://www.logitechG.com/support/G535)

## إرشادات الإعداد

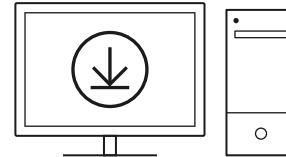
– أدخل جهاز الاستقبال في منفذ USB بجهاز الكمبيوتر.



– اضغط لفترة قصيرة لتشغيل.

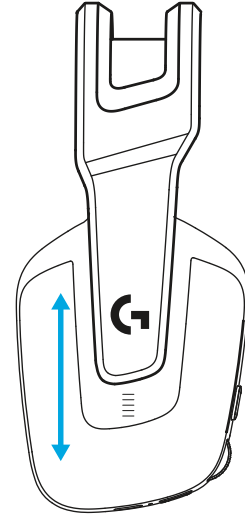


– (اختياري) قم بتنزيل برنامج Logitech G HUB للوصول إلى الميزات المتقدمة. التنزيل من خلال [LogitechG.com/GHUB](https://LogitechG.com/GHUB)

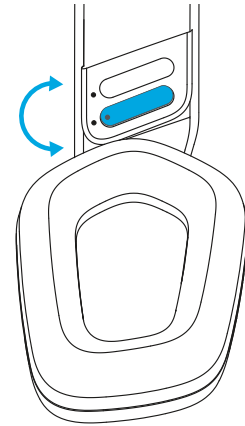


[logitechG.com/ghub](https://logitechG.com/ghub)

– يمكن تعديل وسادات الأذن لأعلى ولأسفل.

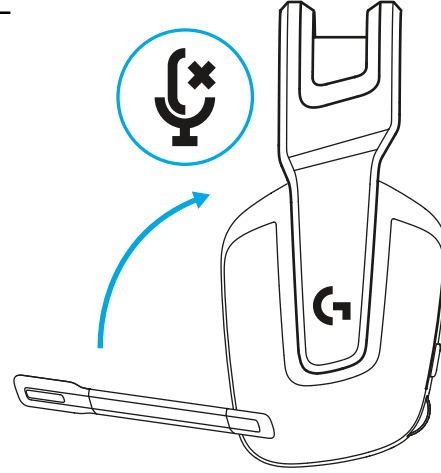


– يمكن تعديل طول عصابة الرأس.

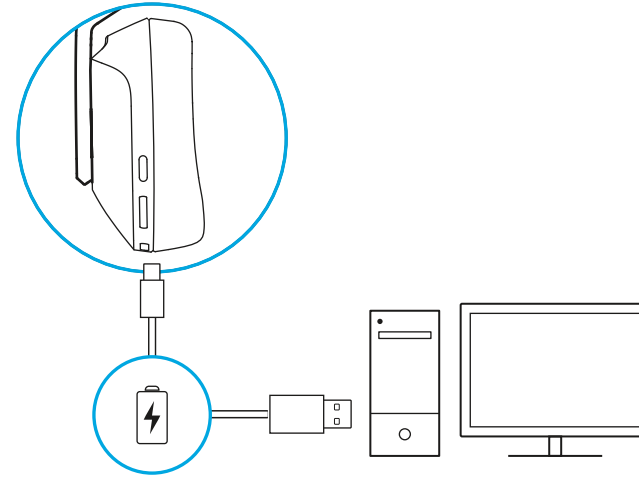




– اقلب الذراع لكتم الصوت.

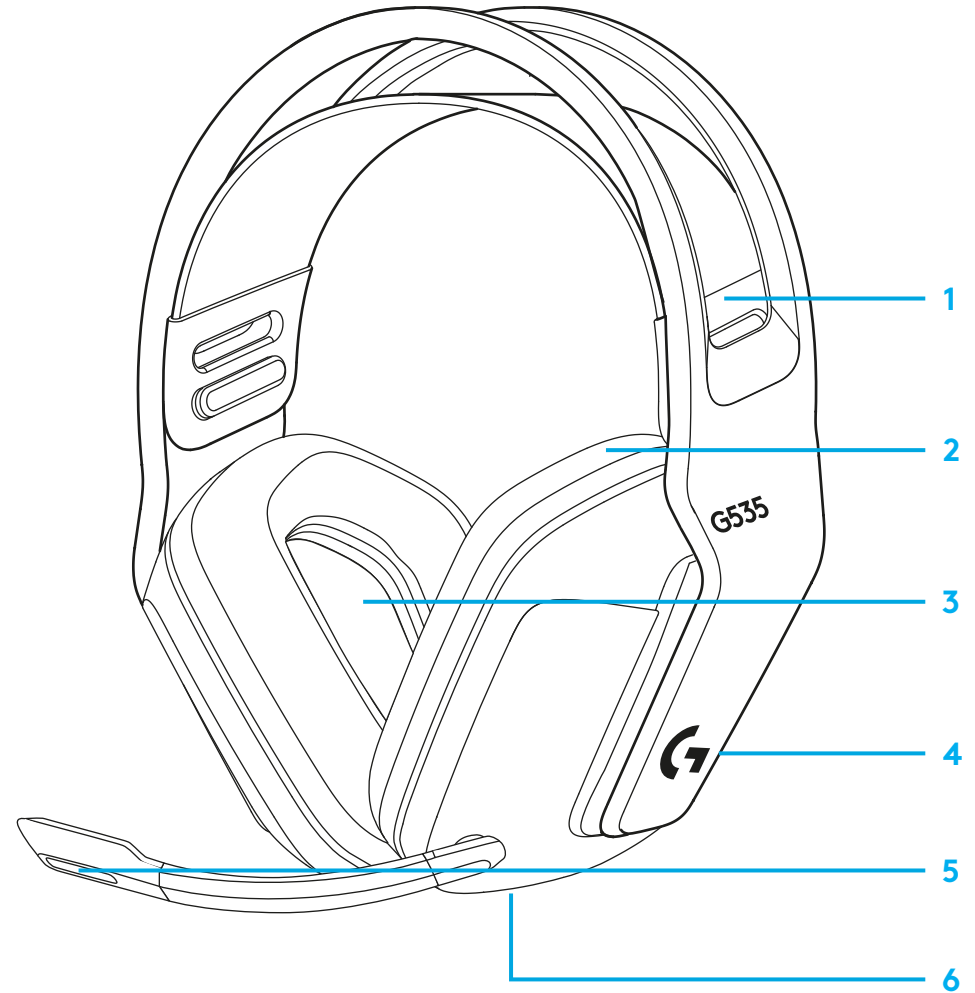


– شحن سماعة الرأس عندما تكون البطارية منخفضة.



## الميزات

- 1 طوق تعليق قابل للتعديل وقابل للانعكاس
- 2 بطانات أذن إسفنجية لينة
- 3 مشغلات ٤٠ ملم
- 4 التحكم في مستوى الصوت في الأذن
- 5 ميكروفون بحجم ٦ مم قابل لكتم الصوت
- 6 منفذ شحن USB-C

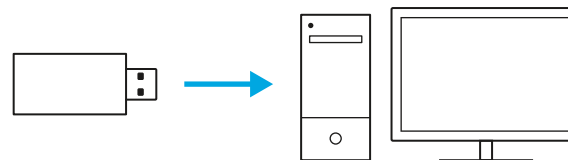


## الأسئلة المتكررة

[www.logitechG.com/support/G535](http://www.logitechG.com/support/G535)

## הוראות התקנה

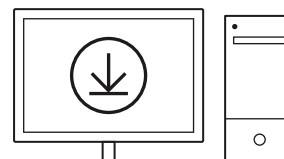
– הכנס מקלט אל יציאת ה-USB במחשב.



– לחיצה קצרה להפעלה.

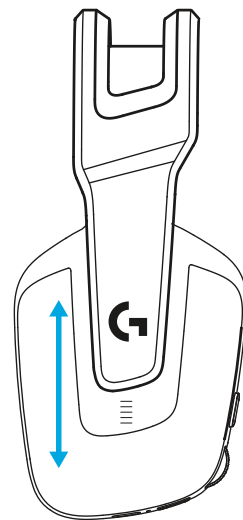


– (אופציונלי) הורד את תוכנת Logitech G HUB לקבלת גישה לתכונות מתקדמות. הורד מהכתובת [logitechG.com/g hub](http://logitechG.com/g hub)

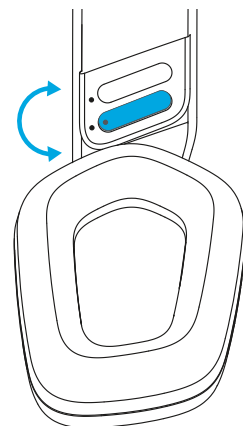


[logitechG.com/g hub](http://logitechG.com/g hub)

– ניתן לכוון את האפרכסות כלפי מעלה ומטה.



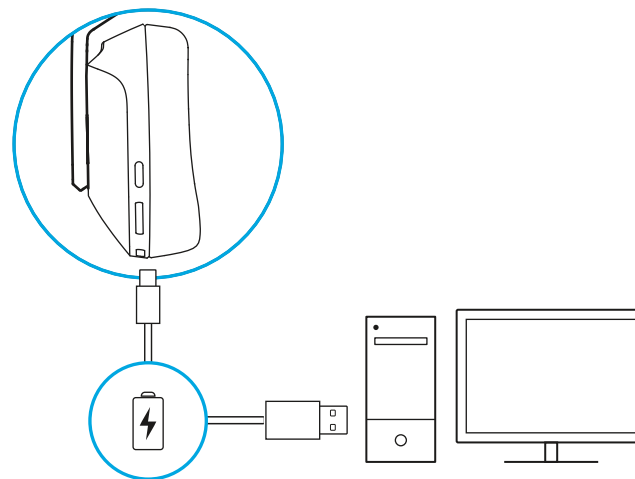
– ניתן לכוון את אורך רצועת הראש.



– הפוך את זרוע המיקרופון כלפי מעלה כדי להשתיק.

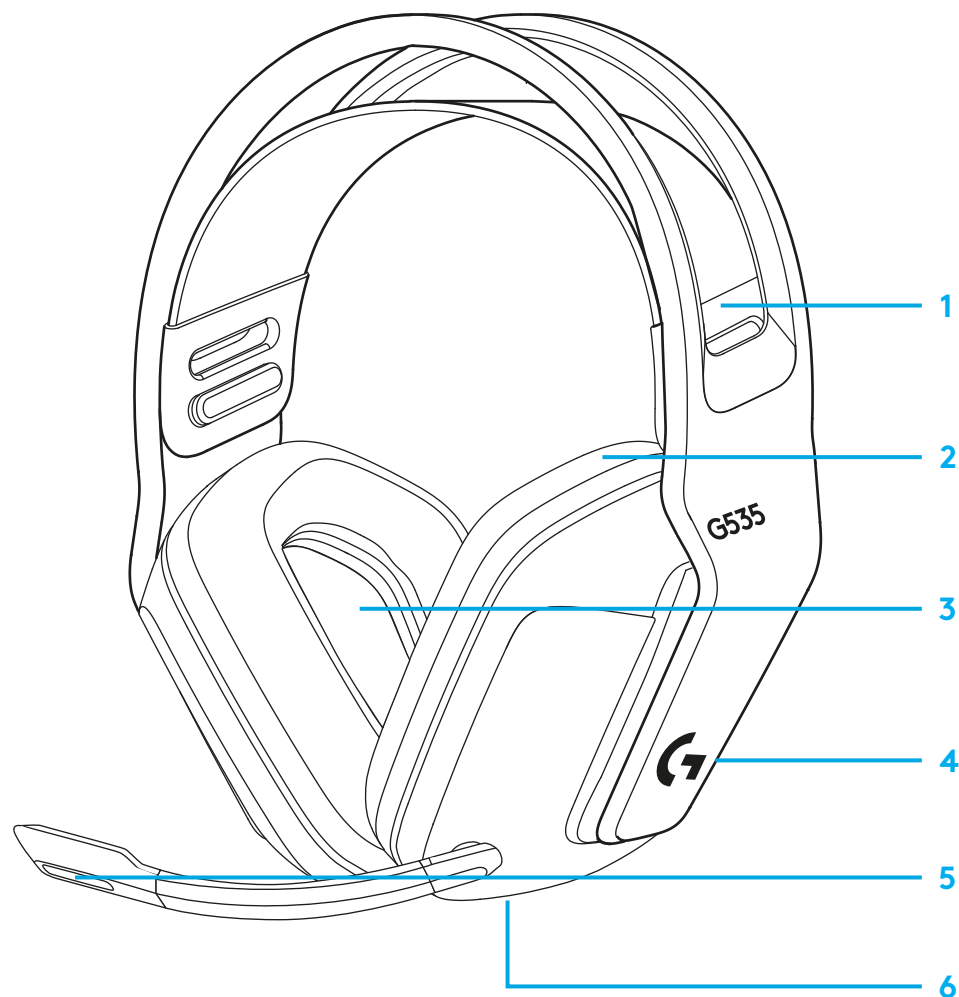


– טען את האוזניות כאשר הסוללה חלשה.



## תכונות

- 1 רצועה מתכווננת, עם מתלה הניתן להחלפה
- 2 אוזניות עם קצף זיכרון
- 3 דרייברים 40 מ"מ
- 4 שליטה על עוצמת הקול בתוך האוזן
- 5 מיקרופון הפוך להשתקה 6 מ"מ
- 6 יציאת טעינה USB-C



## שאלות נפוצות

[www.logitechG.com/support/G535](http://www.logitechG.com/support/G535)



©2022 Logitech. Logitech, Logitech G, Logi and their respective logos are trademarks or registered trademarks of Logitech Europe S.A. and/or its affiliates in the U.S. and other countries. All other trademarks are the property of their respective owners. Logitech assumes no responsibility for any errors that may appear in this manual. Information contained herein is subject to change without notice.

WEB-621-002134 002