

COMBO TOUCH

Setup Guide



logitech®

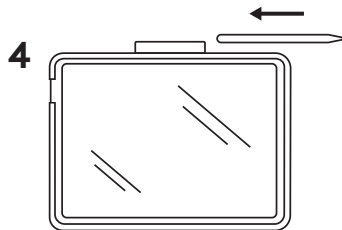
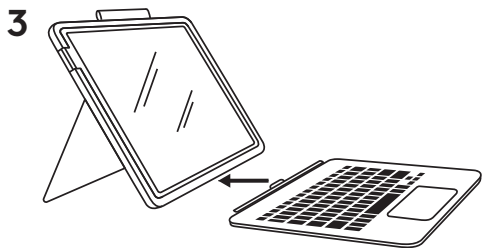
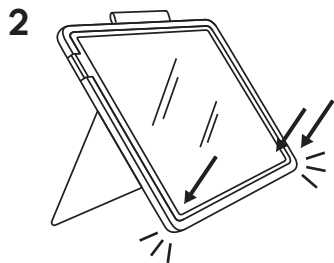
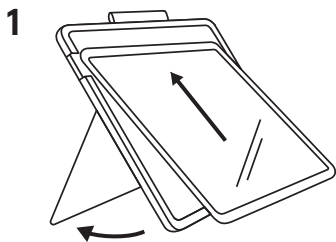
SET UP

한국어

설치

繁體中文

設定



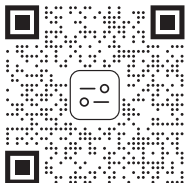
Download to access more features

한국어

더 많은 기능을 이용하려면 다운로드하세요

繁體中文

下載軟體以使用更多功能



[www.logitech.com/
combo-touch-app](http://www.logitech.com/combo-touch-app)



Use of the Made for iPad badge means that an accessory has been designed to connect specifically to the iPad identified in the badge and has been certified by the developer to meet Apple performance standards. Apple is not responsible for the operation of this device or its compliance with safety and regulatory standards. Please note that the use of this accessory with an Apple product may affect wireless performance.

© 2022 Logitech. Logitech, Logi and other Logitech marks are owned by Logitech and may be registered. All other trademarks are the property of their respective owners. Logitech assumes no responsibility for any errors that may appear in this manual. Information contained herein is subject to change without notice.

WEB-621-002300 002