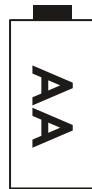
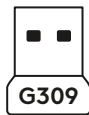
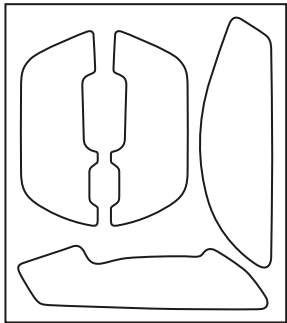
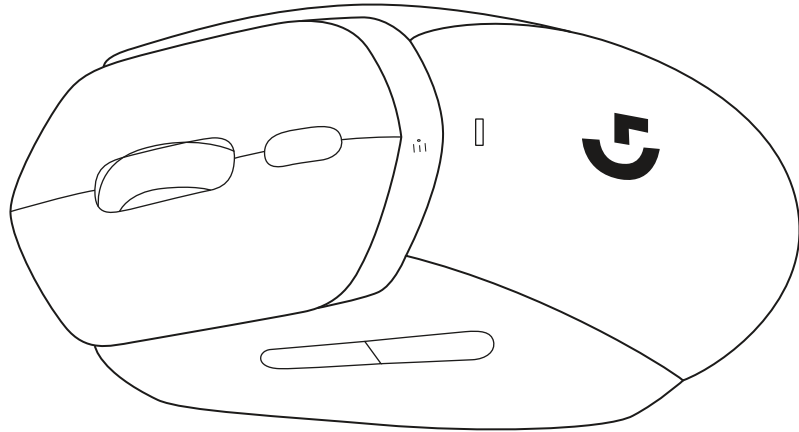


G309 LIGHTSPEED

Wireless Gaming Mouse
无线游戏鼠标

SETUP GUIDE | 设置指南



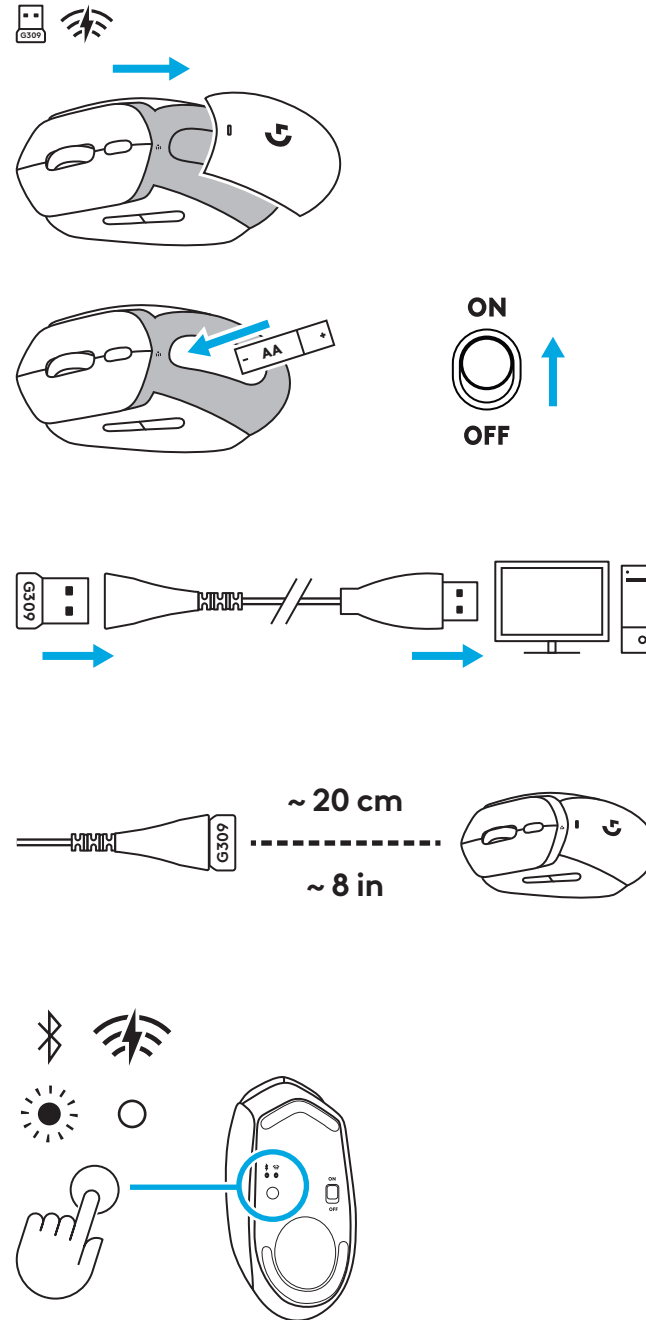


ENGLISH	3
简体中文	9
繁體中文	15
한국어	21

PRODUCT SETUP

LIGHTSPEED connection (with USB receiver)

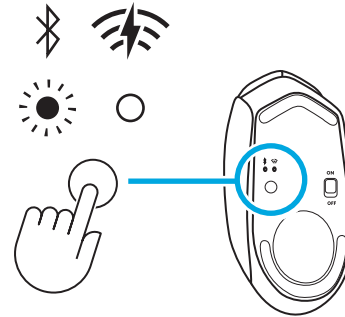
- Remove battery door
- Insert AA battery
- Switch on your G309
- Insert the LIGHTSPEED USB receiver into your computer. Use the included USB extender cable if G309 is further than 20 cm from your computer.
- Optional: if your G309 is in *Bluetooth*® mode short press the button once to cycle to LIGHTSPEED mode.



CONNECTIVITY

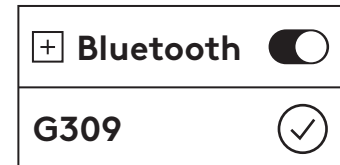
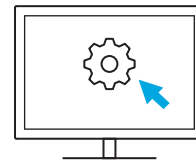
Bluetooth® first connection

- Switch on your G309.
- Single press the button to cycle connectivity to Bluetooth®.
- Go to the Bluetooth® settings on your host device and connect to G309.



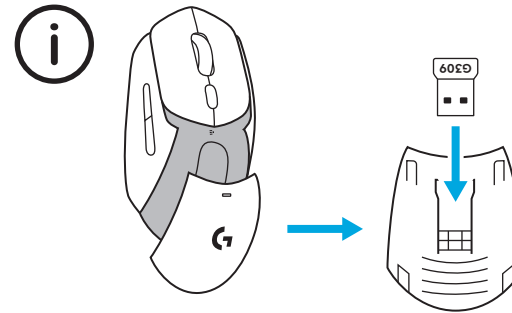
Changing host

- Switch on your G309.
- Single press the button to cycle connectivity to Bluetooth® if not already in Bluetooth® mode.
- Long press the button to begin Bluetooth® pairing.
- Go to the Bluetooth® settings on your host device and connect to G309.



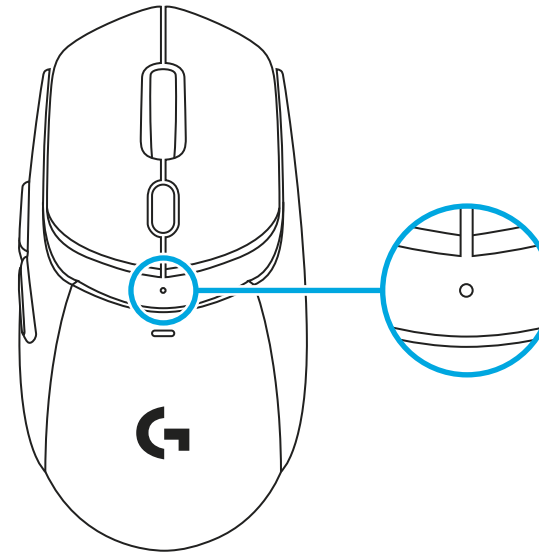
RECEIVER STORAGE

The LIGHTSPEED USB receiver can be stored in the removable battery door.



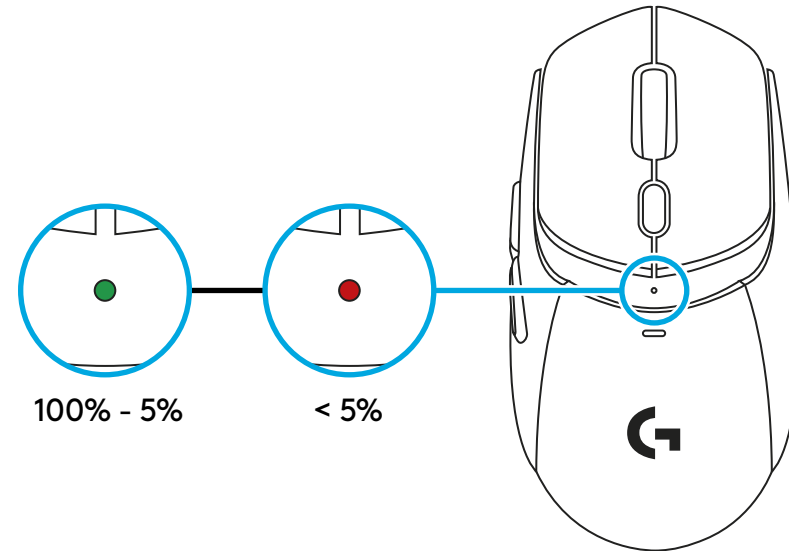
LED FUNCTIONALITY

- The functional LED indicator is located on the top of the mouse.



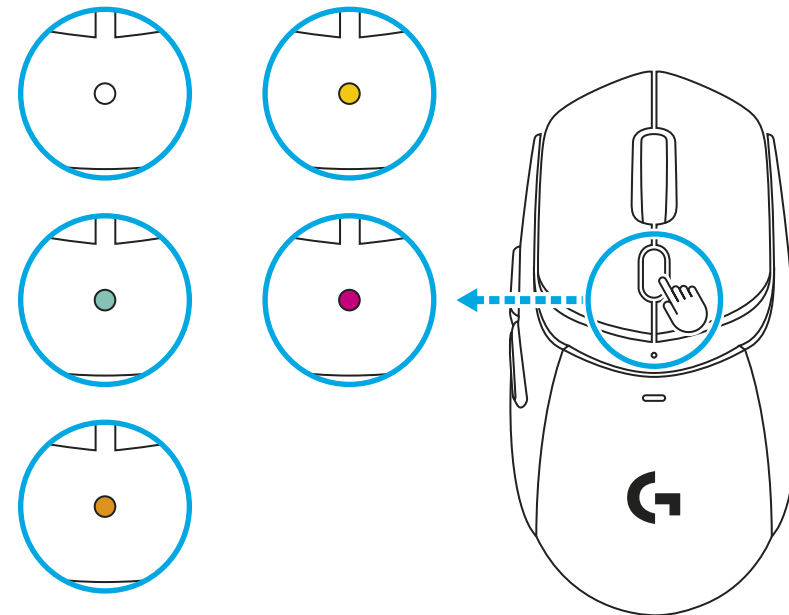
Battery status is shown when waking up the product when in sleep mode and when turning on the device.

- **Green** is displaying the battery status from 100 to 5%
- **Steady Red** and **breathing Red** is displaying the battery status: 5%



Cycling through the sensitivity (DPI) settings

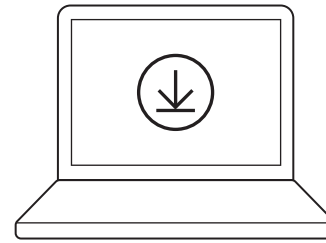
- Pressing on the button below the wheel allows to go through the different settings (out of the box or after being customized through G HUB).
- The different colors displayed on the LED are :
 - 1: **White** is 400 DPI
 - 2: **Orange** is 800 DPI
 - 3: **Teal** is 1200 DPI
 - 4: **Yellow** is 1600 DPI
 - 5: **Magenta** is 2400 DPI



G HUB SOFTWARE

Link to download G HUB

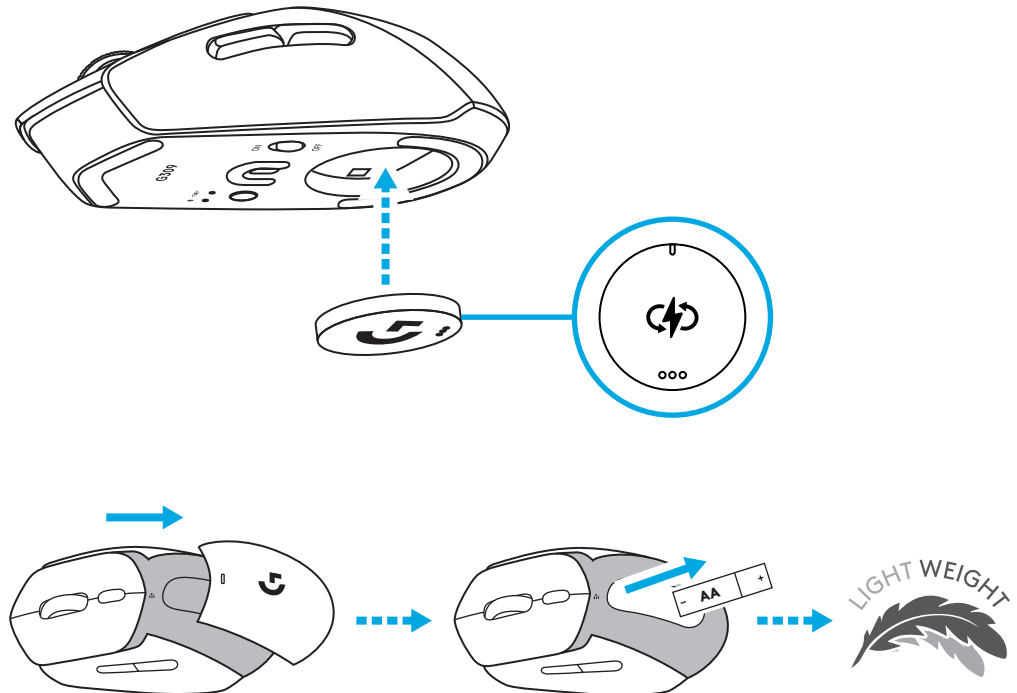
Compatible with : *Windows 10 or later, macOS 12 or later.*



logitechG.com/ghub

G309 WITH POWERPLAY

- 1** Remove the magnetic plastic disc from the bottom of your G309.
- 2** Magnetically attach the POWERCORE coin (included with POWERPLAY) to the bottom of your G309.
- 3** Follow the instruction of the **POWERPLAY quick start guide**
- 4** Remove the AA battery from the device to allow for a lightweight experience or keep the battery (remove the AA battery from the device while paired with POWERPLAY for a lightweight 68g).

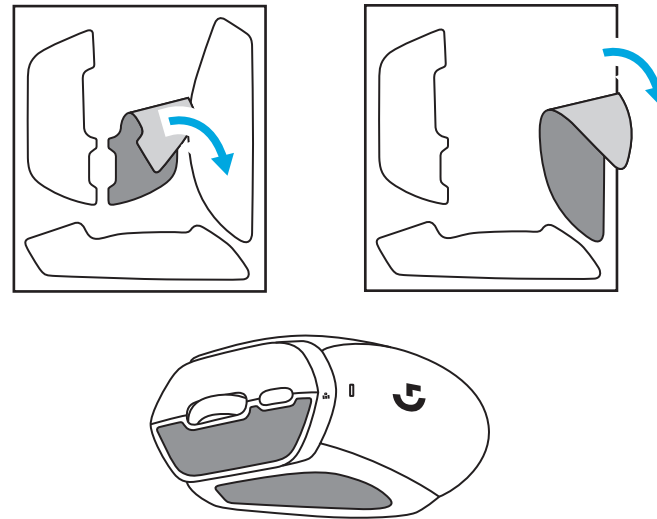


- 5** When the AA battery is absent from the device:
- The mouse is instantly functional when placed on POWERPLAY.
 - It may take up to 2 minutes to fully charge the super capacitor.
 - If the G309 is removed from POWERPLAY, the mouse will be functional for a few minutes.

GRIP TAPE

Clean the surface of the mouse with a cloth.

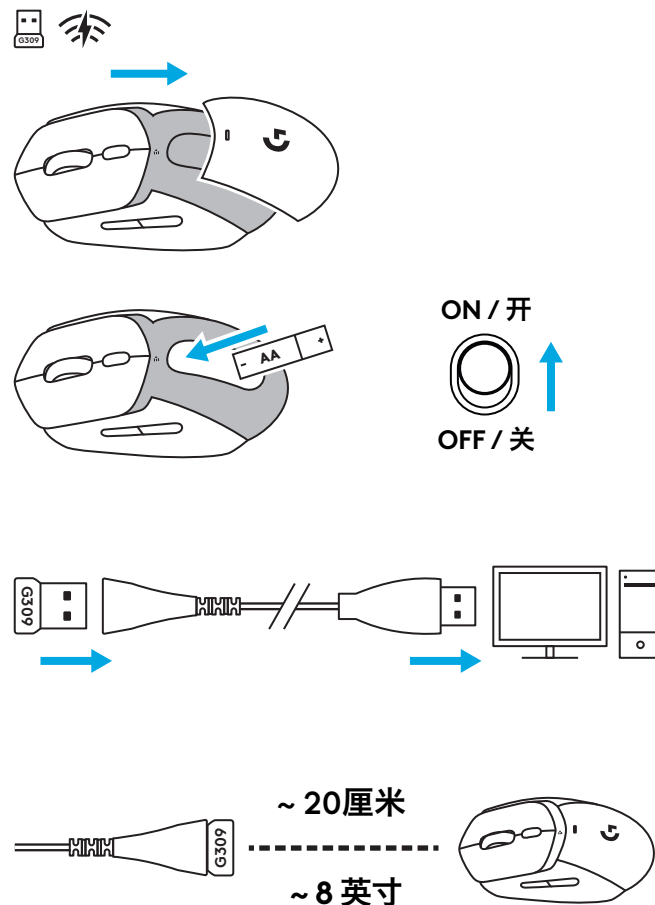
Apply the grips on the main key plates and the sides of the mouse.



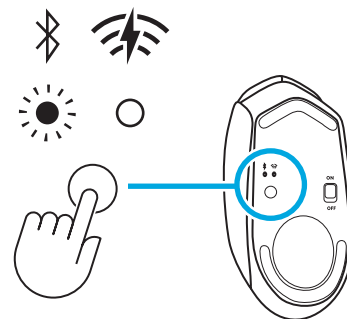
产品设置

LIGHTSPEED 连接 (带 USB 接收器)

- 卸下电池盖
- 装入 AA 电池
- 打开 G309
- 将 LIGHTSPEED USB 接收器插入电脑。
如果 G309 距离电脑超过 20 厘米, 请使用
随附的 USB 延长线。



- 可选: 如果您的 G309 处于蓝牙™ 模式, 短按按钮
一次即可切换到 LIGHTSPEED 模式。



连接

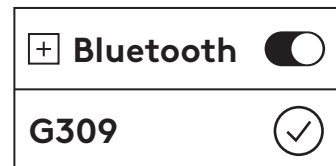
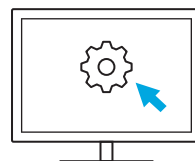
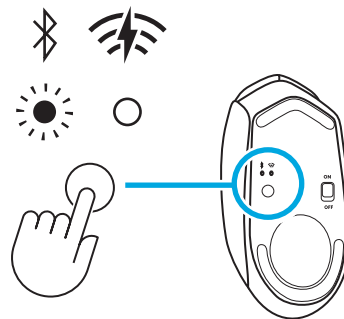
蓝牙™ 首次连接

- 打开 G309。
- 单击按钮可循环连接至蓝牙™。
- 进入主机设备上的蓝牙™ 设置并连接 G309。



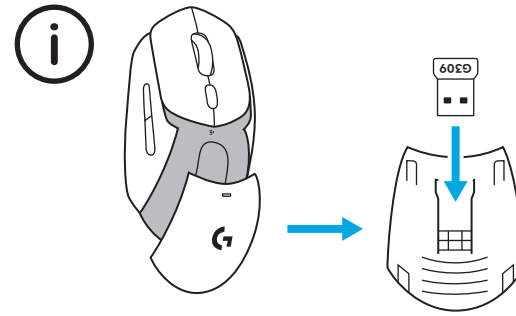
更换主机

- 打开 G309。
- 如果尚未进入蓝牙™ 模式，单击按钮可将连接功能切换到蓝牙™。
- 长按按钮开始蓝牙™ 配对。
- 进入主机设备上的蓝牙™ 设置并连接到 G309。



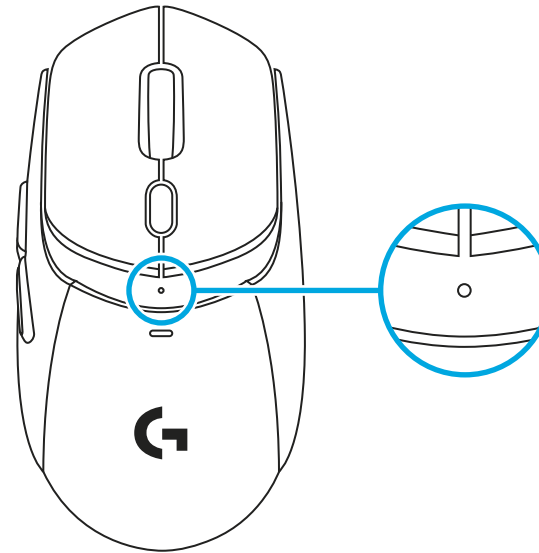
接收器收纳

LIGHTSPEED USB 接收器可存放在可拆卸电池盖中。



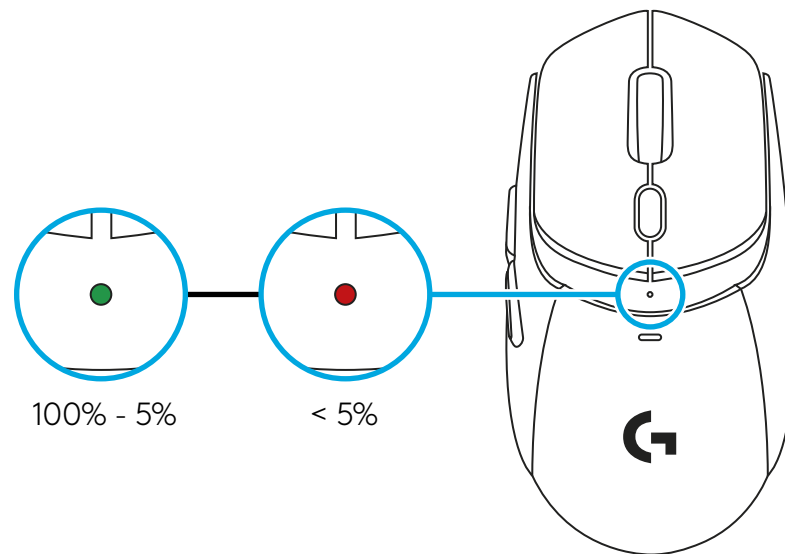
LED 功能

- LED 功能指示灯位于鼠标顶部。



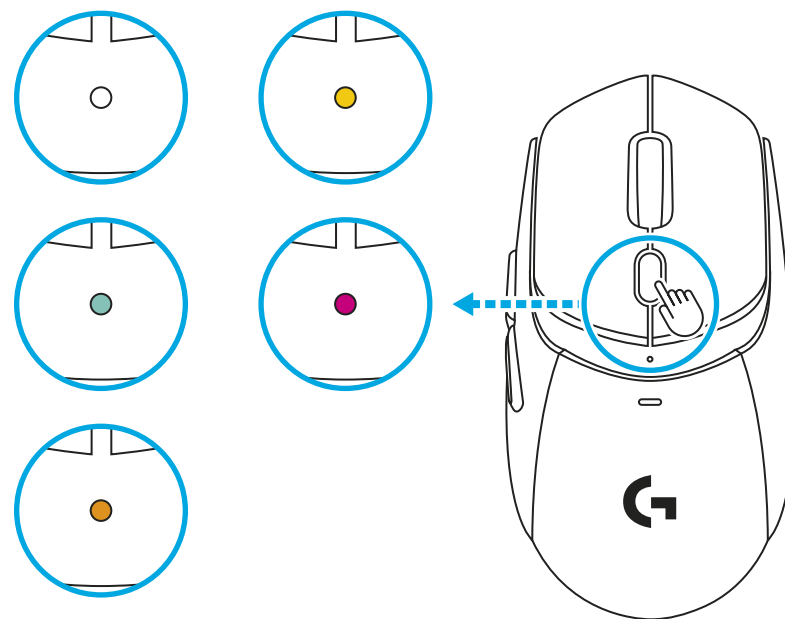
在睡眠模式下唤醒产品和打开设备时都会显示电池状态。

- 绿色显示电池电量状态 (100% 至 5%)。
- 常亮红色和呼吸红色显示电池状态: 5%



循环灵敏度 (DPI) 设置

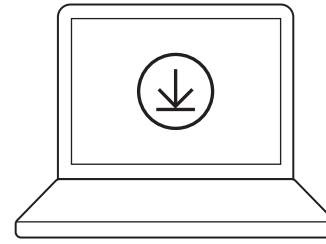
- 按下滚轮下方的按钮, 可以进行不同的设置 (开箱即用或通过 G HUB 自定义后)。
- LED 上显示的不同颜色含义:
 - 1: 白色为 400 DPI
 - 2: 橙色为 800 DPI
 - 3: 青绿色为 1200 DPI
 - 4: 黄色为 1600 DPI
 - 5: 品红色为 2400 DPI



G HUB 软件

下载 G HUB 的连接

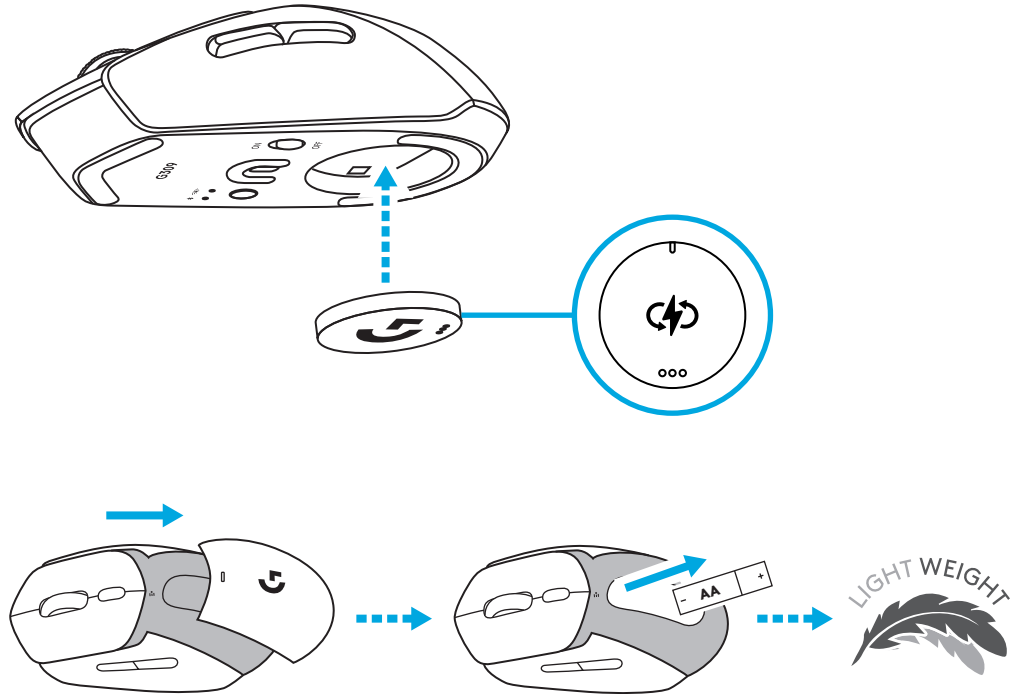
兼容：Windows10 或更高版本, macOS12 或更高版本。



logitechG.com/ghub

G309 与 POWERPLAY 一起使用

- 1 从 G309 底部取出磁性塑料盘。
- 2 用磁力将 POWERCORE 硬币 (随 POWERPLAY 附送) 吸附到 G309 的底部。
- 3 按照 **POWERPLAY 快速入门指南** 的指示操作。
- 4 将 AA 电池从设备中取出, 以获得轻量化体验, 或保留电池 (将 AA 电池从设备中取出, 与 POWERPLAY 配对, 重量仅为约 68 克)。

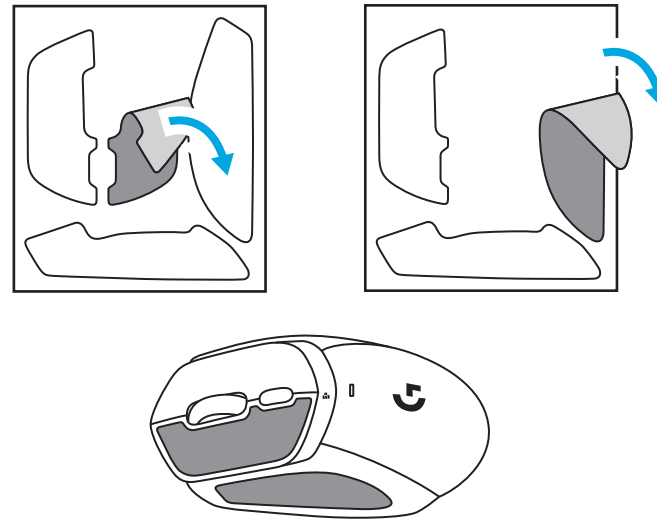


- 5 当设备中没有 AA 电池时:
- 放在 POWERPLAY 上时, 立即就能发挥作用。
 - 超级电容器充满电可能需要 约 2 分钟。
 - 如果将 G309 从 POWERPLAY 中移除, 鼠标可正常工作几分钟。

握胶

用布清洁鼠标表面。

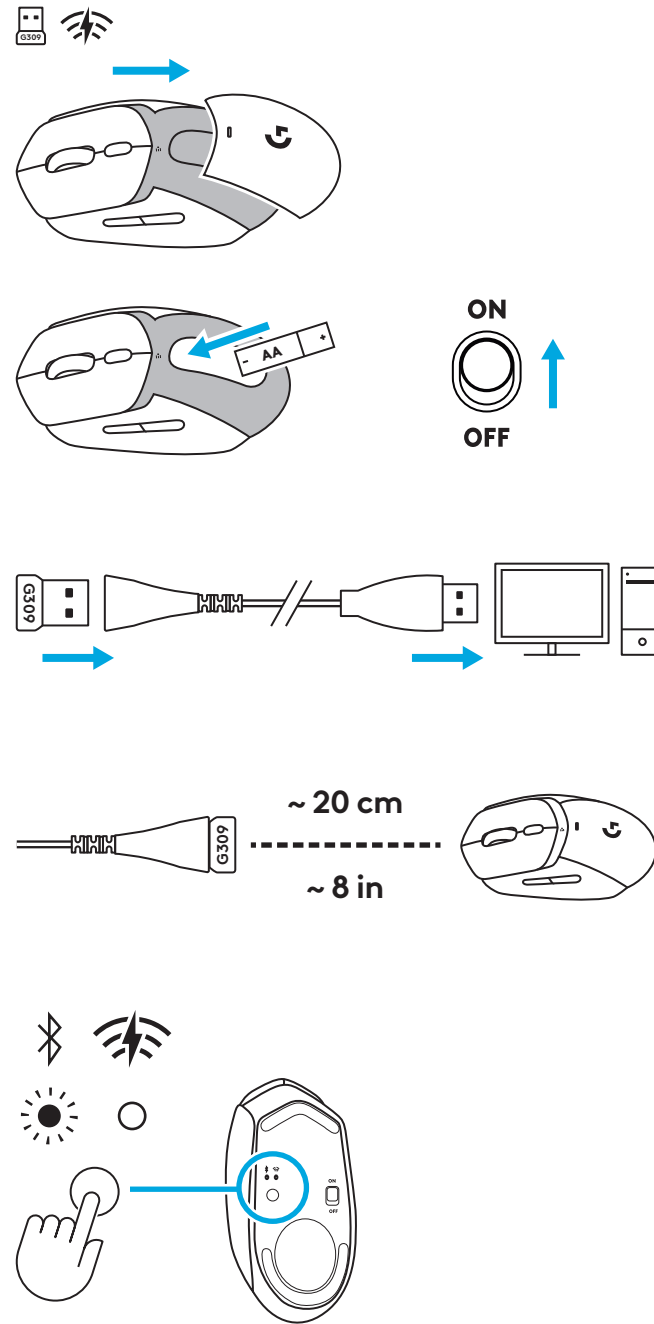
将握胶安装在主按键板上和鼠标两侧。



產品設定

LIGHTSPEED 連接 (附USB接收器)

- 打開電池蓋
- 插入 AA 電池
- 開啓 G309
- 將 LIGHTSPEED USB 接收器插入電腦。如果 G309 距離您的電腦超過 20 公分，請使用隨附的 USB 擴展器電纜。
- 可選：如果您的 G309 處於藍牙模式，請短按一次按鈕進入 LIGHTSPEED 模式。



連線

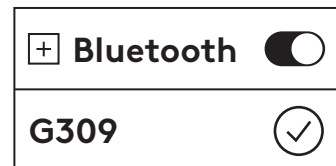
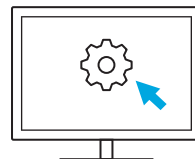
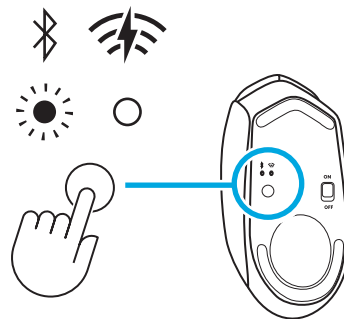
藍牙首次連接

- 開啓 G309。
- 按一下按鈕啓動藍牙連接。
- 回到配對裝置上的藍牙設定選擇G309。



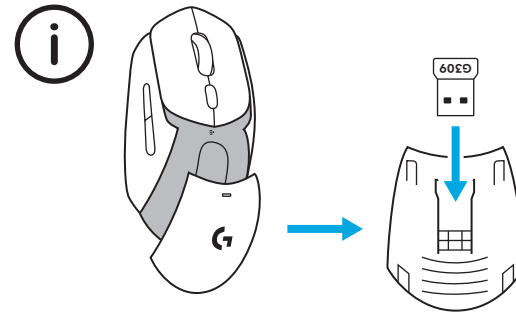
更改主機

- 開啓 G309。
- 如果尚未處於藍牙模式，則按下按鈕可循環連接到藍牙。
- 長按按鈕開始藍牙配對。
- 回到配對裝置上的藍牙設定選擇G309。



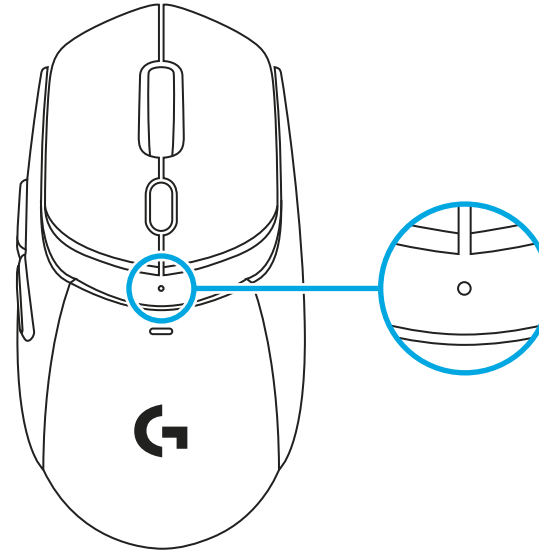
接收器收納槽

LIGHTSPEED USB 接收器可以存放在可拆卸電池蓋中。



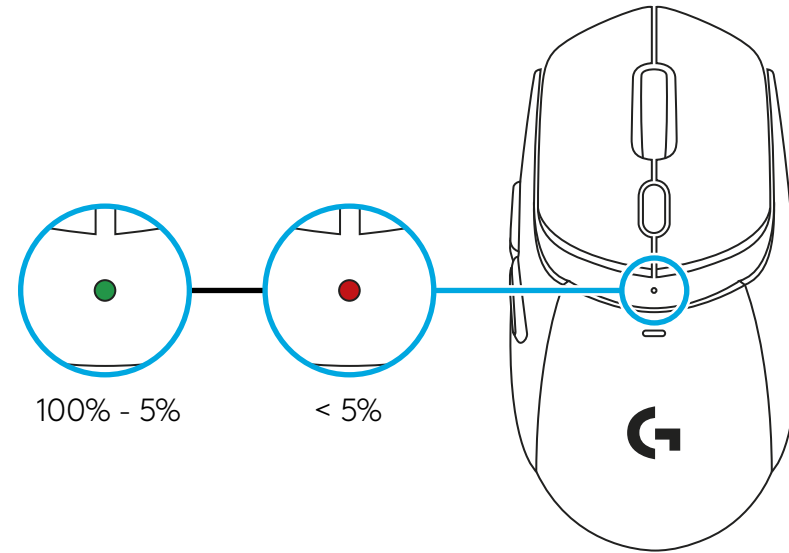
LED 功能

- 功能性 LED 指示燈位於滑鼠頂部。



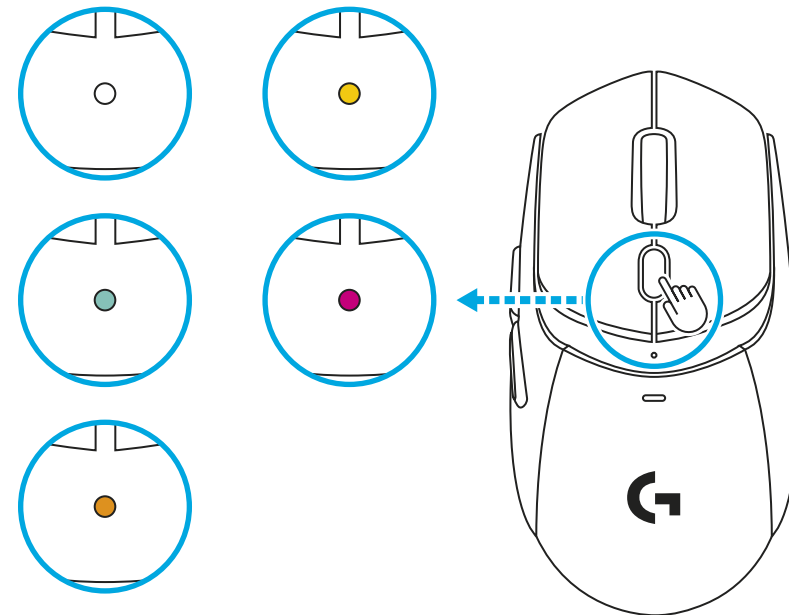
喚醒產品、處於睡眠模式和開啓裝置時會顯示電池狀態。

- 綠色顯示從 100% 到 5% 的電池狀態
- 紅色常亮，紅色呼吸顯示電池狀態：5%



在靈敏度 (DPI) 設定之間循環

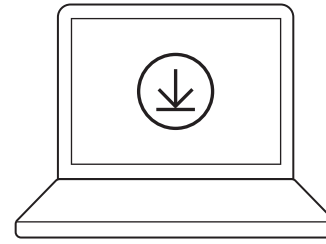
- 按下滾輪下方的按鈕，可進行不同的設定 (開箱即用或透過 G HUB 進行自訂後)。
- LED 上顯示不同顏色如下：
 - 1: 白色為 400 DPI
 - 2: 橙色為 800 DPI
 - 3: 藍綠色為 1200 DPI
 - 4: 黃色為 1600 DPI
 - 5: 洋紅色為 2400 DPI



G HUB 軟體

下載 G HUB 的連結

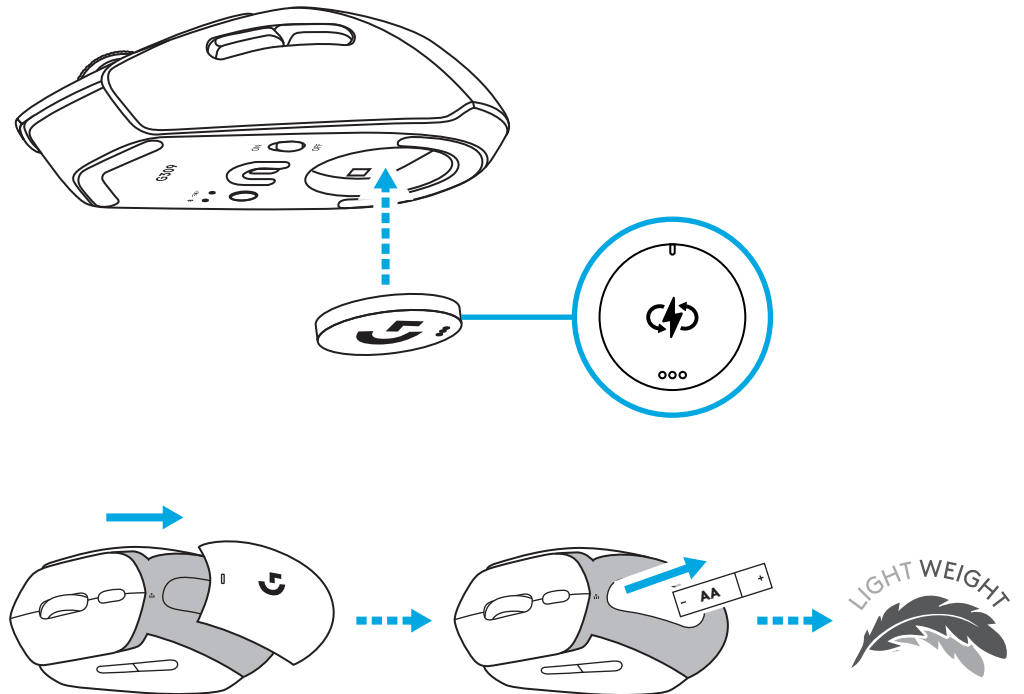
相容於：Windows 10 或更高版本、 macOS 12 或更高版本。



logitechG.com/ghub

G309 配備 POWERPLAY

- 1 從 G309 底部取下磁性塑膠盤。
- 2 將 POWERCORE 磁性塑膠盤 (POWERPLAY 附帶) 透過磁性吸附到 G309 的底部。
- 3 按照 **POWERPLAY 快速入門指南** 的說明進行操作
- 4 從裝置中取出 AA 電池，即可獲得輕量體驗，或保留電池 (與 POWERPLAY 配對時 從裝置中取出 AA 電池，可實現 68 公克的輕盈重量)。



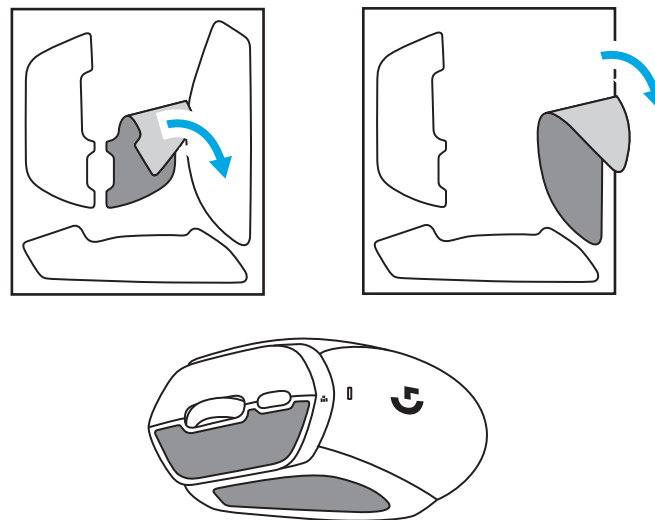
5 當裝置中沒有 AA 電池時：

- 滑鼠置於POWERPLAY上即可立即使用。
- 超級電容器充滿電最多可能需要 2 分鐘。
- 如果將 G309 從 POWERPLAY 中移除，滑鼠將可以使用幾分鐘。

握把膠帶

用布清潔滑鼠表面。

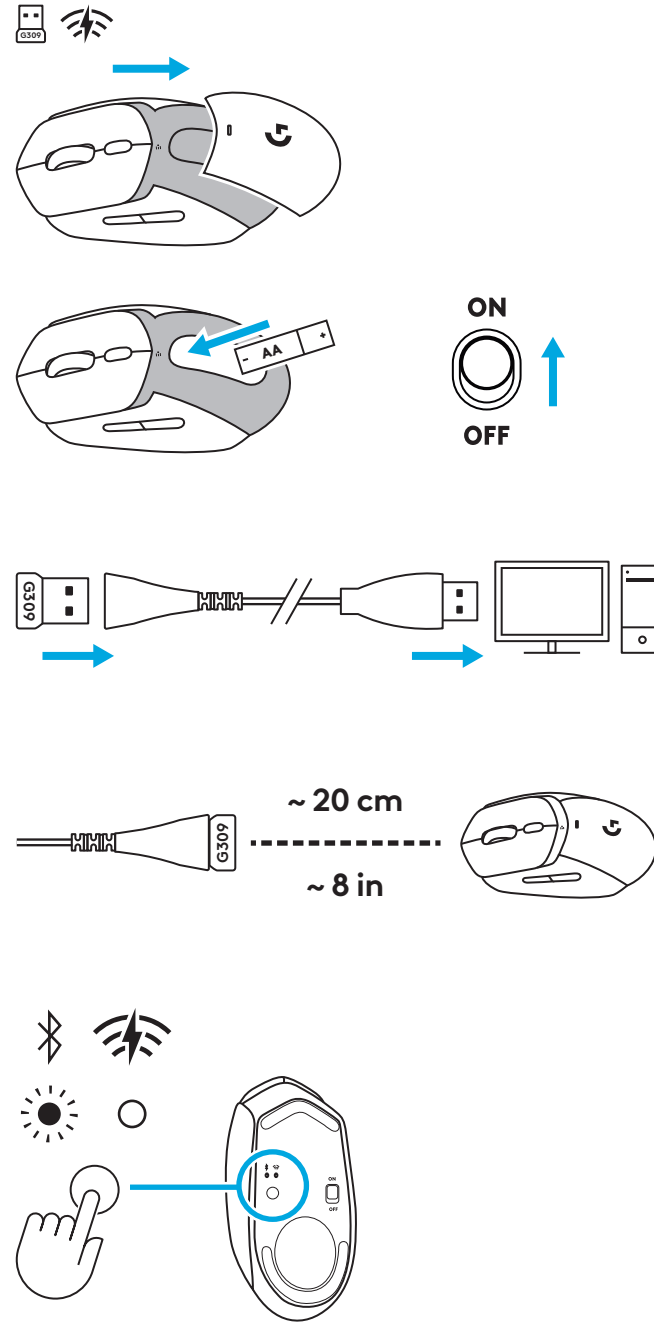
將握把膠帶貼在主按鍵上和滑鼠側面。



제품 설정

LIGHTSPEED 연결 (USB 수신기 이용 시)

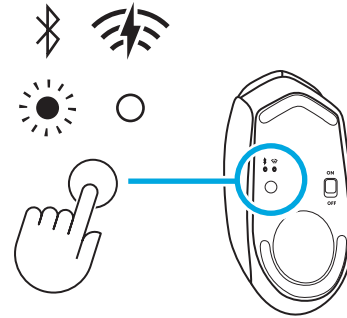
- 배터리 덮개를 제거합니다.
- AA 배터리를 삽입합니다.
- G309의 전원을 켭니다.
- LIGHTSPEED USB 수신기를 컴퓨터에 삽입합니다. G309가 컴퓨터에서 20cm 이상 떨어져 있는 경우 동봉된 USB 연장 케이블을 사용하세요.
- 선택 사항: G309가 Bluetooth® 모드에 있는 경우 버튼을 한 번 짧게 눌러 LIGHTSPEED 모드로 전환합니다.



연결

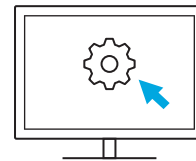
Bluetooth® 최초 연결

- G309의 전원을 켭니다.
- 버튼을 한 번 눌러 Bluetooth® 연결로 전환합니다.
- 호스트 장치의 Bluetooth® 설정으로 이동하여 G309에 연결합니다.



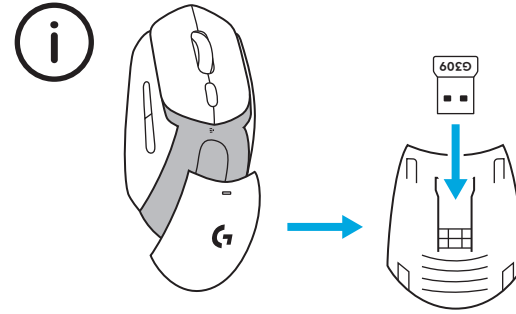
호스트 변경

- G309의 전원을 켭니다.
- 아직 Bluetooth® 모드에 있지 않은 경우 버튼을 한 번 눌러 Bluetooth® 연결로 전환합니다.
- 버튼을 길게 눌러 Bluetooth® 페어링을 시작합니다.
- 호스트 장치의 Bluetooth® 설정으로 이동하여 G309에 연결합니다.



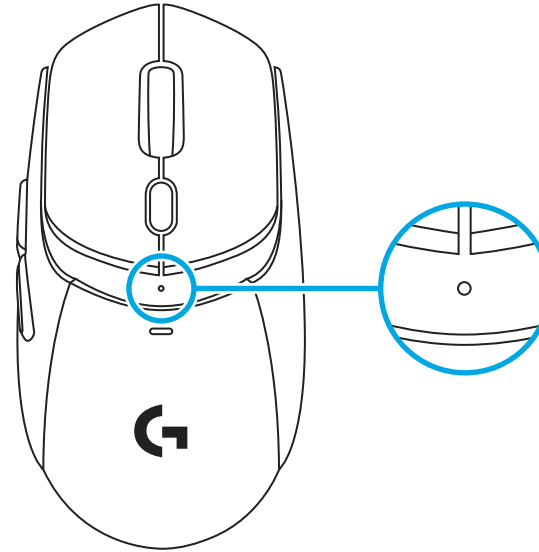
수신기 보관

LIGHTSPEED USB 수신기는 탈착식 배터리 덮개에 보관할 수 있습니다.



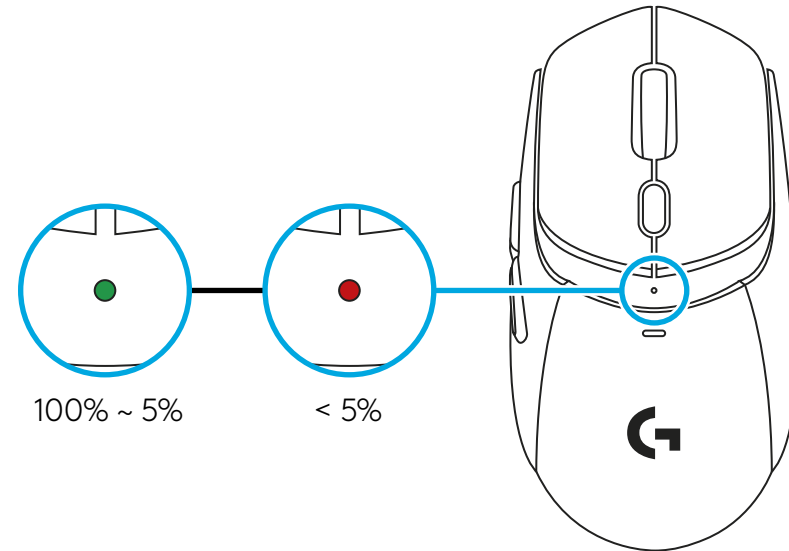
LED 기능

- 기능 LED 표시등은 마우스 상단에 있습니다.



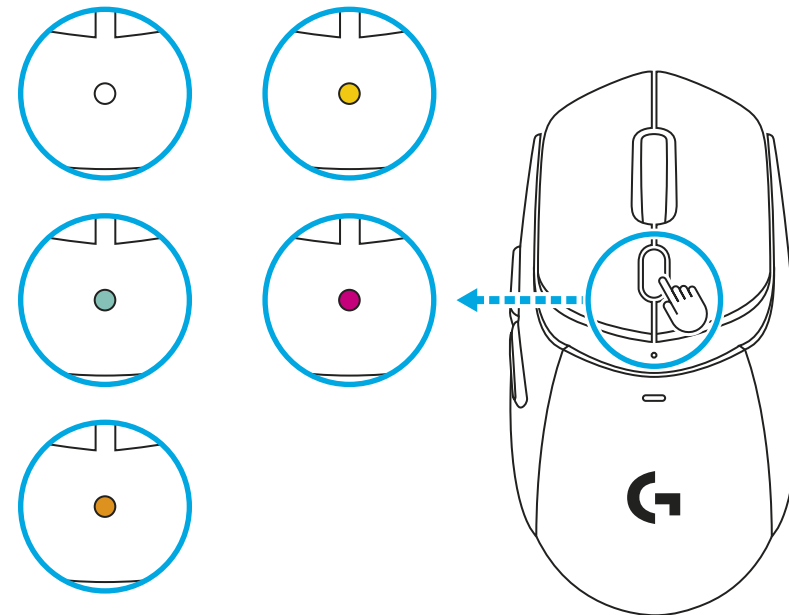
제품을 절전 모드에서 깨울 때와 장치를 켤 때 배터리 상태가 표시됩니다.

- **녹색**은 배터리 상태가 100~5%일 때 표시됩니다.
- **빨간색**이 계속 유지되거나 **빨간색**이 천천히 깜박이는 것은 배터리 상태가 5%미만일 때 표시됩니다.



민감도(DPI) 설정 전환

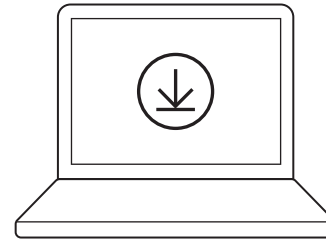
- 휠 아래의 버튼을 누르면 설정을 변경할 수 있습니다(초기 상태 또는 G HUB를 통해 커스텀한 후).
- LED에 표시되는 색상은 다음과 같습니다.
 - 1: 흰색은 400 DPI
 - 2: **주황색**은 800 DPI
 - 3: **청록색**은 1200 DPI
 - 4: **노란색**은 1600 DPI
 - 5: **핑크색**은 2400 DPI



G HUB 소프트웨어

G HUB 다운로드 링크는 오른쪽을 확인하세요.

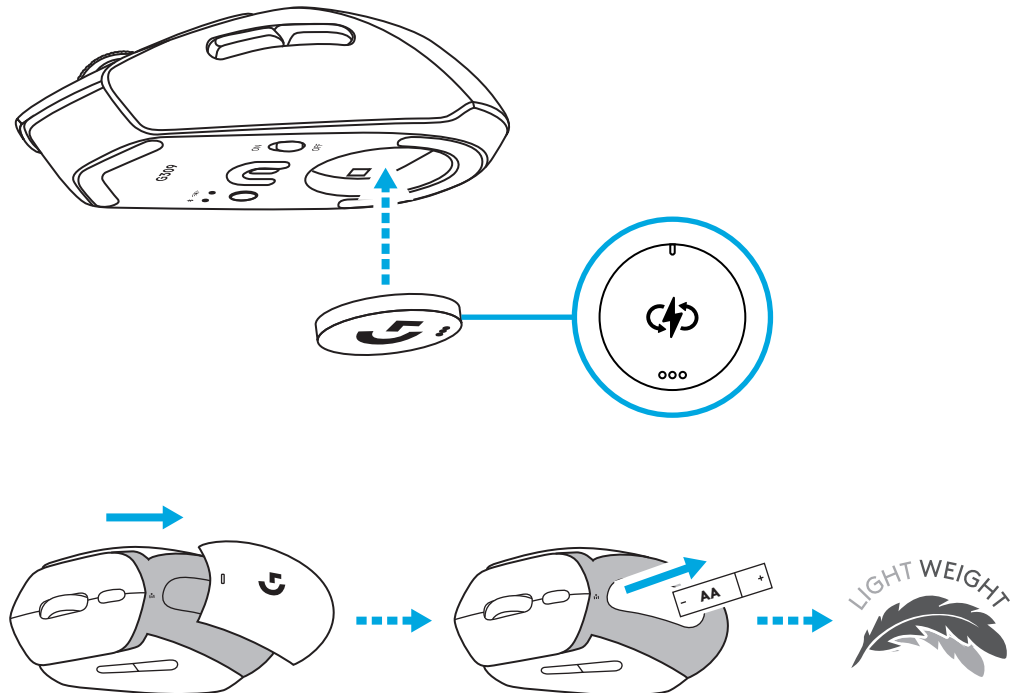
호환: Windows 10 이상, macOS 12 이상



logitechG.com/ghub

G309를 POWERPLAY와 함께 이용 시

- 1 G309 하단에서 마그네틱 플라스틱 디스크를 제거합니다.
- 2 POWERCORE 모듈(POWERPLAY에 포함)을 G309 하단에 부착합니다.
- 3 POWERPLAY 빠른 시작 가이드의 지침을 따릅니다.
- 4 가벼운 사용감을 위해 마우스에서 AA 배터리를 제거하거나 배터리를 그대로 사용할 수 있습니다 (POWERPLAY로 페어링된 상태에서 AA 배터리를 제거하면 68g의 가벼운 무게로 사용 가능).

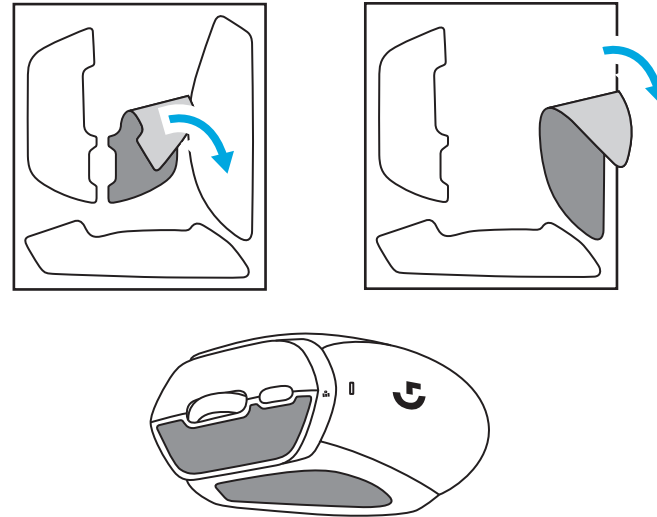


- 5** 마우스에 AA 배터리가 없는 경우:
- 마우스를 POWERPLAY에 올리면 즉시 작동합니다.
 - 슈퍼 커패시터를 완전히 충전하는 데 최대 2분이 소요될 수 있습니다.
 - G309를 POWERPLAY에서 제거해도 마우스가 몇 분 동안 작동합니다.

그립 테이프

천으로 마우스 표면을 닦습니다.

좌 클릭 버튼과 마우스 측면에 그립 테이프를 부착합니다.





©2024 Logitech. Logitech, Logitech G, Logi and their respective logos are trademarks or registered trademarks of Logitech Europe S.A. and/or its affiliates in the U.S. and other countries. All other trademarks are the property of their respective owners. Logitech assumes no responsibility for any errors that may appear in this manual. Information contained herein is subject to change without notice.

版权所有 © 2024 罗技。罗技、罗技 G、Logitech、Logitech G、Logi 及其各自标志为罗技欧洲公司和/或其在美国及其他国家/地区附属公司的商标，并或已注册。所有其它商标均是其各自所有者的财产。罗技对于本手册中可能出现的任何错误不承担任何责任。本手册中包含的信息如有更改，恕不事先通知。本说明书内所使用的数据如无特别说明均来自罗技有限公司和/或其关联公司和/或其指定的供应商。图片仅作说明之用，可能与实物有所差别。

WEB-621-002379 002