



DATA SHEET

ROOM SOLUTION: RALLY BAR HUDDLE + TAP IP

START MEETINGS WITH THE TOUCH OF A BUTTON. THIS COMPLETE ROOM SOLUTION FROM LOGITECH FEATURES A TOUCH CONTROLLER AND ALL-IN-ONE VIDEO BAR.

ALL-IN-ONE APPLIANCE SOLUTION FOR HUDDLE ROOMS AND SMALL SPACES

Designed to deliver video meetings with ease, the Rally Bar Huddle + Tap IP solution is quick to set up, simple to manage, and easy to integrate through CollabOS.

Rally Bar Huddle works with whatever video software platform you use to connect hybrid teams, ensuring an effortless experience from the home to the office, and everywhere in between.

With Rally Bar Huddle and Tap IP, it's easy to schedule, join, and participate in video meetings.

PRODUCT FEATURES



PREMIER ALL-IN-ONE VIDEO BAR FOR HUDDLE ROOMS AND SMALL SPACES

Quick and easy setup and management with this Logitech all-in-one video bar for huddle rooms and small spaces. Built-in AI enables RightSight, Grid View, Speaker View, and more. And it includes the same room filling audio as Rally Bar and Rally Bar Mini.

CLEAN AND SECURE CABLING

Route cables from above or below: thoughtful cable management hides cable clutter and keeps connections tight. This minimizes visible cabling, prevents downtime due to accidental disconnections, and supports mounting positions above and below the display.

MULTIPLE MOUNTING OPTIONS

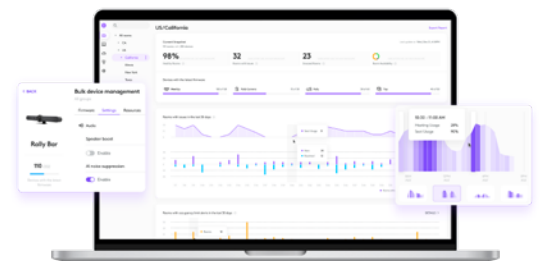
One mount, three different ways. Attach Rally Bar Huddle to a display, table, or wall to get the most out of your huddle rooms and small spaces.

START MEETINGS WITH A TAP

Meetings start with just one touch with Tap IP, a network-connected touch controller that's easy to use and simple to set up.

MANAGEMENT AND INSIGHTS

Monitor, manage, and get business insights into how your rooms are being used with Logitech Sync.



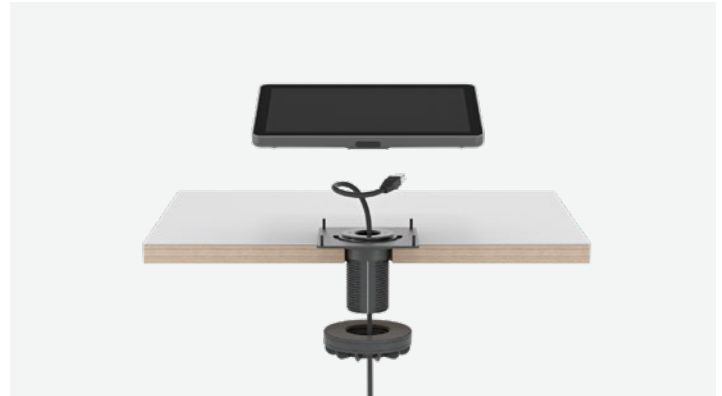
ACCESSORIES & TECH SPECS

RECOMMENDED ACCESSORIES



Tap Scheduler

Purpose-built scheduling panel for meeting rooms.



Tap Table Mount

Swiveling table mount with cable management.



Scribe

Effortlessly share whiteboards into video meetings with Logitech Scribe, an AI-powered whiteboard camera



Swytch

Connect a laptop to a room system's AV equipment for use with any video meeting or webinar.

TECH SPECS

| TAP IP - GENERAL | RIGHTSENSE TECHNOLOGIES |
|--|--|
| <p>Touch Screen: 257 mm (10.1 in) diagonal screen with 14° display angle</p> <p>Resolution: 1280 x 800</p> <p>Cabling: Power over Ethernet (PoE) cable (not included), IEEE 802.3af Type 1, Class 3 device</p> <p>Cable Management: Internal cable retention and strain relief system</p> <p>Ethernet: 10/100mbps</p> <p>Wi-Fi: 802.11a/b/g/n/ac</p> <p>Device Management: Logitech Sync</p> <p>Color: Graphite</p> <p>Mounting: 100 mm x 100 mm VESA FDMI</p> <p>Dimensions (H x W x D): 58 mm (2.3 in) x 244 mm (9.6 in) x 179 mm (7.0 in)</p> | <p>RightLight: Renders natural skin tones for each participant.</p> <p>RightSight: Maintains persistent room awareness and detects human figures to auto-frame participants.</p> <p>RightSound: Distinguishes speech from other sounds to auto-level voices while suppressing background noise and echo.</p> |

PRODUCT SPECS & LINKS

| GENERAL SPECIFICATIONS | MICROPHONES | DIMENSIONS | |
|---|---|--|---|
| <p>Built-in Components: 6 DMIC microphone array, digital PTZ camera, 1 full range ported speaker, cable management & retention system, multi functional mount, integrated motorized privacy shutter, Logitech CollabOS platform</p> <p>Enclosure: All-in-one enclosure with field replaceable front cover</p> <p>Device Management: Logitech Sync</p> <p>Displays Supported: 1 (2nd display support is coming soon)</p> <p>Display Resolution: Up to 1080p</p> <p>Network Protocol Support: IPv4, IPv6</p> <p>Proxy Support: IP based Proxy, FQDN based Proxy, Proxy using PAC file</p> | <p>Frequency Response: 90Hz – 16kHz</p> <p>Sensitivity: -36dBFS +/- 1 dB @ 1Pa</p> <p>Microphone data rate output: 48 kHz</p> <p>Pickup Range: Up to 23 ft (7m)</p> <p>Beamforming Elements: Six omnidirectional digital MEMS microphones forming five adaptive acoustic broadside beams</p> <p>Audio processing: AEC (Acoustic Echo Cancellation), VAD (Voice Activity Detector)</p> <p>Noise suppression: AI based de-noising algorithm</p> | <p>Width: 549.6 mm (21.6 in)</p> <p>Height: 78.9 mm (3.1 in)</p> <p>Depth: 76.0 mm (3.0 in)</p> <p>Weight: 3.9 lbs (1.8 kg)</p> | |
| | | SYSTEM REQUIREMENTS | |
| | | <p>Internet Connection: Wired or wireless</p> <p>USB Mode: Windows® 11, Windows 10, the two most recent versions of macOS</p> <p>Appliance Mode: Room solution software license (not included)</p> | |
| SPEAKERS | CAMERA | PACKAGE CONTENTS | |
| <p>Driver: 55 mm with bass reflex enclosure and patented suspension design</p> <p>Sensitivity: 83 dB SPL @1W +/-2dB t 1 meter</p> <p>Rated Power: 8WTHD: 1kHz <2% at 1W</p> <p>Speaker Sampling Rate: 48KHz</p> <p>Impedance: 4 Ohms</p> | <p>Digital Pan: ±48° at 4x zoom</p> <p>Digital Tilt: ±32° at 4x zoom</p> <p>Zoom: 4X HD digital zoom</p> <p>Diagonal Field of View: 120°</p> <p>Horizontal Field of View: 113°</p> <p>Vertical Field of View: 80°</p> | <p>Rally Bar Huddle</p> <p>Rally Bar Huddle</p> <p>Multi-Mount</p> <p>Power supply</p> <p>AC power cord</p> <p>HDMI cable</p> <p>USB cable</p> | <p>Tap IP</p> <p>Logitech Tap IP touch controller</p> <p>VESA mounting screws (4)</p> <p>Microfiber Cloth</p> <p>Documentation</p> |
| POWER & CABLES | CERTIFICATIONS AND COMPATIBILITY | WARRANTY INFORMATION | |
| <p>Power supply: Auto-sensing</p> <p>Operating Voltage/Power: 100-240V, 19V, 2.1A</p> <p>Power Supply Dimensions: 4.48 in (114 mm) x 1.85 in (47 mm) x 1.27 in (32.3 mm)</p> <p>DC Cable: 5 ft (1.5 m)</p> <p>AC Cable: 4.9 ft (1 m)</p> <p>HDMI 1.4 Cable: 6.5 ft (2 m)</p> <p>USB A to USB C 3.0 Cable: 7.2 ft (2.2 m)</p> | <p>Certifications:</p> <p>Certified for Zoom Rooms</p> <p>Works with Microsoft Teams</p> <p>Appliance Mode:</p> <p>Microsoft Teams</p> <p>Zoom Rooms</p> <p>USB Mode:</p> <p>Microsoft Teams</p> <p>Zoom Rooms</p> <p>Google Meet</p> <p>For more information, see support.</p> | <p>Standard: 2-year limited hardware warranty included.</p> <p>Extended: Additional one-year and three-year extended warranties available at the time of hardware purchase.</p> <p>Contact your reseller for availability.</p> | |
| | | ENVIRONMENTAL | |
| | | <p>Operating Temperature: 0 to 40°C</p> <p>Storage Temperature: -25 to 70°C</p> <p>Humidity: 10 to 90%</p> | |
| INTERFACES | SECURITY | ACCESSORIES | |
| <p>HDMI Out: 1</p> <p>HDMI In: 1</p> <p>USB: 1x Type A, 1x Type C</p> <p>Network: 10/100/1G Ethernet</p> <p>WiFi: 802.11a/b/g/n/ac</p> | <p>Full Disk Encryption:</p> <p>Data Encryption:</p> <p>Device Identity:</p> <p>Device Access:</p> <p>Key Protection:</p> | <p>Covers: Rally Bar Huddle Front Cover-Cleanable, Off-White Fabric</p> <p>Mounts: Wall Mount for Video Bars, TV Mount for Video Bars</p> <p>Touch Controller: Logitech Tap and Tap IP</p> | |
| | | PART NUMBER | |
| | | 991-000479 | |



Contact your reseller
or contact us at
www.logitech.com/business

Logitech Americas
3930 North First St
San Jose, CA 95134 USA

Logitech Europe S.A.
EPFL - Quartier de l'Innovation
Daniel Borel Innovation Center
CH - 1015 Lausanne

Logitech Asia Pacific Ltd.
Tel : 852-2821-5900
Fax : 852-2520-2230

© 2023 Logitech. Logitech, the Logitech logo and other Logitech marks are owned by Logitech and may be registered. All other trademarks are the properties of their respective owners. Logitech assumes no responsibility for any errors that may appear in this publication. Product, pricing and feature information contained herein is subject to change without notice.

Published July 2023